



Introduction to medium-density housing

This section provides a starting point for developers, builders and project managers who are interested in getting involved with medium-density housing (MDH). It sets out some of the issues you will need to consider when planning an MDH project, identifies the key specialists you'll need to work with to ensure compliance with the Building Code, and provides several case studies.

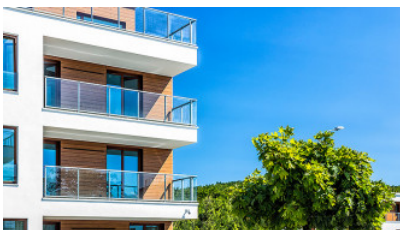
Getting started



The basics

ARTICLE

Get to grips with some of the things you'll need to consider before carrying out an MDH project.



The higher-density eight (HD8)

ARTICLE

Read about the Building Code clauses being prioritised for change to facilitate higher-density housing.



Specialist roles for medium-density housing projects

ARTICLE

An overview of the specialist roles commonly involved with MDH projects and their typical responsibilities.

Case studies

The following case studies illustrate how the various specialist roles can work together during the development of an MDH project to ensure compliance with the Building Code. Each case study focuses on one of the three main categories within the BRANZ Ltd definition of MDH:

- 1–2-storey attached houses (e.g. duplexes, triplexes, semi-attached terraced houses)
- 2–4-storey attached houses (terraced houses)
- 3–6-storey apartments

These case studies are designed to highlight some of the key issues that will need to be considered during the design process to ensure compliance with the Building Code. They are not intended to provide comprehensive guidance on all Building Code requirements.



Case study one: 1–2-storey attached houses

ARTICLE

A simple medium-density housing project to maximise the potential of an 850m² section.



Case study two: 2–4-storey attached houses

ARTICLE

A moderately complex medium-density housing project to construct 10 two-storey apartments on a small site.



Case study three: 3–6-storey apartments

ARTICLE

A complex medium-density housing project to deliver a six-storey apartment block within the inner city.



New Zealand Government