

# PRODUCT CERTIFICATE

## wedi Bathroom Waterproofing System

### 1 CERTIFICATE HOLDER DETAILS

wedi Australia Pty Ltd

100 Harris Street, Level 3  
Pyrmont, NSW 2009, Australia

[www.wedi.com.au](http://www.wedi.com.au)  
[peter.beckmann@wedi.com.au](mailto:peter.beckmann@wedi.com.au)  
+61 437 678 459



### 2 PRODUCT CERTIFICATION BODY



SAI Global Certification Services Pty Limited

(ACN 108 716 669) Trading as "SAI Global"

JAS-ANZ Accreditation No. Z1440295AS

680 George St, Sydney, NSW 2000

[www.saiglobal.com](http://www.saiglobal.com)

### KEY INFORMATION

#### 3 SUMMARY OF DESCRIPTION OF BUILDING METHOD OR PRODUCT

The wedi Bathroom Waterproofing System consist of wall and floor boards. The boards have a blue core made from rigid extruded polystyrene (XPS closed cell) foam and are finished with fiberglass mesh on both sides and coated with a polymer-modified cement as a bond surface for ceramic and stone tile adhesive.

*Continuation of description can be found in item 9. Supporting Information about Description of Building Product or Method.*

*Matters that should be taken into account in the use or application of the building method or product can be found in item 6. Conditions and Limitations of Use*

Catalogue or model identification numbers: Refer to item 9 for detailed identification information.

#### 4 SUMMARY OF INTENDED USE OF BUILDING METHOD OR PRODUCT

The wedi Bathroom Waterproofing System is intended for use in bathroom and laundry wet areas.

*Continuation of intended use can be found in item 10. Supporting Information about Intended use of Building Product or Method.*

#### 5 BUILDING CODE PROVISIONS – New Zealand Building Code (NZBC) as at 15 November 2021

**Clause B1 Structure** — B1.3.1; B1.3.2; B1.3.3(a, b, j); B1.3.4

**Clause B2 Durability** — B2.3.1(a); B2.3.2

**Clause C3 Fire affecting areas beyond the fire source** – C3.4(a)

**Clause E3 Internal Moisture** – E3.3.1; E3.3.6 (contributes to)

**Clause F2 Hazardous Building Materials** — F2.3.1

*If designed, used, installed & maintained in accordance with the scope of this Certificate, the above-mentioned product will meet the following provisions of the NZBC.*

*How the building method or product complies or contributes can be found in item 12. Basis for Certification.*

*Any qualifications on the extent of that compliance can be found in item 6. Conditions and limitations of use.*

### 6 CONDITIONS AND LIMITATIONS OF USE

- a) The wedi Bathroom Waterproofing System is certified for use in bathroom and laundry wet areas in all buildings except in importance level 4 buildings not protected with an automatic fire sprinkler system.
- b) The wedi Bathroom Waterproofing System must be installed in accordance with the manufacturer's installation instructions and technical datasheets as listed below in 'Reference Documents'.
- c) Where wedi Building board is fixed to a framed wall structure, all vertical edges must be fully supported, and the board thickness shall be at least:
  - i. 10mm for unsupported span up to 450mm, and
  - ii. 20mm for unsupported span up to 600mm.
- d) The wedi Bathroom Waterproofing System has not been assessed for use in saunas.

NOTE: Together, items 3, 4, 5 and 6 define scope of use.

#### Reference Documents:

- Building Boards TDS\_2021, Version 3, June 2021
- wedi ShowerSpa Technical Brochure\_2020, Version 3, September 2020.
- wedi ShowerSystem Brochure\_2021, Version 5, April 2021.
- wedi\_AU\_MA\_Prime\_2021\_rz\_SCREEN, Version 1, May 2021.
- wedi\_AU\_MA\_Ligno\_2021\_rz\_SCREEN, Version 1, May 2021.
- wedi\_AU\_MA\_Riolito-neo\_2021\_rz\_SCREEN, Version 1, May 2021.
- wedi SealingConcept Brochure\_2021, Version 1, May 2021.
- wedi-eu\_sa\_wedi-610\_v2-tools\_td\_tds\_screen\_210x297mm\_210520\_en, Version 1, May 2021.

### 7 HEALTH AND SAFETY INFORMATION

#### Reference Documents:

- wedi Building Panel Safety Data Sheet 10 October 2014 (Version 7) – No hazards to health identified for product installed.
- wedi Fundo Safety Data Sheet 10 October 2014 (Version 6) – No hazards to health identified for product installed.



CODEMARK™

# PRODUCT CERTIFICATE

## wedi Bathroom Waterproofing System

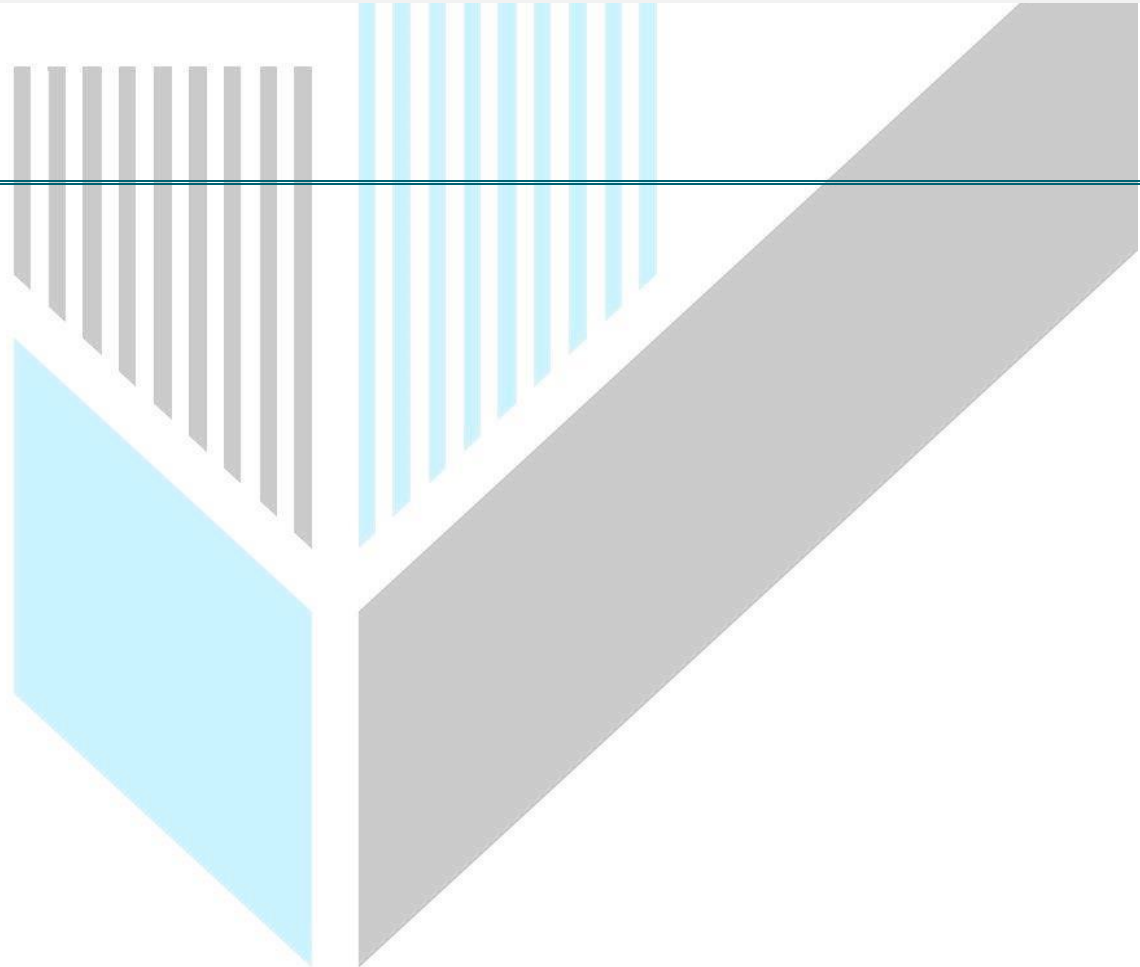


8

### SIGNATURES

Name and Signature of the Product Certification Body's (PCB) authorised representative and, where different, the person assigned by the PCB to make the certification decision

**President, Business Assurance  
SAI Global Assurance**



The certificate holder must maintain compliance with the conditions set out in section 15 of the Building (Product Certification) Regulations 2008.

This certificate is issued by SAI Global, an independent certification body accredited by the product certification accreditation body appointed by the Chief Executive of Ministry Business, Innovation and Employment (MBIE) under the Building Act 2004. MBIE does not in any way warrant, guarantee or represent that the building method or product, the subject of this certificate conforms with the New Zealand Building Code, nor accept any liability arising out of the use of the building method or product. MBIE disclaims to the extent permitted by law, all liability (including negligence) for claims of losses, expenses, damages, and costs arising as a result of the use of the building method(s) or product(s) referred to in this certificate.

This certificate may only be reproduced in its entirety. It is advised to check that this certificate is currently valid and not withdrawn or suspended by referring to the Register of Product Certificates on the Building Performance website <http://www.building.govt.nz>.

Information regarding SAI Global's complaints process can be found at the following link: [Complaints Process](#).

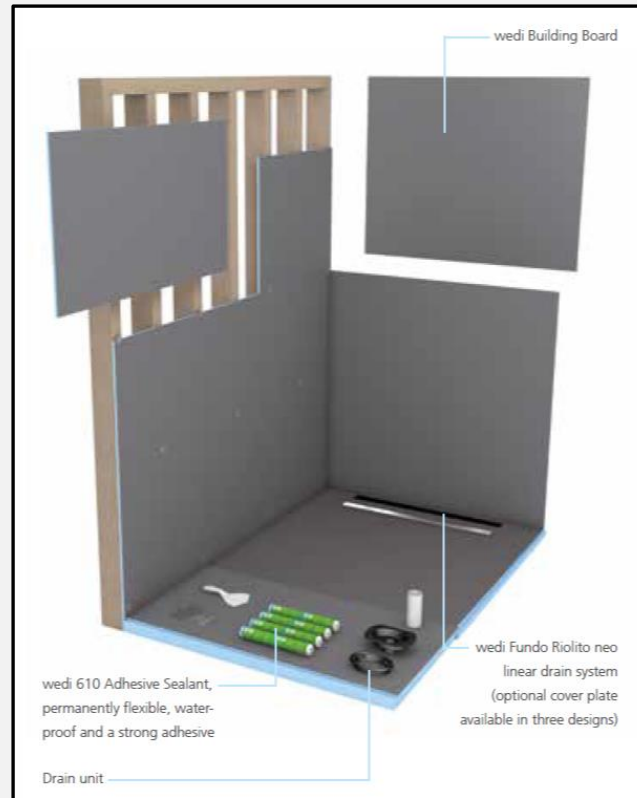
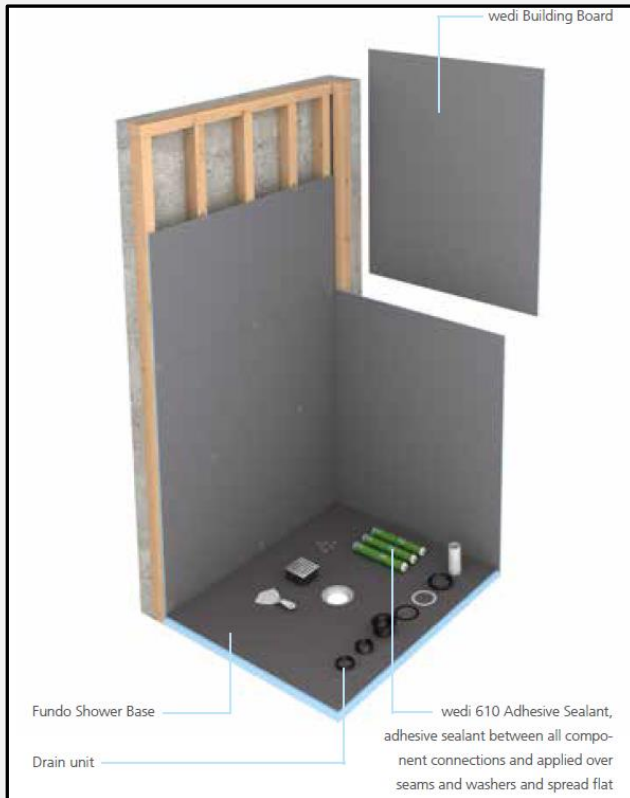
CERTIFICATE V1.2

### SCHEDULE: INFORMATION THAT SUPPORTS KEY INFORMATION

#### 9 SUPPORTING INFORMATION ABOUT DESCRIPTION

This certification covers the following wedi Building Board and wedi Fundo Shower Base systems:

- wedi Building Boards (for walls and floors).
- wedi Fundo Primo shower base.
- wedi Fundo Riolito neo / Riolito neo Modular shower base.
- wedi Fundo Ligno shower base.





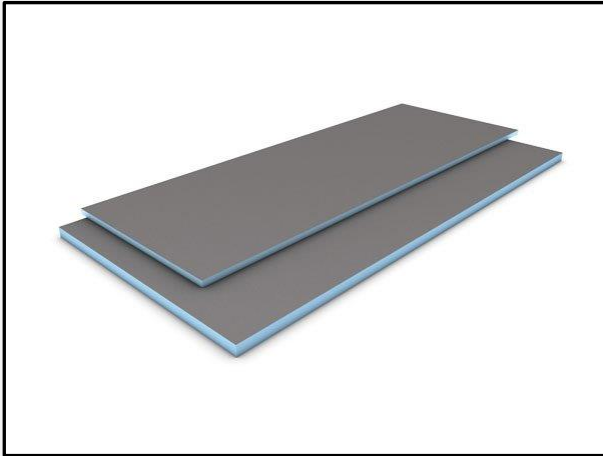
CODEMARK™

# PRODUCT CERTIFICATE

## wedi Bathroom Waterproofing System

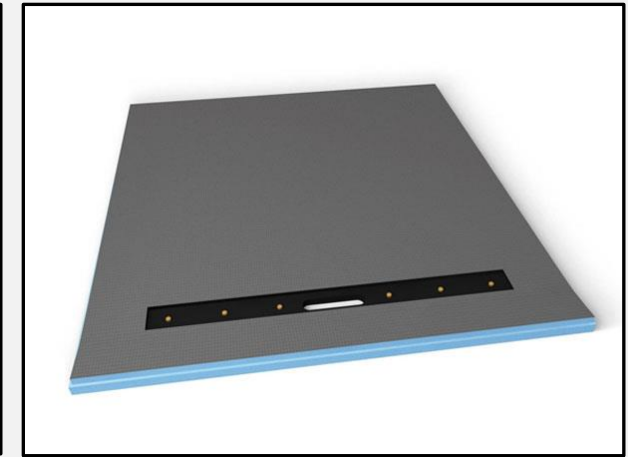
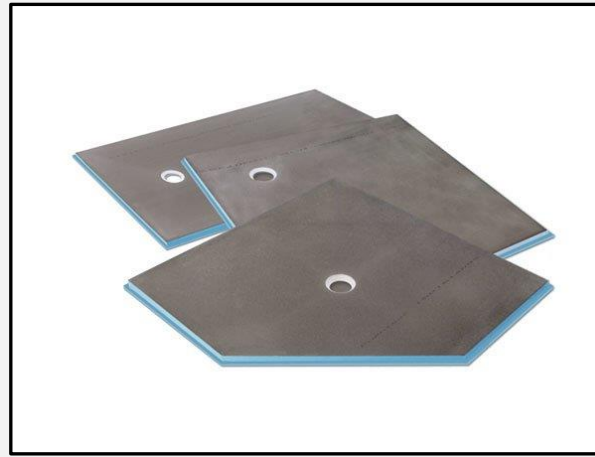
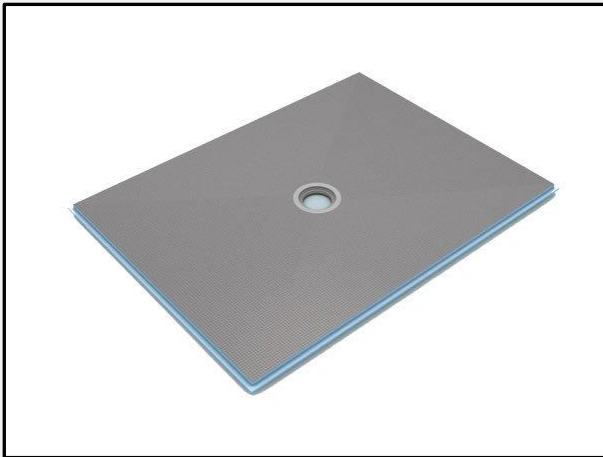


The wedi Building Boards comes in a range of sizes from 4mm to 50 mm thick, from 1250mm to 2500mm long, and from 600mm to 1200mm wide. For more information refer to 'Reference Documents' listed in item 6 above.



Size	Thickness
1250 x 600 mm	4 mm
1250 x 600 mm	6 mm
1524 x 914 mm	6 mm
2500 x 1200 mm	10 mm
2500 x 600 mm	20 mm
2500 x 600 mm	50 mm
2500 x 1200 mm	20 mm
2500 x 1200 mm	50 mm

The wedi Fundo Shower base system comes with either 4-way or 1-way pre-sloped shower base models. It is manufactured with a preformed centre, off-centre, or integrated linear channel drain. For more information refer to 'Reference Documents' listed in item 6 above.



The certificate holder must maintain compliance with the conditions set out in section 15 of the Building (Product Certification) Regulations 2008.

This certificate is issued by SAI Global, an independent certification body accredited by the product certification accreditation body appointed by the Chief Executive of Ministry Business, Innovation and Employment (MBIE) under the Building Act 2004. MBIE does not in any way warrant, guarantee or represent that the building method or product, the subject of this certificate conforms with the New Zealand Building Code, nor accept any liability arising out of the use of the building method or product. MBIE disclaims to the extent permitted by law, all liability (including negligence) for claims of losses, expenses, damages, and costs arising as a result of the use of the building method(s) or product(s) referred to in this certificate.

This certificate may only be reproduced in its entirety. It is advised to check that this certificate is currently valid and not withdrawn or suspended by referring to the Register of Product Certificates on the Building Performance website <http://www.building.govt.nz>.

Information regarding SAI Global's complaints process can be found at the following link: [Complaints Process](#).

CERTIFICATE V1.2



CODEMARK™

# PRODUCT CERTIFICATE

## wedi Bathroom Waterproofing System



### Fixing Components:

The fixing and installation components are detailed in the manufacturer's technical literature and products brochures and consist of:

- wedi 610 adhesive sealant.
- wedi self-adhesive reinforcing tape.
- Other fixing components comprise:
  - wedi screws and washers — used as a fixing anchor to walls and floors.
  - wedi dowel fixing — used to fix the board to uneven surfaces not sufficient to bond with adhesive or to supplement adhesive fixing.

### 10 SUPPORTING INFORMATION ABOUT INTENDED USE

- Refer above to item 4. *Summary of intended use of building method or product.*

### 11 SUPPORTING INFORMATION ABOUT CONDITIONS AND LIMITATIONS OF USE

Refer to Section 6 above and the following:

- Particular care and careful considerations are necessary when installing the panels in close proximity to hot water pipes and/or heat-producing appliances or devices to minimise the risk of damage to the panels owing to radiated, convected and/or conducted heat.

*All conditions and limitations are as stated above in item 6. Conditions and Limitations of Use*

### 12 BASIS FOR CERTIFICATION

1. **B1 Structure** – by testing and comparison with provisions of Verification Method B1/VM1 – assessment of dynamic soft body test assessed by Ian Bennie and Associates test reports no. 2018-043-s1 & 2018-043-s2 which establish resistance to point and impact loads; and static simulated distributed load strength assessed by James Cook University – Cyclone Testing Station report no. TS1088 which establishes load strength of shower base.
2. **B2 Durability** – by testing and comparison with provisions of Verification Method B2/VM1 – assessment by BBA that the products when installed in accordance with the manufacturer's instructions should have a life equal to that of the structure to which they are installed.
3. **C3 Fire affecting areas beyond the fire source** – by testing to ISO 5660 in accordance with Verification Method C/VM2 established by CURRANTA Test report No. R22-0063.
4. **E3 Internal moisture** – by testing and comparison with Acceptable Solution E3/AS1 – Resistance to the passage of water in wet areas, including showers, established by Ian Bennie and Associates test reports no.2018-043-s1, tests for compliance with IAPMO PS 46-10-Material and Property Standard for Field Fabricated Tiling Kits (QAI Laboratories test reports TJ1202-1 and TJ1202-2), and by assessments and certifications by BBA (BBA Agrément Certificate 00/3675), ETA (European Technical Approval ETA-13/0385) and ICC (ICC-ES Report PMG-1189).
5. **F2 Hazardous building materials** – by analysis and comparison with the Performance Requirements of F2.3.1 – safety datasheets for the system components identify no hazards to health identified for the installed components of the system.



The certificate holder must maintain compliance with the conditions set out in section 15 of the Building (Product Certification) Regulations 2008.

This certificate is issued by SAI Global, an independent certification body accredited by the product certification accreditation body appointed by the Chief Executive of Ministry Business, Innovation and Employment (MBIE) under the Building Act 2004. MBIE does not in any way warrant, guarantee or represent that the building method or product, the subject of this certificate conforms with the New Zealand Building Code, nor accept any liability arising out of the use of the building method or product. MBIE disclaims to the extent permitted by law, all liability (including negligence) for claims of losses, expenses, damages, and costs arising as a result of the use of the building method(s) or product(s) referred to in this certificate.

This certificate may only be reproduced in its entirety. It is advised to check that this certificate is currently valid and not withdrawn or suspended by referring to the Register of Product Certificates on the Building Performance website <http://www.building.govt.nz>.

Information regarding SAI Global's complaints process can be found at the following link: [Complaints Process](#).

CERTIFICATE V1.2



CODEMARK™

# PRODUCT CERTIFICATE

## wedi Bathroom Waterproofing System



13

### SUPPORTING DOCUMENTATION FOR CERTIFICATION

#### Acceptable Solutions and Verification Methods for New Zealand Building Code:

- **Clause B1 Structure** – B1/VM1 1<sup>st</sup> edition, Amendment 20 (29 November 2021).
- **Clause B2 Durability** – B2/VM1 2<sup>nd</sup> edition, Amendment 12 (28 November 2019).
- **Clause C3 Fire affecting areas beyond the source** – C/VM2, Amendment 6 (5 November 2020).
- **Clause E3 Internal Moisture** – E3/AS1 2<sup>nd</sup> edition, Amendment 7 (5 November 2020).
- **Clause F2 Hazardous building materials** – F2/VM1 1<sup>st</sup> edition, Amendment 3 (1 January 2017).

#### Test Reports

1. **James Cook University – Cyclone Testing Station, Static Simulated Distributed Load Strength testing of wedi Shower Base, Report No: TS1088.**  
*This report provides the results of testing a wedi pre-sloped shower base to the requirements of AS/NZS 1170.1:2002 for uniformly distributed loads and determined the product could withstand a load in excess of 5kPa. The level of resistance to concentrated loads will depend on the size and strength of the tiles used to cover the panels.*
2. **IAN BENNIE AND ASSOCIATES TEST REPORT No. 2018-043-S1**  
*This report provides the test results of wedi shower system sample comprising of a shower base and two corner walls (10mm thick) in accordance with IAMPO PS 106-2015 Section 5.1 for water penetration and determines that no cracks or damage were evident during the test, and no water leakage through the wall/floor joints were observed.*
3. **IAN BENNIE AND ASSOCIATES TEST REPORT No.2018-043-S2**  
*This report provides the results of testing a 10mm thick wedi board fixed to stud frame with intermediate nogging when tested in accordance with the impact sandbag drop test method outlined in NCC Volume 1 Spec C1.8 Paragraph 5(c) and determines there was no cracking or penetration.*
4. **BBA Agrément Certificate 00/3675 Wedi boards – 1 August 2014.**  
*An assessment by BBA that wedi Building Boards when installed in accordance with the manufacturer's instructions should have a life equal to that of the structure to which they are installed.*
5. **European Technical Approval ETA-13/0385 – 12 June 2013.**  
*Technical approval attesting that wedi kit for wet room floors and walls assessed to ETAG 022 Part 3 is water resistant.*
6. **QAI Laboratories test report TJ1202-1 – April 3, 2013.**  
*This evaluation of Wedi Corporation Fundo Shower Kit for compliance with IAPMO PS 46-10 (Material and Property Standard for Field Fabricated Tiling Kits) concludes that no water leakage was observed.*
7. **QAI Laboratories test report TJ1202-2 – April 3, 2013.**  
*This evaluation of Wedi Corporation Riolto Shower Kit for compliance with IAPMO PS 46-10 (Material and Property Standard for Field Fabricated Tiling Kits) concludes that no water leakage was observed.*
8. **ICC-ES Report PMG-1189 Wedi Fundo Shower system and tile backer board underlayments (May 2016).**  
*This evaluation by ICC confirms that the product complies with ICC plumbing and residential building codes and IAMPO PS 106-2015e1 for water penetration.*



The certificate holder must maintain compliance with the conditions set out in section 15 of the Building (Product Certification) Regulations 2008.

This certificate is issued by SAI Global, an independent certification body accredited by the product certification accreditation body appointed by the Chief Executive of Ministry Business, Innovation and Employment (MBIE) under the Building Act 2004. MBIE does not in any way warrant, guarantee or represent that the building method or product, the subject of this certificate conforms with the New Zealand Building Code, nor accept any liability arising out of the use of the building method or product. MBIE disclaims to the extent permitted by law, all liability (including negligence) for claims of losses, expenses, damages, and costs arising as a result of the use of the building method(s) or product(s) referred to in this certificate.

This certificate may only be reproduced in its entirety. It is advised to check that this certificate is currently valid and not withdrawn or suspended by referring to the Register of Product Certificates on the Building Performance website <http://www.building.govt.nz>.

Information regarding SAI Global's complaints process can be found at the following link: [Complaints Process](#).

CERTIFICATE V1.2



CODEMARK™

# PRODUCT CERTIFICATE

## wedi Bathroom Waterproofing System



**9. wedi Building Panel Safety Data Sheet 10 October 2014 (Version 7).**

*No hazards to health identified for product installed.*

**10. wedi Fundo Safety Data Sheet 10 October 2014 (Version 6).**

*No hazards to health identified for product installed.*

**11. CURRANTA Test report No. R22-0063 Test to ISO 5660-1:2015 + A1:2019 Reaction-to-fire tests – Heat release, smoke production and mass loss rate Part 1: Heat release rate (cone calorimeter method) and smoke production rate (dynamic measurement)**

*This report provides the test results of testing to ISO 5660-1.*

**12. CURRANTA Letter (8 April 2022)**

*This letter from the testing laboratory provides an opinion that the product meets the requirements for Material Group Number 1.*

### 14 CONDITIONS RELATING TO NOTIFICATION

(a) the certificate holder notifies the product certification body in writing of any intended change to any of the following particulars:

- (i) the name, address, or contact details of the certificate holder;
- (ii) any address of a location where a certified product is produced or manufactured;

(b) the certificate holder notifies the product certification body in writing of any intended change, modification, or alteration to any of the following:

- (i) the certified building method or product;
- (ii) the method of its production or manufacture;
- (iii) the product quality plan prepared in respect of the certified building method or product;
- (iv) the application or installation instructions for the certified building method or product;
- (v) any documentation relating to the use and maintenance of the certified building method or product;

(c) if the certificate holder has any reason to suspect that the certified building method or product does not comply with the Building Code, the certificate holder notifies the product certification body in writing of the reason for that suspicion:

(d) if the certificate holder or the product certification body finds that a certified building method or product that has been released on the market does not comply with the Building Code, the certificate holder discloses that fact in disclosure statements published in a form that is acceptable to the product certification body and to the chief executive:

(e) if the certificate is suspended or revoked, the certificate holder—

- (i) notifies all customers to whom the building method or product is regularly supplied; and
- (ii) immediately ceases using the certificate, the mark of conformity, and any reference to the number of the certificate.



The certificate holder must maintain compliance with the conditions set out in section 15 of the Building (Product Certification) Regulations 2008.

This certificate is issued by SAI Global, an independent certification body accredited by the product certification accreditation body appointed by the Chief Executive of Ministry Business, Innovation and Employment (MBIE) under the Building Act 2004. MBIE does not in any way warrant, guarantee or represent that the building method or product, the subject of this certificate conforms with the New Zealand Building Code, nor accept any liability arising out of the use of the building method or product. MBIE disclaims to the extent permitted by law, all liability (including negligence) for claims of losses, expenses, damages, and costs arising as a result of the use of the building method(s) or product(s) referred to in this certificate.

This certificate may only be reproduced in its entirety. It is advised to check that this certificate is currently valid and not withdrawn or suspended by referring to the Register of Product Certificates on the Building Performance website <http://www.building.govt.nz>.

Information regarding SAI Global's complaints process can be found at the following link: [Complaints Process](#).

CERTIFICATE V1.2