



Dear Customer

Please find attached the July 2014 amendment to C/AS5 Acceptable Solution for Buildings used for Business, Commercial and Low Level Storage (Risk Group WB), published by the Ministry of Business, Innovation and Employment. The Ministry of Business, Innovation and Employment combines the former Department of Building and Housing, Department of Labour, Ministry of Economic Development and Ministry of Science and Innovation.

To update your printed copy of C/AS5, please make the following changes:

| Section | Previous version | July 2014 amendment |
|--|----------------------------------|--|
| C/AS5 Acceptable Solution for Buildings used for Business, Commercial and Low Level Storage (Risk Group WB) | | |
| Title pages | Remove document history/status | Replace with new document history/status |
| References | Remove page 7/8 | Replace with new page 7/8 |
| Definitions | Remove pages 9/10, 13–16 | Replace with new pages 9/10, 13–16 |
| C/AS5 Part 1 | Remove pages 19–22 | Replace with new pages 19–22 |
| C/AS5 Part 2 | Remove pages 25–30 | Replace with new pages 25–30 |
| C/AS5 Part 3 | Remove pages 35–38, 45–56 | Replace with new pages 35–38, 45–56 |
| C/AS5 Part 4 | Remove pages 69/70, 73/74, 79–84 | Replace with new pages 69/70, 73/74, 79–84 |
| C/AS5 Part 5 | Remove pages 85/86, 91–94 | Replace with new pages 85/86, 91–94 |
| Appendices | Remove pages 111–114 | Replace with new pages 111–114 |
| Index | Remove page 115/116 | Replace with new page 115/116 |



MINISTRY OF BUSINESS,
INNOVATION & EMPLOYMENT
HĪKINA WHAKATUTUKI

C/AS5

Acceptable Solution for Buildings used for Business, Commercial and Low Level Storage (Risk Group WB)

For New Zealand Building Code Clauses
C1-C6 Protection from Fire



Using this Acceptable Solution

The Ministry of Business, Innovation and Employment may amend parts of this Acceptable Solution at any time. People using this Acceptable Solution should check on a regular basis whether new versions have been published. The current version can be downloaded from www.dbh.govt.nz/compliance-documents

Users should make themselves familiar with the preface to the New Zealand Building Code Handbook, which describes the status of Acceptable Solutions and explains other ways of achieving compliance.

Defined words (italicised in the text) are explained in the Building Code Clause A2 and in the Definitions section of this Acceptable Solution. Classified uses of buildings are explained in the Building Code Clause A1.

Enquiries about the content of this document should be directed to:



**MINISTRY OF BUSINESS,
INNOVATION & EMPLOYMENT**
HĪKINA WHAKATUTUKI

The Ministry of Business, Innovation and Employment
PO Box 10-729, Wellington.
Telephone 0800 242 243
Fax 04 494 0290
Email: info@dbh.govt.nz

ISBN: 978-0-478-38176-4 (print)
ISBN: 978-0-478-38177-1 (electronic)

**Acceptable Solutions and Verification Methods are available
from www.dbh.govt.nz/compliance-documents**

New Zealand Government

© Ministry of Business, Innovation and Employment 2014

This document is protected by Crown copyright, unless indicated otherwise. The Ministry of Business, Innovation and Employment administers the copyright in this document. You may use and reproduce this document for your personal use or for the purposes of your business provided you reproduce the document accurately and not in an inappropriate or misleading context. You may not distribute this document to others or reproduce it for sale or profit.

The Ministry of Business, Innovation and Employment owns or has licences to use all images and trademarks in this document. You must not use or reproduce images and trademarks featured in this document for any purpose (except as part of an accurate reproduction of this document) unless you first obtain the written permission of the Ministry of Business, Innovation and Employment.

Status of C/AS5

This Acceptable Solution C/AS5, for buildings used for business, commercial and low level storage (Risk Group WB), provides a means of compliance with the New Zealand Building Code Clauses C1-C6 Protection from Fire. It is issued under section 22 of the Building Act 2004 as an Acceptable Solution.

This Acceptable Solution is one way that can be used to show compliance with the New Zealand Building Code Clauses C1-C6 Protection from Fire. Other ways of complying with the Building Code are described, in general terms, in the preface of the New Zealand Building Code Handbook.

When can you use C/AS5

This Acceptable Solution is effective from 1 July 2014. It can be used to show compliance with the Building Code Clauses C1-C6 Protection from Fire. It does not apply to building consent applications submitted before 1 July 2014.

The previous version, Amendment 2, of this Acceptable Solution can be used to show compliance with the Building Code Clauses C1-C6 Protection from Fire until 28 February 2015. It can be used for building consent applications submitted before 1 March 2015.

| Document History | | |
|------------------------|--|---|
| | Date | Alterations |
| New document | Effective from 10 April 2012 | C/AS5 is a new publication that can be used to show compliance with the Building Code Clauses C1-C6 Protection from Fire. |
| Amendment 1 (Errata 1) | Effective from 15 February 2013 until 18 June 2014 | pp. 7–8 References pp. 13–14 Definitions p. 22 1.3 p. 25 Table 1.2 p. 27 2.2.1 and 2.2.3 p. 38 Table 3.2 p. 39 Figure 3.7 p. 44 Figure 3.12 p. 54 3.15.5 p. 74 4.15.6–4.15.8 pp. 85–97 5.2.1, 5.3.2, 5.5.4, 5.7.6, Figures 5.3 and 5.7, Table 5.2 p. 112 C4.1.2 and C5.1.1 p. 116 Index |
| Amendment 2 | Effective from 19 December 2013 until 28 February 2015 | p. 7 References pp. 10 and 15 Definitions pp. 20 and 22 1.1.1, 1.3, Table 2.1 pp. 27–28 2.2.1, 2.2.3, 2.2.8 p. 30 2.3.1, 2.3.13 p. 34 3.3.2 p. 49 3.10.4 p. 54 3.15.2 p. 62 4.4.4, 4.4.5 p. 69 4.13.5, 4.13.6 p. 74 4.16.1 pp. 80–82 4.16.11, 4.16.12, 4.17.4, 4.17.6 p. 95 Figure 5.5 p. 104 7.2 p. 111 B2.1.1 p. 112 C6.1.2 |
| Amendment 3 | Effective from 1 July 2014 | p. 7 References pp. 10, 14 and 15 Definitions pp. 20–22 1.1.1, 1.1.2, 1.3, Table 1.1 pp. 26–27 2.2.1, Table 2.0 p. 30 2.3.13 p. 35 3.3.2 p. 38 Table 3.2 p. 45 3.7.13 pp. 48–50A 3.9.4, 3.10.2, 3.10.4, 3.10.5, 3.11.1, 3.11.5, Figure 3.17A, Table 3.4 p. 54 3.15.2 p. 69 4.13.6 p. 74 4.16.1 pp. 80–83 4.16.12, 4.17.2, 4.17.5, 4.18, Table 4.1 p. 85 5.3.1 p. 92, 94 5.6.8, 5.7.6, Tables 5.2/2 and 5.3 p. 112 C2.1, C4.1.2, C5.1.1 p. 116 Index |

References

For the purposes of New Zealand Building Code compliance, the New Zealand and other Standards, and other documents referred to in this Acceptable Solution (primary reference documents) shall be the editions, along with their specific amendments, listed below. Where the primary reference documents refer to other Standards or other documents (secondary reference documents), which in turn may also refer to other Standards or other documents, and so on (lower order reference documents), then the applicable version of these secondary and lower order reference documents shall be the version in effect at the date this Acceptable Solution was published.

| Standards New Zealand | | Where quoted |
|--|---|--|
| NZS/BS 476:- Part 21: 1987 | Fire tests on building materials and structures Methods for determination of the fire resistance of loadbearing elements of construction | C5.1.1 |
| Part 22: 1987 | Methods for determination of the fire resistance of non-loadbearing elements of construction | C5.1.1 |
| AS/NZS 1668:- Part 1: 1998 | The use of ventilation and air conditioning in buildings Fire and smoke control in multi-compartment buildings <i>Amend: 1</i> | 3.10.4, 3.10.5, 4.16.12 Amends 2 and 3 Table 2.1, A2.1.1 |
| AS/NZS 2918: 2001 | Domestic solid fuel burning appliances – installation | 7.1.1, 7.1.2, 7.3.3, 7.5.5, 7.5.10 Comment, 7.5.12, Figure 7.2 |
| NZS 4232:- Part 2: 1988 | Performance criteria for fire resisting closures Fire resisting glazing systems | Definitions |
| NZS 4332: 1997 | Non-domestic passenger and goods lifts | 6.4.3 |
| NZS 4510: 2008 <i>Amend: 1</i> | Fire hydrant systems for buildings | Table 2.1, A2.1.1 |
| NZS 4512: 2010 | Fire detection and alarm systems in buildings | Definitions, Table 2.1, 2.3.13, 6.2.1, A2.1.1, C6.1.6 |
| NZS 4515: 2009 | Fire sprinkler systems for life safety in sleeping occupancies (up to 2000 m ²) | Definitions, 2.3.13 Amend 3 Jul 3 4.11.7, 6.2.1, B3.1.1 |
| NZS 4520: 2010 | Fire resistant doorsets | 4.2.4, 4.16.6, C6.1.1 |
| NZS 4541: 2013 | Automatic fire sprinkler systems | Definitions, Table 2.1, 2.3.13, 5.2.2, 6.2.1, B2.1.1 |
| AS/NZS 5601:- Part 1: 2010 <i>Amend: 1</i> | Gas installation General installations | 7.2.1, 7.2.2 |
| Standards Australia | | |
| AS 1366:- Part 1: 1992 <i>Amend: 1</i> | Rigid cellular plastics sheets for thermal insulation Rigid cellular polyurethane (RC/PUR) | 4.17.2 |
| Part 2: 1992 | Rigid cellular polyisocyanurate (RC/PIR) | 4.17.2 |
| Part 3: 1992 <i>Amend: 1</i> | Rigid cellular polystyrene – moulded (RC/PS-M) | 4.17.2 |
| Part 4: 1989 | Rigid cellular polystyrene – extruded (RC/PS-E) | 4.17.2 |

Errata 1
Feb 2013

Amend 2
Dec 2013

| | | Where quoted |
|--|---|-------------------------|
| AS 1530:- | Methods for fire tests on building materials, components and structures | |
| Part 1: 1994 | Combustibility test for materials | C4.1.1 |
| Part 2: 1993 | Test for flammability of materials | 4.17.8, 4.17.9 |
| Part 4: 2005 | Fire-resistance tests of elements of building construction | 4.5.9, C5.1.1 |
| AS 1691: 1985 | Domestic oil-fired appliances – installation | 7.3.1, 7.3.2 |
| AS 4072:- | Components for the protection of openings in fire-resistant separating elements | |
| Part 1: 2005 | Service penetrations and control joints <i>Amend: 1</i> | C5.1.2 |
| Errata 1 Feb 2013 | | |
| International Standards Organisation | | |
| ISO 5660:- | Reaction-to-fire tests – Heat release, smoke production and mass loss rate | |
| Part 1: 2002 | Heat release rate (cone calorimeter method) | C4.1.2, C7.1.1, C7.1.2 |
| Part 2: 2002 | Smoke production rate (dynamic measurement) | C4.1.2 |
| Errata 1 Feb 2013 | | |
| ISO 9239:- | Reaction to fire tests for flooring | |
| Part 1: 2010 | Determination of the burning behaviour using a radiant heat source | 4.17.3, Table 4.2, C2.1 |
| Errata 1 Feb 2013 | | |
| ISO 9705: 1993 | Fire tests – Full scale room test for surface products | C4.1.2 |
| European Standards Organisation | | |
| Errata 1 Feb 2013 | | |
| BS EN 12101:- | Smoke and heat control systems | |
| Part 1: 2005 | Specification for smoke barriers | Definitions |
| Building Research Establishment (UK) | | |
| BRE Defect Action Sheet DAS 131: May 1989 | External walls: Combustible external plastics insulation: Horizontal fire barriers | 5.7.18 Comment |
| BRE Report 135: 1988 | Fire performance of external thermal insulation for walls in multi-storey buildings. Rogowski B.F., Ramaprasad R., Southern J.R. | 5.7.18 Comment |
| National Fire Protection Association of America | | |
| NFPA 285: 1998 | Standard method of test for the evaluation of flammability characteristics of exterior non-load bearing wall assemblies containing components using the intermediate scale, multi-storey test apparatus | 5.8.2 |
| American Society for Testing and Materials | | |
| ASTM D 2898: 2010 | Standard practice for accelerated weathering of fire-retardant-treated wood for fire testing | C7.1.3 |
| New Zealand Legislation | | |
| Fire Safety and Evacuation of Buildings Regulations 2006 | | Definitions |
| Hazardous Substances and New Organisms Act 1996 | | 1.1.5 |

Definitions

The full list of definitions for italicised words may be found in the New Zealand Building Code Handbook.

Access route A continuous route that permits people and goods to move between the apron or *construction* edge of the *building* to spaces within a *building*, and between spaces within a *building*.

Accessible Having features to permit use by *people with disabilities*.

Accessible route An *access route* usable by *people with disabilities*. It shall be a continuous route that can be negotiated unaided by a wheelchair user. The route shall extend from street *boundary* or car parking area to those spaces within the *building* required to be *accessible* to enable *people with disabilities* to carry out normal activities and processes within the *building*.

Adjacent building A nearby *building*, including an adjoining *building*, whether or not erected on *other property*.

Basement Any *firecell* or part of a *firecell* below the level of the lowest *final exit*.

Comment:

Because *fire safety systems* are increased with increases in *escape height*, the precautions for *basements* increase with *basement* depth. Thus a single floor *building* with one *basement* level is treated as a two floor *building*, a single floor *building* with three *basement* levels as a four floor *building*.

Boundary means any *boundary* that is shown on a survey plan that is approved by the Surveyor-General and deposited with the Registrar-General of Land, whether or not a new title has been issued.

Building has the meaning given to it by sections 8 and 9 of the Building Act 2004.

Comment:

Notwithstanding the definition of *building*, a number of separated *buildings* cannot be taken as a single *firecell* for the purposes of this Acceptable Solution.

Building Act 2004 (the Building Act) means the principal legislation dealing with building controls in New Zealand.

Comment:

The *Building Act* applies to the construction, alteration, and demolition of new and existing buildings throughout New Zealand.

Building Code means the regulations made under section 400 of the *Building Act 2004*.

Building consent means consent to carry out *building* work granted by a *building consent authority* under section 49 of the *Building Act 2004*.

Building consent authority has the meaning ascribed to it by section 7 of the *Building Act 2004*.

Building element Any structural and non-structural component or assembly incorporated into or associated with a *building*. Included are *fixtures*, services, *drains*, permanent mechanical installations for access, glazing, partitions, ceilings and temporary supports.

Building height Building height means the vertical distance between the floor level of the lowest *occupied space* above the ground and the top of the highest occupied floor, but not including spaces located within or on the roof that enclose stairways, lift shafts, or machinery rooms.

Cavity barrier A *construction* provided to close openings within a *concealed space* against the passage of *fire*, or to restrict the spread of *fire* within such spaces.

Chimney A *non-combustible* structure which encloses one or more *flues*, *fireplaces* or other heating appliances.

Chimney back The *non-combustible* wall forming the back of a *fireplace*.

Chimney breast The front *fireplace* wall construction above the *fireplace* opening.

Chimney jambs The side walls of a *fireplace*.

Combustible See *non-combustible*.

Concealed space Any part of the space within a *building* that cannot be seen from an *occupied space*.

Comment:

This term includes any ceiling space, roof space, space under a raised floor (such as computer rooms, floors, or stages), plenums, spaces under a tiered floor, "left-over spaces" created when some structural element or the like has been covered in; small service or duct spaces within the volume of a *firecell* and the like, but not a *protected shaft*.

Construct in relation to a *building*, includes to design, build, erect, prefabricate, and relocate the *building*; and construction has a corresponding meaning.

Damper blade A component of a *fire damper* that closes off the airway within a *fire damper* upon detection of *fire* or smoke.

Dead end That part of an open path where escape is possible in only one direction.

Comment:

A *dead end* ceases to exist where the *escape route* reaches a point in the *open path* which offers alternative directions of travel, or at a *final exit* or an *exitway*.

Doorset A complete assembly comprising a door leaf or leaves including any glazed or solid panels adjacent to or over the leaves within the door frame including hardware or other inbuilt features; and a door frame, if any, with its fixings to the wall and, for a sliding or tilting door, all guides and their respective fixings to the lintel, wall or sill.

Early childhood centre (ECC) means premises used regularly for the education or care of 3 or more children (not being children of the persons providing the education or care, or children enrolled at a school being provided with education or care before or after school) under the age of six—

a) by the day or part of a day; but

b) not for any continuous period of more than seven days.

ECC does not include home based early childhood services.

Escape height The height between the floor level in the *firecell* being considered and the floor level of the required *final exit* which is the greatest vertical distance above or below that *firecell*.

Comment:

1. It is necessary only to use the greatest height to the exits required for the *firecell* being considered, even though the *building* may have other *final exits* at lower or higher levels.
2. Where the *firecell* contains *intermediate floors*, or upper floors within *household units* the *escape height* shall be measured from the floor having the greatest vertical separation from the *final exit*.

Escape route A continuous unobstructed route from any *occupied space* in a *building* to a *final exit* to enable occupants to reach a *safe place*, and shall comprise one or more of the following: *open paths* and *safe paths*.

Comment:

Doors are not obstructions in an escape route provided they comply with C/AS1– C/AS7 and D1/AS1.

Amend 3
Jul 2014

Exitway All parts of an *escape route* protected by *fire* or *smoke separations*, or by distance when exposed to open air, and terminating at a *final exit*.

External wall Any exterior face of a *building* within 30° of vertical, consisting of *primary* and/or *secondary elements* intended to provide protection against the outdoor environment, but which may also contain *unprotected areas*.

Comment:

A roof is an *external wall* if within 30° of the vertical.

Amend 2
Dec 2013

Foamed plastics *Combustible* foamed plastic polymeric materials of low density (typically less than 100 kg/m³) and are classified as cellular polymers which are manufactured by creating a multitude of fine void (typically 90 to 98%) distributed more or less uniformly throughout the product. Examples of *foamed plastics* are latex foams, polyethylene foams, polyvinyl chloride foams, expanded or extruded polystyrene foams, phenolic foams, ureaformaldehyde foams, polyurethane foams and polychloropene foams.

Comment:

1. *Foamed plastics* may be rigid or flexible, but rigid foams are the most common in *building* products. When burnt they tend to generate high levels of heat energy (kJ/kg) and varying quantities of smoke and other toxic gases depending on the nature and volume of the particular product.
2. Where doubt exists as to whether a *building* material is *foamed plastics*, an opinion should be sought from a *person* or organisation with appropriate skill and experience in *fire* engineering. That opinion should be included with the *building consent* application to the *building consent authority*.

Group Number The classification number for a material used as a finish, surface, lining, or attachment to a wall or ceiling within an *occupied space* and determined according to the *standard test* methods for measuring the properties of lining materials.

Comment:

The method for determining a Group Number is described in C/VM2 Appendix A.

Group sleeping area A *firecell* containing communal sleeping accommodation for a specified number of people who may or may not be known to one another. Partial subdivision within the *firecell* is permitted with specific limitation including that no *occupied space* is fully enclosed and all *occupied spaces* are open and available to all occupants at any time. A *group sleeping area firecell* may include spaces for associated direct support functions, such as hygiene facilities and tea making (not cooking) activities, for use by the occupants. It does not include spaces, such as waiting rooms, lounges, dining rooms or kitchens, providing a communal service function for all occupants.

Comment:

1. Examples of *group sleeping area firecells* are dormitories, hospital wards, *wharehenui*, backpacker hostels and ski lodges.
2. The maximum number of people permitted in a *group sleeping area firecell*, and the permitted form of subdivision, will depend on the ability of the occupants to react to the presence of *fire* and escape to a *safe place*.

Handrail A rail to provide support to, or assist with the movement of a *person*.

Hazardous Creating an unreasonable risk to people of bodily injury or deterioration of health.

Hazardous substance has the meaning ascribed to it by section 2 of the Fire Service Act 1975 and section 2 of the Hazardous Substances and New Organisms Act 1996.

Hearth The insulating floor under the *fire* and in front and at the sides of the *fireplace*.

Hold-open device A device which holds a *smoke control door* or *fire door* open during normal use, but is released by deactivating the device by an automatic *fire* detection system, allowing the door to close automatically under the action of a self-closing device.

Household unit

(a) means a *building* or group of *buildings*, or part of a *building* or group of *buildings*, that is—

- (i) used, or intended to be used, only or mainly for residential purposes; and
- (ii) occupied, or intended to be occupied, exclusively as the home or residence of not more than 1 household; but

(b) does not include a hostel, boarding house, or other specialised accommodation.

HVAC An abbreviation for heating, ventilating and airconditioning.

Insulating material A material that has a thermal conductivity of less than 0.07 W/mK.

Insulation In the context of *fire* protection, the time in minutes for which a prototype specimen of a *fire separation*, when subjected to the *standard test* for *fire* resistance, has limited the transmission of heat through the specimen.

Integrity In the context of *fire* protection, the time in minutes for which a prototype specimen of a *fire separation*, when subjected to the *standard test* for *fire* resistance, has prevented the passage of flame or hot gases.

Comment:

The precise meaning of *integrity* depends on the type of *building elements* being treated and how it is defined in the *standard test* being used.

Intended use In relation to a *building*,—

- (a) includes any or all of the following:
- (i) any reasonably foreseeable occasional use that is not incompatible with the *intended use*;
 - (ii) normal maintenance;
 - (iii) activities undertaken in response to *fire* or any other reasonably foreseeable emergency; but
- (b) does not include any other maintenance and repairs or rebuilding.

Intermediate floor Any upper floor within a *firecell* which because of its configuration provides an opening allowing smoke or *fire* to spread from a lower to an upper level within the *firecell*.

Comment:

1. Upper floors within *household units* need not meet the specific *fire* safety requirements which apply to *intermediate floors* in all other situations.
2. An *intermediate floor* may be open to the *firecell* or enclosed with non-*fire* rated *construction*. If enclosed with *fire* rated walls another *firecell* is created.
3. *Household units* occur only in *risk groups* SM and SH. Life safety provisions are governed by the limitations in permitted *open path* lengths.
4. *Risk groups* SM, SI, CA, WB, WS and VP allow limited area intermediate floors of 20% or 40% of the floor area depending on other fire safety requirements. In other situations C/VM2 is to be used.

Life rating The *fire resistance rating* to be applied to elements of *construction* that allows movement of people from their location in a *building* to a *safe place*.

Means of escape from fire In relation to a *building* that has a floor area,—

- a) means continuous unobstructed routes of travel from any part of the floor area of that *building* to a place of safety; and

- b) includes all active and passive protection features required to warn people of *fire* and to assist in protecting people from the effects of *fire* in the course of their escape from the *fire*.

Comment:

Means of escape include features providing visibility in *escape routes* complying with F6 and signs complying with F8.

Non-combustible Materials shall be classified as *combustible* or *non-combustible* when tested to AS 1530 Part 1.

Notional boundary The *boundary* which for *fire* safety purposes, is assumed to exist between two *buildings* on the same property under a single land title.

Comment:

The *notional boundary* is assumed to exist in the space between the *buildings* and is positioned so that each of the *buildings* would comply with the provisions of the space separation having regards to the amount of its unprotected area. In practice if one of the *buildings* is existing, the position of the *boundary* will be set by the space separation factors for that *building*.

1. The siting of the new *building* which is adjacent to the existing *building* can be checked to see that it also complies, using a revised *notional boundary* location that is no closer than 1.0 metre from the existing *building*.
2. Where both *buildings* are new it is allowable to move the *notional boundary* between *buildings*. However in assessing fire spread from one *building* to the other and vice versa, the *notional boundary* should not be located any closer than 1.0 metre from the *building* that is receiving the radiation.

Amend 3
Jul 2014

Occupant load The greatest number of people likely to occupy a particular space within a *building*. It is determined by:

- a) dividing the total floor area by the m² per person (occupant density) for the activity being undertaken, or
- b) for sleeping areas, counting the number of sleeping (or care) spaces, or
- c) for fixed seating areas, counting the number of seats.

Comment:

See Paragraphs 1.4.5 (for fixed seating) and 1.4.6 (for sleeping areas) where appropriate.

Occupied space Any space within a *building* in which a *person* will be present from time to time during the *intended use* of the *building*.

Open path That part of an *escape route* (including *dead ends*) within a *firecell* where occupants may be exposed to *fire* or smoke while making their escape.

Open space Open space means land on which there are, and will be, no *buildings* and which has no roof over any part of it other than overhanging eaves.

Other property Any land or *buildings* or part of any land or *buildings*, that are:

- a) not held under the same *allotment*; or
- b) not held under the same *ownership*; and includes a *road*.

Owner In relation to land and any *buildings* on the land,—

- (a) means the *person* who—
 - (i) is entitled to the rack rent from the land; or
 - (ii) would be so entitled if the land were let to a tenant at a rack rent; and
- (b) includes—
 - (i) the *owner* of the fee simple of the land; and
 - (ii) for the purposes of Building Act sections 32, 44, 92, 96, 97, and 176(c), any person who has agreed in writing, whether conditionally or unconditionally, to purchase the land or any leasehold estate or interest in the land, or to take a lease of the land, and who is bound by the agreement because the agreement is still in force.

Penetration A *building element* passing through an opening in a *fire separation*.

Comment:

A *penetration* may include, but is not limited to: pipes, cables, ducts, hoses, drains, cable trays, ropes, data outlets, power outlets, hatches, glazing, structural bracing etc.

People with disabilities People whose ability to use *buildings* is affected by mental, physical, hearing or sight impairment.

Place of safety Place of safety means either—

- (a) a *safe place*; or
- (b) a place that is inside a *building* and meets the following requirements:
 - (i) the place is constructed with *fire separations* that have fire resistance sufficient to withstand *burnout* at the point of the *fire source*; and
 - (ii) the place is in a *building* that is protected by an automatic fire sprinkler system that complies with NZS 4541 or NZS 4515 as appropriate to the *building's* use; and
 - (iii) the place is designed to accommodate the intended number of persons; and
 - (iv) the place is provided with sufficient means of escape to enable the intended number of persons to escape to a *safe place* that is outside a *building*.

Primary element A *building element* providing the basic loadbearing capacity to the structure, and which if affected by *fire* may initiate instability or premature structural collapse.

Comment:

Suspended floors in multi-storey *buildings* are *primary elements*.

Property rating The *fire resistance rating* to be applied to elements of *construction* that allows for protection of *other property*.

Protected shaft A space, other than a *safe path*, enclosed by *fire separations* or *external walls* used to house *building services*, lifts, or conveyors which pass from one *firecell* to another.

Railway line has the meaning ascribed to it by section 4 of the Railways Act 2005.

Amend 3
Jul 2014

Amend 2
Dec 2013

Relevant boundary Relevant *boundary* means the *boundary* of an *allotment* that is *other property* in relation to the *building* in question and from which is measured the separation between the *building* and that *other property*; and for the *external wall* of any *building*, the *relevant boundary* is the nearest of—

- (a) a *boundary* of a freehold *allotment*, except that if the *other property* is a *road*, *railway line*, or public *open space*, the *relevant boundary* is the *boundary* on the far side of that other *property*; or
- (b) a *boundary* of a cross-lease or a company lease or a licence, except that if the *other property* is *open space* to which the lessee or licensee of the *building* in question has an exclusive right of access and occupation or to which 2 or more occupiers of the *building* in question have rights of access and occupation, the *relevant boundary* is the *boundary* on the far side of that other *property*; or
- (c) a *boundary* shown on a unit plan (but excluding a *boundary* between a principal unit and its accessory unit), except that if the *other property* is open space and is common property, the *relevant boundary* is the *boundary* on the far side of that *other property*.

Comment:

1. Where an easement, such as a right of way, occurs within an *allotment*, the *relevant boundary* shall remain the same as if the easement did not exist.
2. *Boundaries* within a cross-lease or company lease or licence are shown on a survey plan. In some cases the *boundary* is the *external wall* or roof of a *building*.
3. The unit title *boundaries* of principal units, accessory units, and common property are shown in the unit plan. A *boundary* is frequently an internal or *external wall*, an upper floor, or the roof of a *building*.
4. A wall along a *boundary* between two *allotments* is called a “party wall” when the *owners* of the *allotments* each have legal rights in respect of that wall registered by way of easements on one or both titles. An internal wall between cross-leases, company leases, or unit titles, or between one of them and common property, is not generally called a party wall but in that case also the lessees, unit title holders, or corporate body concerned each have legal rights in respect of that wall. Such a wall separates areas which are *other property* in relation to each other, but the wall itself is part of each property. The *fire* protection consequence of that legal concept is that such a wall can be regarded as a *fire separation* providing protection against horizontal *fire* spread in each direction. In other words, that wall may provide the appropriate *FRR* instead of each property having its own wall of that *FRR*.

Risk group The classification of a *building* or *firecells* within a *building* according to the use to which it is intended to be put.

Road This term has the meaning ascribed to it by section 315 of the Local Government Act 1974 and includes a public place and also includes a motorway.

Safe path That part of an *exitway* which is protected from the effects of *fire* by *fire separations*, *external walls*, or by distance when exposed to open air.

Part 1: General

CONTENTS

- 1.1 Introduction and scope
- 1.2 Using this Acceptable Solution
- 1.3 Alterations and changes of use to buildings
- 1.4 Calculating occupant loads

1.1 Introduction and scope

This Acceptable Solution can be used for establishing compliance with NZBC C1 to C6 Protection from Fire. It is one of a suite of Acceptable Solutions C/AS1 to C/AS7, each of them corresponding to a *risk group* (summarised in Table 1.1 and defined in Paragraph 1.1.1).

If the uses of a *building*, or part of a *building*, cover more than one *risk group*, one or more of these Acceptable Solutions may need to be followed to demonstrate compliance. Paragraph 1.2 explains how to determine the relevant *risk groups* for the *building* activities.

Notes shown under '**Comment**', occurring throughout this document, are for guidance purposes only and do not form part of this Acceptable Solution. Words in *italic* are defined at the front of this document. For ease of use, paragraphs, tables and figures containing similar information are allocated the same reference numbers in each of the Acceptable Solutions. If there is no corresponding information in a particular Acceptable Solution, the numbering is preserved by the notation:

- 1) "THIS PARAGRAPH DELIBERATELY LEFT BLANK"
- 2) "**This table not required for this Acceptable Solution**"
- 3) Figures are omitted without notification.

Appendices to this Acceptable Solution are part of and have equal status to this Acceptable Solution.

Comment:

It is recommended that the commentary document for Acceptable Solutions C/AS1 to C/AS7 be read in conjunction with this Acceptable Solution.

| Table 1.1 Risk groups and Acceptable Solutions | | | |
|--|--|------------|--|
| | Acceptable Solution | Risk group | Applies to |
| C/AS1 | Buildings with sleeping (residential) and outbuildings | SH | Houses, townhouses and small <i>multi-unit dwellings</i> Outbuildings |
| C/AS2 | Sleeping (non institutional) | SM | Permanent accommodation eg, apartments Transient accommodation eg, hotels, motels, hostels, backpackers, refuge shelters Education accommodation |
| C/AS3 | Care or detention | SI | Institutions, hospitals (excluding special care facilities), rest homes, residential care, care in the community houses and homes, medical day treatment (using sedation), detention facilities (excluding prisons) |
| C/AS4 | Public access and educational facilities | CA | Crowds, halls, recreation centres, public libraries (<2.4 m storage height), cinemas, shops, personal services (eg, dentists and doctors except as included above, beautician and hairdressing salons), schools, restaurants and cafes, <i>early childhood centres</i> |
| C/AS5 | Business, commercial and low level storage | WB | Offices (including professional services such as law and accountancy practices), laboratories, workshops, manufacturing (excluding <i>foamed plastics</i>), factories, processing, temperature controlled storage (capable of <3.0 m storage height other than some limited areas in processing areas) and other storage <i>buildings</i> capable of <5.0 m storage height (except some limited areas <8.0 m to the apex), light aircraft hangars |
| C/AS6 | High level storage and other high risks | WS | Warehouses (capable of ≥ 5.0 m storage height other than some limited areas, see C/AS5), temperature controlled storage (capable of ≥ 3.0 m storage height other than some limited areas, see C/AS5), trading and bulk retail (≥ 3.0 m storage height) |
| C/AS7 | Vehicle storage and parking | VP | Vehicle parking – within a <i>building</i> or a separate <i>building</i> |

Amends
2 and 3Amend 3
Jul 2014Amend 3
Jul 2014Amend 3
Jul 2014**Comment:**

Designing a *building* to provide *fire safety* involves decisions on both the *construction materials* and layout needed to reduce the risk to an acceptable level. The risk is assessed according to: the number and mobility of the occupants (*occupant load* and *risk group* of the *building*); the activities undertaken within the *building*; and the nature of the *building materials* and contents. This assessment allows each *building activity* to be categorised in a *risk group*, which is the basis for determining *fire safety features*.

Scope

1.1.1 The scope of this Acceptable Solution is restricted to *risk group WB*. This covers *buildings*, or parts of *buildings*, where people work. These include the following, provided they are no more than 20 storeys high (from ground level):

a) Offices (including professional services such as law and accountancy practices)

b) Industrial *buildings* such as factories, processing and manufacturing plants (excluding *foamed plastics*). May include temperature controlled storage up to a maximum area of 500 m² with a maximum capable of storage height of 5.0 m.

c) *Buildings* or parts of *buildings* capable of less than 5.0 m storage height

ca) Warehouses and storage *buildings* capable of storage of 5.0 m or greater but with a height to apex of less than 8.0 m and *building floor area* of less than 4200 m²

d) Temperature controlled storage capable of less than 3.0 m high storage height

e) Laboratories

f) Light aircraft hangars,

g) Normally unoccupied *buildings* such as *buildings* containing plant or fixed machinery only, and

Amend 2
Dec 2013Amend 3
Jul 2014Amend 3
Jul 2014

Amend 3
Jul 2014

- h) Spray painting operations, whether or not within a spray booth.

Outside the scope of this Acceptable Solution

1.1.2 *Buildings* or parts of *buildings* in *risk groups* other than WB are outside the scope of this Acceptable Solution. Refer to Table 1.1 and use the corresponding Acceptable Solution instead.

Buildings with complex features are outside the scope of this Acceptable Solution and also of Acceptable Solutions C/AS1 to C/AS7 corresponding to other *risk groups*. Verification Method C/VM2 shall be used instead. Complex features include:

- a) Atriums
- b) *Intermediate floors*, other than limited area *intermediate floors*
- c) Storage *buildings* that are capable of a storage height of ≥ 5.0 m, and
- d) *Buildings* more than 20 storeys high.

Buildings that require specific *fire* engineering design (ie, those requiring design calculations and modelling) also fall outside the scope of the Acceptable Solutions. If the Acceptable Solution cannot be followed in full, use Verification Method C/VM2 to demonstrate compliance.

1.1.3 This Acceptable Solution allows for an 'all out' evacuation strategy only and does not provide features that would allow delayed evacuation strategies.

Amend 3
Jul 2014

1.1.4 THIS PARAGRAPH DELIBERATELY LEFT BLANK

Hazardous substances not covered by this Acceptable Solution

1.1.5 This Acceptable Solution does not provide for any use, storage or processing of *hazardous substances*. Compliance with NZBC F3 and the Hazardous Substances and New Organisms Act 1996 shall be ensured where applicable in addition to the requirements of this Acceptable Solution.

1.2 Using this Acceptable Solution

1.2.1 The process for using this Acceptable Solution shall be as follows.

Step 1: Determine which Acceptable Solutions apply

- a) Determine the *risk group* for each of the activities carried out in the *building* (refer to Table 1.1 and to Paragraph 1.1.1 of this and the other Acceptable Solutions). If the activity is not listed explicitly, choose the nearest suitable *risk group*.
- b) If there is more than one *risk group* for a *firecell*, determine its primary *risk group* (see Paragraph 1.2.2: this is the one with the most onerous *fire* safety requirements).
- c) Apply this Acceptable Solution for any *firecell* in *risk group* WB by following steps 2 and 3.
- d) Then apply the relevant Acceptable Solutions for *firecells* with any other *risk groups* in the *building*.

Comment:

Firecells: The Acceptable Solutions use the concept of *firecells* to divide *buildings* into compartments. Each *firecell* can be considered individually in the first instance and subsequently the *fire* safety requirements for the whole *building* can be developed, for example when considering a multi-storey *building* that has different activities on a number of floors, or even has different activities/uses on the same floor.

Future flexibility: A *building* is very likely to undergo one or more changes of use over its lifetime. Even under the same use, floor layout and furnishing will alter to accommodate changes in technology and occupant practices. Therefore, at the time of initial *construction*, *owners* should consider the advantages of providing for *fire* safety systems to suit alternative occupancies as these systems could be difficult or excessively expensive to install at a later date.

For Paragraph 1.2.1 Step 1 b), the most onerous *fire* safety requirements usually occur in Part 2: Firecells, *fire* safety systems and *fire* resistance ratings of each Acceptable Solution. *Buildings* or parts of *buildings* with sleeping occupancies generally have the most onerous requirements.

Step 2: Determine the parameters for risk group WB

- a) Establish the relevant *building* measurements (these will include *building height*, floor plans, wall openings and distances to *relevant boundaries*).
- b) Work out the *occupant loads* for the relevant *building* spaces (refer to Paragraph 1.4).

Comment:
Applying the Acceptable Solution depends largely on the basic *building* measurements as above. Therefore, this should be determined as accurately as possible before using this document.

Step 3: Satisfy the fire safety requirements

Satisfy the *fire* safety requirements of this Acceptable Solution (refer to Parts 2-7), based on the *occupant loads* and on the *building's* dimensions and features where required.

Primary risk groups

1.2.2 If a *building* contains a number of different activities which individually may be categorised in different *risk groups*, the *risk group* designated for a particular *firecell* within a *building* shall be that of the primary *risk group*. The primary *risk group* shall be that one within the *firecell* that has the most onerous *fire* safety requirements.

1.2.3 Depending on the particular *building* and the uses or activities within that *building*, there may be several primary *risk groups*, with one or more on each floor.

Comment:
For example, levels of a multi-storey *building* may be categorised in different *risk groups* such as:

| | |
|------------------------|----|
| Basement carparks | VP |
| Shopping floors | CA |
| Office floors | WB |
| Domestic accommodation | SM |

A single floor may also contain several *risk groups* such as:

| | |
|-----------|----|
| Offices | WB |
| Shops | CA |
| Cafeteria | CA |

1.3 Alterations and changes of use to buildings

If this Acceptable Solution is the basis of compliance of *building work* relating to an *alteration*, addition or change of use of an existing *building*, the *building work* shall comply fully with this Acceptable Solution.

Errata 1
Amend 2

Comment:
Sections 112 and 115 of the Building Act require the *means of escape from fire* of an existing *building* being altered, or the use being changed, to comply as nearly as is reasonably practicable with the Building Code.

Parts 1, 2, 3, and 4 of this Acceptable Solution may be used for an assessment of the *means of escape from fire* of an existing *building* that is being altered, to meet the requirements of section 112 of the *Building Act*.

Parts 1, 2, 3, and 4 of this Acceptable Solution may be used for an assessment of the *means of escape from fire*, and Part 5 for the assessment of *fire* rating performance, where an existing *building* is undergoing a change of use, to meet the requirements of section 115 of the Building Act.

The extent of assessment of the *means of escape from fire* of an existing *building* should follow the guidelines issued by MBIE "Requesting information about means of escape from fire for existing buildings". This considers a number of risk factors including:

- a) Age of the *building*
- b) *Importance level* of the *building*
- c) Extent of the *alteration*.

Amend 2
Dec 2013

An existing *building* with a high *risk score* from the guidelines should be assessed against all of the *building* systems and features specified in Parts 1, 2, 3 and 4 of this Acceptable Solution, or alternatively be assessed using Verification Method C/VM2.

Sections 112 and 115 of the *Building Act* require the existing *building* to comply with other parts of the Building Code to at least the same extent as before the *alteration* or addition.

Amend 2
Dec 2013

Amend 3
Jul 2014

| Table 1.2 Occupant densities for risk group WB | |
|---|--|
| Activity | Occupant density (m²/person) |
| Aircraft hangars | 50 |
| Bulk storage including racks and shelves | 100 |
| Call centres | 7 |
| Commercial laboratories, laundries | 10 |
| Computer server rooms | 25 |
| Heavy industry | 30 |
| Interview rooms | 5 |
| Commercial kitchens | 10 |
| Manufacturing and process areas | 10 |
| Meeting rooms | 2.5 |
| Offices | 10 |
| | |
| Reception areas | 10 |
| Workrooms, workshops | 5 |
| Staffrooms and lunchrooms | 5 |
| Boiler rooms, plant rooms | 30 |
| Parking buildings, garages | 50 |

Errata 1
Feb 2013

Part 2: Firecells, fire safety systems and fire resistance ratings

CONTENTS

- 2.1 Provision of firecells
- 2.2 Fire safety systems
- 2.3 Fire resistance ratings

2.1 Provision of firecells

Firecell floor area limits

2.1.1. When less than 15 m from a *relevant boundary*, the floor area of an unsprinklered *firecell* shall not exceed 5000 m².

2.1.2. If a *firecell* is 15 m or more from a *relevant boundary* or it is sprinkler protected, except when *risk groups* require subdivision or other area limitations are imposed by this Acceptable Solution, the *firecell* floor area may be unlimited.

Risk group CA

2.1.3. Where *risk group CA* is a support activity in *risk group WB* with a maximum occupant load of 100, such as a conference room used occasionally by people in an office complex, the space may be included in this *risk group*.

2.2 Fire safety systems

2.2.1 The *fire safety systems* for *firecells* required for this risk group shall be as follows. *Fire safety system* types shall be as defined in Table 2.1. If automatic heat or smoke detection systems are provided in addition to the requirements of this paragraph, a direct connection to the Fire Service is not required.

Amend 3
Jul 2014

For <100 people, <3.0 m storage height and ≤4 m escape height:

- a) Type 2 alarm system. A direct connection to the Fire Service is not required where a phone is available at all times for 111 calls. This system is not required where the *escape routes* serve no more than 50 people and:
 - i) the *building* is a single level *building*, and
 - ii) if the *building* is used for storage, the storage height is less than 3.0 m, and
- b) Type 18 *building fire* hydrant system, unless the Fire Service hose run distance from Fire Service vehicular access to any point on any floor is less than 75 m.

| Table 2.0 | | Alarm types for various occupant loads, storage heights and escape heights | | | |
|---|---------------------------|---|---|---|--|
| Occupant load | Capable of storage height | Apex height | Escape height (m) | | |
| | | | ≤ 4.0 | 4.0 to 25 | > 25 |
| < 100 people | No storage or <3 | N/A | Type 2 ^{2,4,5} Type 18 ¹ | Type 4 ^{2,3} Type 9 Type 18 ¹ | Type 7 Type 9 Type 18 ¹ |
| | 3 to 5 | N/A | Type 3 ⁴ Type 18 ¹ | | |
| | >5 | ≤ 8 and floor area < 4200 m ² | Type 3 ⁴ Type 18 ¹ | | |
| 100 to 1000 people | No storage | N/A | Type 4 ^{2,3} Type 9 Type 18 ¹ | Type 4 ^{2,3} Type 9 Type 18 ¹ | Type 7 Type 9 Type 18 ¹ |
| | 3 to 5 | N/A | Type 3 ⁴ Type 18 ¹ | | |
| | >5 | ≤ 8 and floor area < 4200 m ² | | | |
| > 1000 people | N/A | N/A | Type 7 Type 9 Type 18 ¹ | | |
| Notes <ol style="list-style-type: none"> 1. See Paragraph 2.2.1 for exceptions where not required. 2. See Paragraph 2.2.1 for circumstances that Type 3 or Type 6 may be substituted. 3. See Paragraph 2.2.1 for conditions where Type 6 may be installed. 4. Direct connection to the Fire Service is not required where a phone is available at all times. 5. See Paragraph 2.2.1 for circumstances where this system is not required. 6. Where not required each unit to be provided with Type 1. 7. See Paragraph 2.2.1 for circumstances where direct connection to Fire Service is not required. 8. See Paragraph 2.2.1 for circumstances where direct connection to Fire Service is not required and a Type 3 may be substituted. | | | | | |

Amend 3
Jul 2014

This paragraph deliberately left blank

Errata 1
Feb 2013Amend 3
Jul 2014

For:

1. Storage height of 3.0 m to 5.0 m and <1000 people and ≤ 4.0 m escape height, and
2. Storage height of >5.0 m and <1000 people and ≤ 4.0 m escape height and floor area less than 4200 m² and height to apex <8.0m:

- a) Type 3 alarm system. A direct connection to the Fire Service is not required where a phone is available at all times for 111 calls, and
- b) Type 18 *building fire* hydrant system, unless the Fire Service hose run distance for Fire Service vehicular access to any point on any floor is less than 75 m.

For 100 to 1000 people or >4.0 m but ≤ 25 m escape height:

- a) A Type 4 alarm system

A Type 3 with supplementary smoke detection may be substituted if the environment is challenging for smoke detection.

A Type 6 alarm system may be substituted provided:

 - i) The *occupant load* is no greater than 500, and
 - ii) Each floor is a separate *firecell*, and
 - iii) any small *intermediate floors* comply with Paragraph 4.13.5, and
 - iv) There are no sleeping *firecells* elsewhere in the *building*.

A direct connection to the Fire Service is not required where a phone is available at all times for 111 calls, and

Amend 2
Dec 2013

- b) Type 9 smoke control in air handling systems, and
- c) Type 18 *building fire* hydrant system in all cases where the height from the Fire Service attendance point to any floor is greater than 15.0 m. Otherwise, a Type 18 system is required unless the Fire Service hose run distance from Fire Service vehicular access to any point on any floor is less than 75 m.

Amend 3
Jul 2014

For >1000 people or >25 m escape height:

- a) Type 7 alarm system, and
- b) Type 9 smoke control in air handling systems, and
- c) Type 18 *building fire* hydrant system in all cases where the height from the Fire Service attendance point to any floor is greater than 15.0 m. Otherwise, a Type 18 system is required unless the Fire Service hose run distance from Fire Service vehicular access to any point on any floor is less than 75 m.

Amend 3
Jul 2014

2.2.2 THIS PARAGRAPH DELIBERATELY LEFT BLANK.

2.2.3 If any *firecell* in a *building* requires a manual or automatic *fire* alarm or sprinkler system, that system shall be provided in all other *firecells* throughout the *building* (refer to Figure 2.1). As a Type 5 system (refer to Table 2.1) provides for non-latching smoke detection with heat detection back-up in sleeping spaces, other (non-sleeping) *firecells* shall be protected with standard automatic smoke detection. Where sleeping spaces are provided in the other *firecells* they shall be protected with a Type 5 system where a Type 4 is being extended. Smoke detection shall not be extended into *risk group* VP: heat detection shall be provided instead. If *risk group* VP is sprinkler protected as required by C/AS7 and the VP risk is *fire separated* from the rest of the *building* with *fire* rated separations designed to the property rating, the sprinkler system need not be extended through the rest of the *building*.

Errata 1
Feb 2013

More than one risk group on a floor

2.2.4 If there is more than one *risk group* on one floor level, the *fire* safety requirements will depend on whether the *risk groups* occupy the same *firecell*, or whether the floor is divided by *fire separations* into different *firecells*.

Comment:

Refer to Paragraphs 2.2.1 to 2.2.3 for the requirements for individual *firecells* in this *risk group*.

2.2.5 Where *fire separations* are not needed between different *risk groups* on the same floor level, the *fire safety systems* adopted for the whole floor level shall be those of the primary *risk group* (as defined in Paragraph 1.2.2).

2.2.6 The *fire safety systems* required by Paragraph 2.2.3 shall be interconnected to alert all occupants of that floor level in the event of *fire*.

Comment:
Refer to Paragraphs 2.2.7 and 2.2.8 for the requirements for other floor levels in the *building*.

Other floors in a building

2.2.7 The alarm systems required in a *building* shall be interconnected to alert all *building* occupants in the event of *fire*, except:

- a) In areas that have the local smoke component of a Type 5 system.
- b) DELIBERATELY LEFT BLANK

Same risk group on different floors

2.2.8 Where *firecells* containing the same *risk group* occur at different levels in the same *building*, the *fire safety systems* for the *firecell* having the most onerous requirements shall be applied to all *firecells* in that *risk group*.

2.2.9 THIS PARAGRAPH DELIBERATELY LEFT BLANK

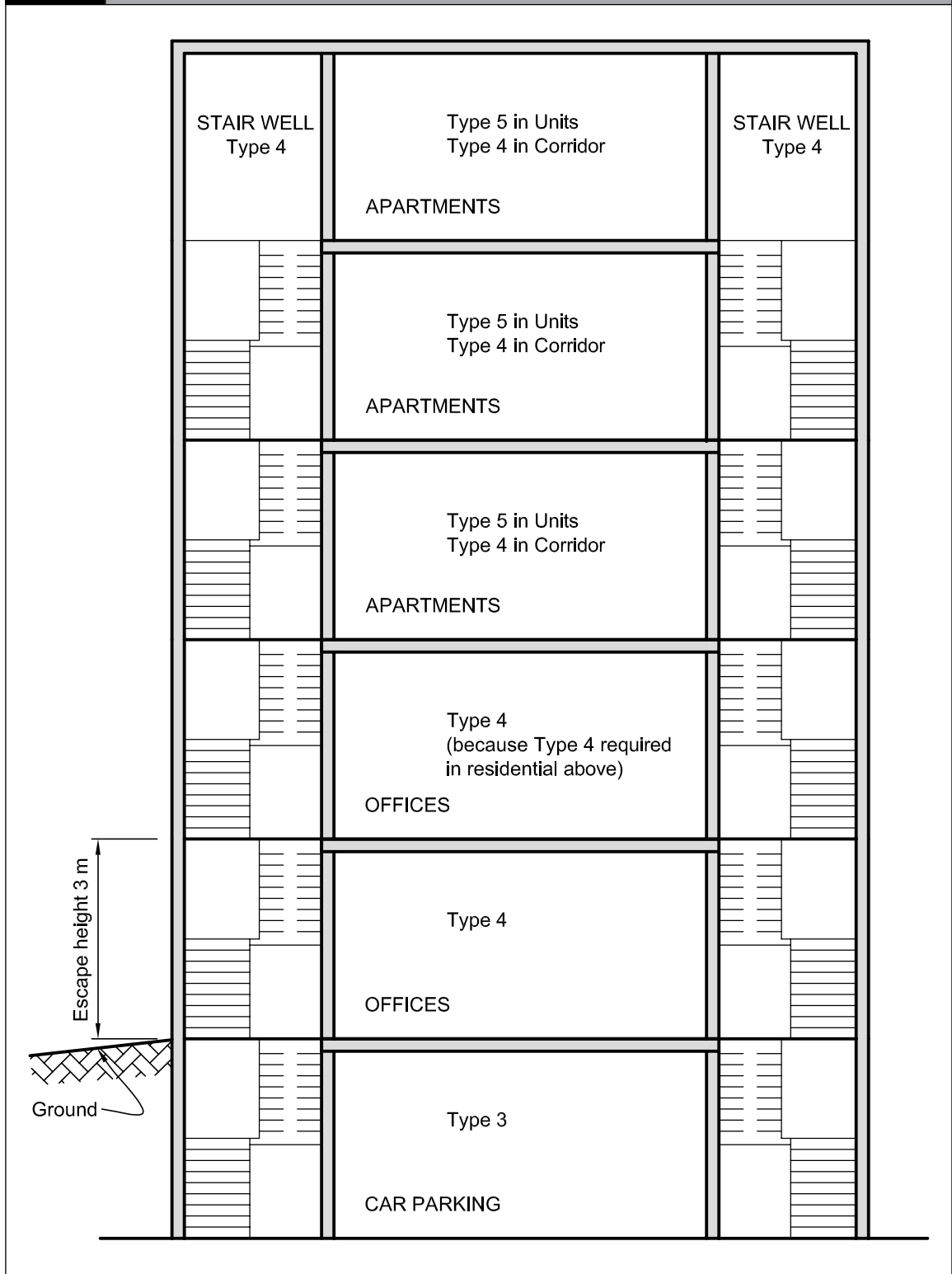
2.2.10 THIS PARAGRAPH DELIBERATELY LEFT BLANK

Amend 2
Dec 2013

| Table 2.1 Fire safety systems specified in this Acceptable Solution | | |
|---|--|-------------------------------------|
| Type of system | System description | Relevant Standards for installation |
| 2 | Alarm system with manual call points | NZS 4512 |
| 3 | Heat detection system with manual call points | NZS 4512 |
| 4 | Smoke detection and alarm system with manual call points | NZS 4512 |
| 5 | Enhanced smoke detection and alarm system with manual call points | NZS 4512 |
| 6 | Automatic <i>fire</i> sprinkler system | NZS 4541 |
| 7 | Automatic <i>fire</i> sprinkler system with smoke detection and alarm system | NZS 4541, NZS 4512 |
| 9 | Smoke control in air handling system | AS/NZS 1668.1 |
| 18 | <i>Building fire</i> hydrant system | NZS 4510 |



Figure 2.1 Systems throughout a building
Paragraph 2.2.3



2.3 Fire resistance ratings

FRR values

2.3.1 Unless explicitly stated otherwise in this Acceptable Solution, the *fire resistance ratings (FRRs)* that apply for this *risk group* shall be as follows:

Life rating = 60 minutes. This applies to *fire rating requirements* in Part 3: Means of escape and Part 4: Control of internal fire and smoke spread.

Property rating = 120 minutes. This applies to *fire rating requirements* in Part 5: Control of external fire spread except that where the storage height is greater than 3.0 m and the *building* is closer than 15 m to any *relevant boundary* the rating shall be 180 minutes.

Comment:

Throughout this Acceptable Solution, minimum *FRRs* are specified for particular situations. It is therefore essential to check for specific requirements.

Structural elements in a single storey *building* need not be *fire* rated if *FRRs* are not required for any other reason.

2.3.2 If a *fire* sprinkler system is provided, the *FRRs* for *risk group* WB shall be:

Life rating = 30 minutes, and

Property rating = 60 minutes, except that where the storage height is greater than 3.0 m and the *building* is closer than 15 m to any *relevant boundary*, the rating shall be 90 minutes.

2.3.3 If there is more than one *risk group* on one floor in the *building*, the highest required *FRR* shall be applied to common spaces and shared *escape routes* for that floor level.

General requirements for FRRs

2.3.4 *FRRs* shall apply to the sides of *primary* and *secondary elements* which are exposed to *fire*.

2.3.5 When different *FRRs* apply on each side of a *fire separation*, being a wall, the higher rating shall apply to both sides.

2.3.6 Floors shall have an *FRR* for exposure from the underside.

2.3.7 The *FRR* of a *primary element* integral with a *fire separation* shall be no less than that of the *fire separation*.

2.3.8 Except as required by Paragraph 4.3.3, areas of *external wall* not permitted to be *unprotected areas* shall be rated for *fire* exposure from within a *firecell*.

2.3.9 Areas of *external wall* not permitted to be *unprotected areas* shall be rated for *fire* exposure from both sides equally where:

- a) Walls are within 1.0 m of the *relevant boundary*, or
- b) The *building height* is more than 10 m.
- c) DELIBERATELY LEFT BLANK

2.3.10 *Building elements* shall have an *FRR* of no less than that of any *building element* to which they provide support within the *firecell* or in any adjacent *firecell*

2.3.11 Structural framing members connected to *building elements* with an *FRR* shall be rated at no less than the elements to which they are connected, or alternatively their connections and supports shall be designed so that their collapse during *fire* will not cause collapse of the *fire* rated elements.

Applying insulation component in FRR

2.3.12 *Insulation ratings* shall apply to:

- a) All *fire separations*, except as noted in Paragraph 2.3.13, and
- b) Parts of *external walls* which are not permitted to be *unprotected areas*, and
- c) Parts of *external walls* which are within 2.0 m of an external *exitway* where it is a single *means of escape from fire* (see Paragraph 3.11.2).

2.3.13 *Insulation ratings* are not required to apply to:

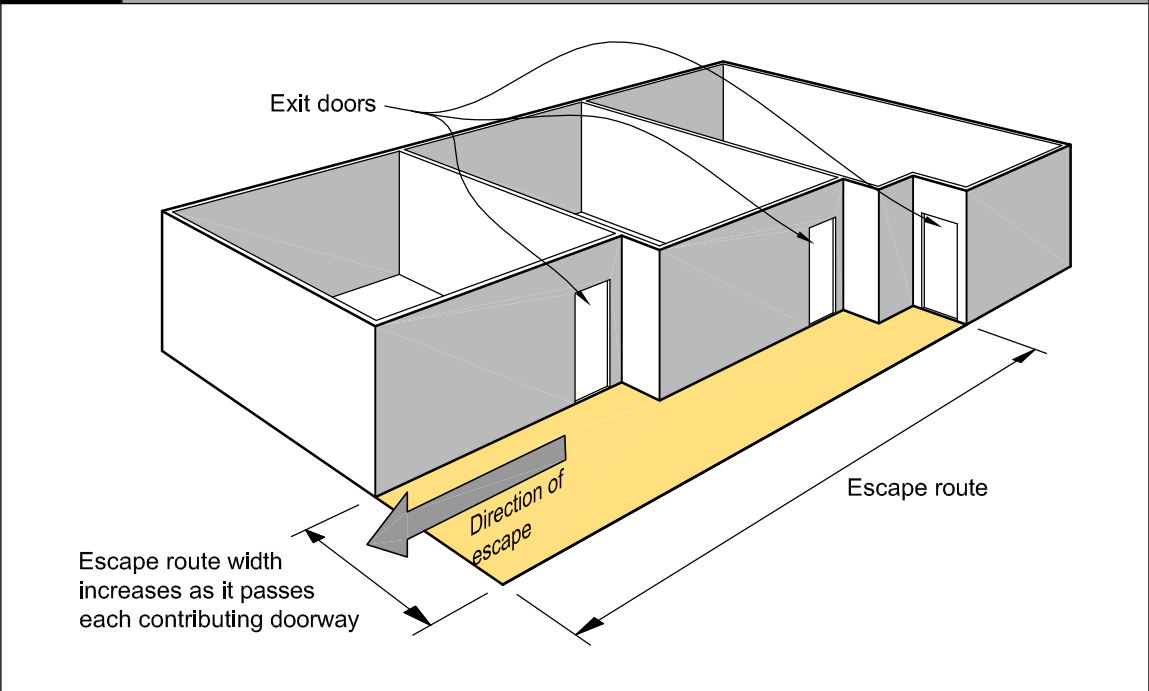
- a) Glazing installed in accordance with Paragraph 4.2, or
- b) All elements where sprinklers are installed throughout the *building* in accordance with either NZS 4541 or NZS 4515 as appropriate, or
- c) *Fire stops* in accordance with Paragraph 4.4.5, or
- d) *Fire dampers* and *damper blades* in accordance with Paragraph 4.16.12, or
- e) *Fire resisting glazing* in accordance with Paragraph 5.4.3.

Amend 2
Dec 2013

Amend 3
Jul 2014

Amend 2
Dec 2013

Figure 3.4 Increase in width for horizontal escape routes having a single direction of escape
Paragraph 3.3.2 f)



g) **Horizontal escape route with two directions of escape:** this shall have sufficient width for the full length of the route to allow for the *occupant load* from all contributing *occupied spaces*. However, this shall not apply if the requirements of Paragraph 3.7.13 e) are met for escape through adjacent *firecells*.

h) **Intermediate floors:** for *firecells* containing an *intermediate floor*, both the vertical and horizontal parts of the *open path escape route* shall be wide enough to take the full *occupant load* from all contributing *occupied spaces*.

i) **Vertical safe paths widths:** Vertical *safe paths* shall have minimum widths at any point determined only by the largest total *occupant load* passing that point in the direction of escape from:

- i) any single level (where not part of an *intermediate floor firecell*).
- ii) all levels in a *firecell* where it spans more than one level (i.e. *intermediate floors*).

Comment:

1. A stair may have more than one *firecell* entering it at any level. Here the combined occupancy entering the stair from all *firecells* should be used.
2. In vertical *safe paths* it is not necessary to provide for cumulative *occupant load* as the *escape route* passes each floor level provided those floor levels are separate *firecells*.

Amend 3
Jul 2014

j) DELIBERATELY LEFT BLANK

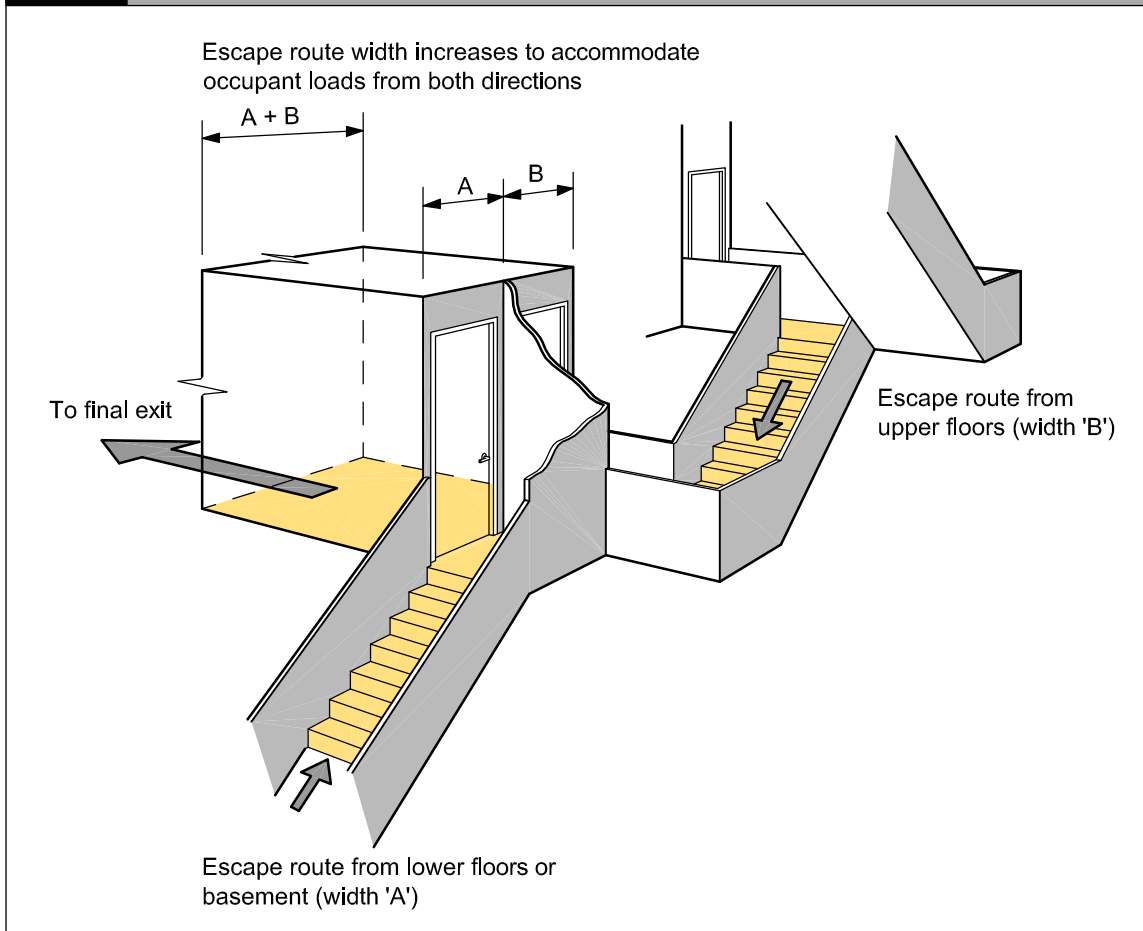
k) **Basements:** if an *escape route* from upper floors is joined at the level of a *final exit* by an *escape route* from a basement or lower floors, the *escape route* width at the point they combine shall be increased to accommodate the *occupant loads* from both directions (see Figure 3.5).

l) **Ladders:** the width requirements of Paragraph 3.3.2 b) do not apply to ladders where their use is permitted in this Acceptable Solution.

m) DELIBERATELY LEFT BLANK

Amend 3
Jul 2014

Figure 3.5 Escape routes from lower and upper floors
Paragraph 3.3.2 k)



Handrails and limitations to stairway widths

3.3.3 For safe evacuation on stairs, all stairways shall have at least one *handrail*. Furthermore:

- Stairways in escape routes wider than 1500 mm shall have *handrails* on both sides, and
- Stairways in escape routes wider than 2000 mm (see Figure 3.6) shall also be provided with intermediate *handrails* which are equally spaced and which provide a width not greater than 1500 mm for each section of the *stairway*.

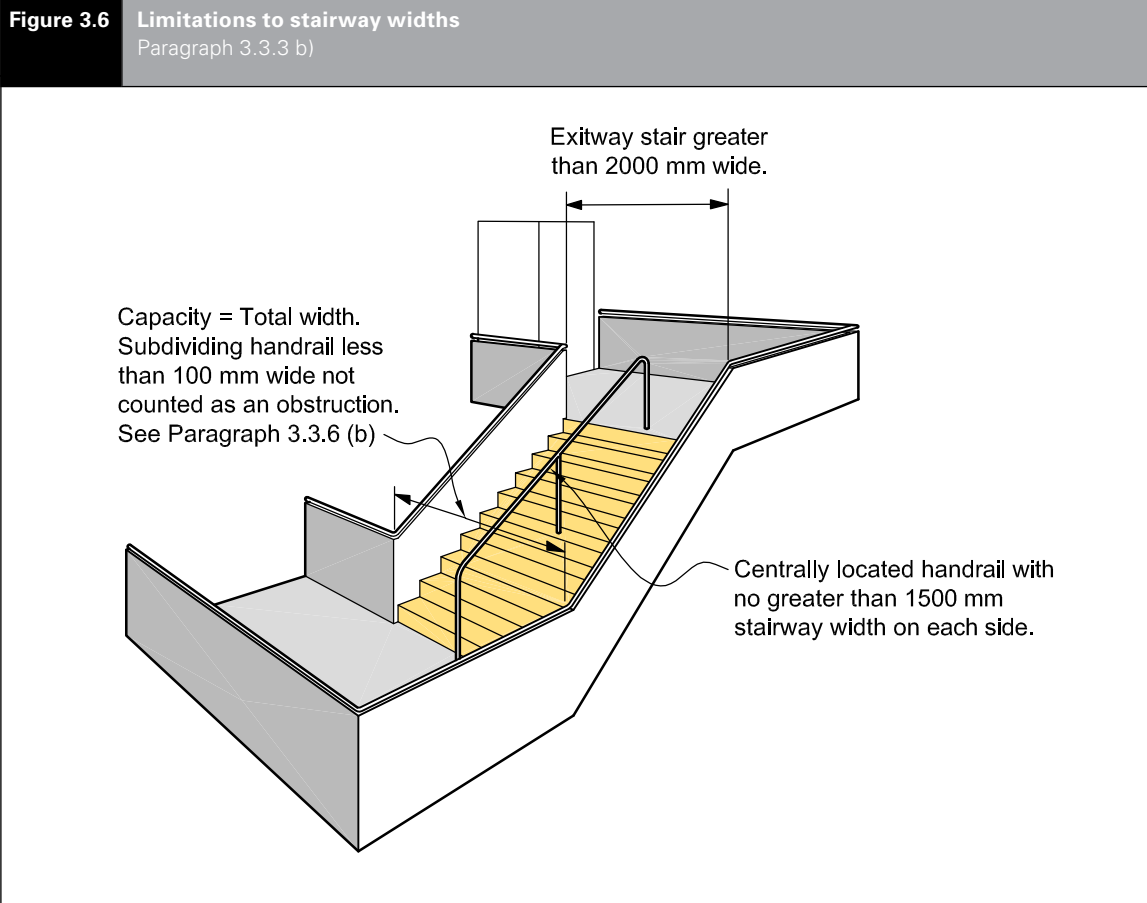
Comment:

Acceptable Solution D1/AS1 requires all *stairways* to have at least one *handrail*, and also requires *accessible* stairs to have *handrails* on both sides.

3.3.4 If the *escape height* exceeds 35 m, no more than 1500 mm shall be credited to the width of any *stairway* when calculating *stairway* capacity for an *escape route*.

Comment:

While the *stairway* may be wider than 1500 mm, this is the maximum width that can be used for calculating *stairway* capacity. You may need to provide additional *exitways* to carry the *occupant load*.



Curved and spiral stairs

3.3.5 If curved or spiral stairs form part of an *escape route*, the required width shall be that described as 'walking area' in Acceptable Solution D1/AS1.

Obstructions

3.3.6 Except as permitted by Paragraph 3.15.7, *escape routes* shall not be obstructed by access control systems such as revolving or automatic sliding doors, chains, turnstiles, sliding bars, crowd control barriers or similar devices.

The following minor obstructions are acceptable within the width of an *escape route*.

a) **Minor projections** complying with the requirements of Acceptable Solution D1/AS1 such as signs, switches, alarm sounders and similar projections.

b) **Handrails** complying with Acceptable Solution D1/AS1, projecting no more than 100 mm into the width, and *handrails* subdividing wide *stairways* that reduce the width by no more than 100 mm (see Paragraph 3.3.3), and

c) DELIBERATELY LEFT BLANK

d) **Door assemblies** which reduce the width of an *exitway* by no more than 125 mm when the door is fully open (see Figure 3.22).

Comment:

The 125 mm obstruction allows for projecting parts of the door frame assembly, the thickness of the door when open and similar acceptable obstructions.

3.4 Length of escape routes

3.4.1 An *escape route* may be any length, but:

- a) The lengths of *dead ends* and total *open paths* shall not exceed the distances given in Table 3.2, adjusted as necessary for:
 - i) reductions on *intermediate floors* (see Paragraph 3.4.3), and
 - ii) reductions on stairs and ladders (see Paragraph 3.4.4), and
- b) If the distance to the *final exit* exceeds the allowable length for the total *open path*, the remainder of the *escape route* shall be a *safe path*. (See Paragraph 3.9.7 for *safe path* length restrictions within a single floor level.)

Table 3.2 Travel distances on escape routes for risk group WB

| | No system and Type 2 system | Type 3 system (only where required by Paragraph 2.2.1) | Type 4 system | Type 6 system | Type 7 system |
|--|-----------------------------|--|---------------|---------------|---------------|
| <i>Dead end open path</i> | 25 m | 35 m | 50 m | 50 m | 75 m |
| <i>Total open path</i> | 60 m | 75 m | 120 m | 120 m | 150 m |
| <p>If <i>open path</i> length increases for smoke detectors are being applied, where Acceptable Solution F7/AS1 allows heat detectors to be substituted for smoke detectors, not less than 70% of the <i>firecell</i> shall be protected with smoke detectors. Heat detectors cannot be substituted for smoke detectors in <i>exitways</i>.</p> <p>If smoke and heat detection systems are installed in order to extend permissible travel distance in accordance with this table and are not a requirement of Paragraph 2.2.1 then Fire Service connection is not required.</p> | | | | | |

Errata 1
Feb 2013

Amend 3
Jul 2014

Open paths

3.4.2 When determining *open path* lengths, including any *dead end*, the following shall apply:

- a) **Start point:** the length shall be measured from no more than 1.0 m from the most remote point in a space.
- b) **Multiple risk groups:** the lengths specified in Table 3.2 shall apply to *risk group WB*. When other *risk groups* with different allowable maximum *open path* lengths use the same *open path*, the *risk group* with the shortest maximum length shall apply.
- c) **Furniture and fittings:** allowance shall be made for the *travel distance* around obstructions such as furniture, fittings and office equipment located in the *open path* (see Figure 3.7 (a)). If the location of such obstructions is not known, the allowable *travel distance* shall be taken as the length plus the width of the space (see Figure 3.7 (b)).
- d) **Multiple escape routes:** if two or more *escape routes* are required, *open path* lengths from any point on a floor to no fewer than two exits from the *firecell* shall not exceed the lengths specified in Table 3.2.
- e) DELIBERATELY LEFT BLANK
- f) **Termination:** an *open path* ends either at:
 - i) the start of an *exitway*, or
 - ii) a *final exit*, or
 - iii) the point where the *escape route* passes into an adjacent *firecell* on the same level (see Paragraph 3.7.13).

3.7 Special cases of open paths

Ramps

3.7.1 Where stairs are not used, changes in level on an *escape route* shall be formed as ramps and shall comply with Acceptable Solution D1/AS1.

Separate tenancy

3.7.2 *Open paths* shall only pass through spaces containing different tenancies if doors leading to an *exitway* or *final exit* can be readily opened by all persons for whom the *open path* is their *escape route*.

3.7.3 THIS PARAGRAPH DELIBERATELY LEFT BLANK

3.7.4 THIS PARAGRAPH DELIBERATELY LEFT BLANK

3.7.5 THIS PARAGRAPH DELIBERATELY LEFT BLANK

3.7.6 THIS PARAGRAPH DELIBERATELY LEFT BLANK

3.7.7 THIS PARAGRAPH DELIBERATELY LEFT BLANK

3.7.8 THIS PARAGRAPH DELIBERATELY LEFT BLANK

3.7.9 THIS PARAGRAPH DELIBERATELY LEFT BLANK

3.7.10 THIS PARAGRAPH DELIBERATELY LEFT BLANK

Table 3.3: This table is not required for this Acceptable Solution.

3.7.11 THIS PARAGRAPH DELIBERATELY LEFT BLANK

3.7.12 THIS PARAGRAPH DELIBERATELY LEFT BLANK

Passing into an adjacent firecell

3.7.13 If an *open path* passes through a number of *fire separations* it is permitted to continue as the same *open path* provided the cumulative *travel distance* does not exceed the permitted distance specified in Table 3.2.

An *open path* may pass into an adjacent *firecell* on the same level (see Figure 3.15) and recommence as a new *open path* provided that:

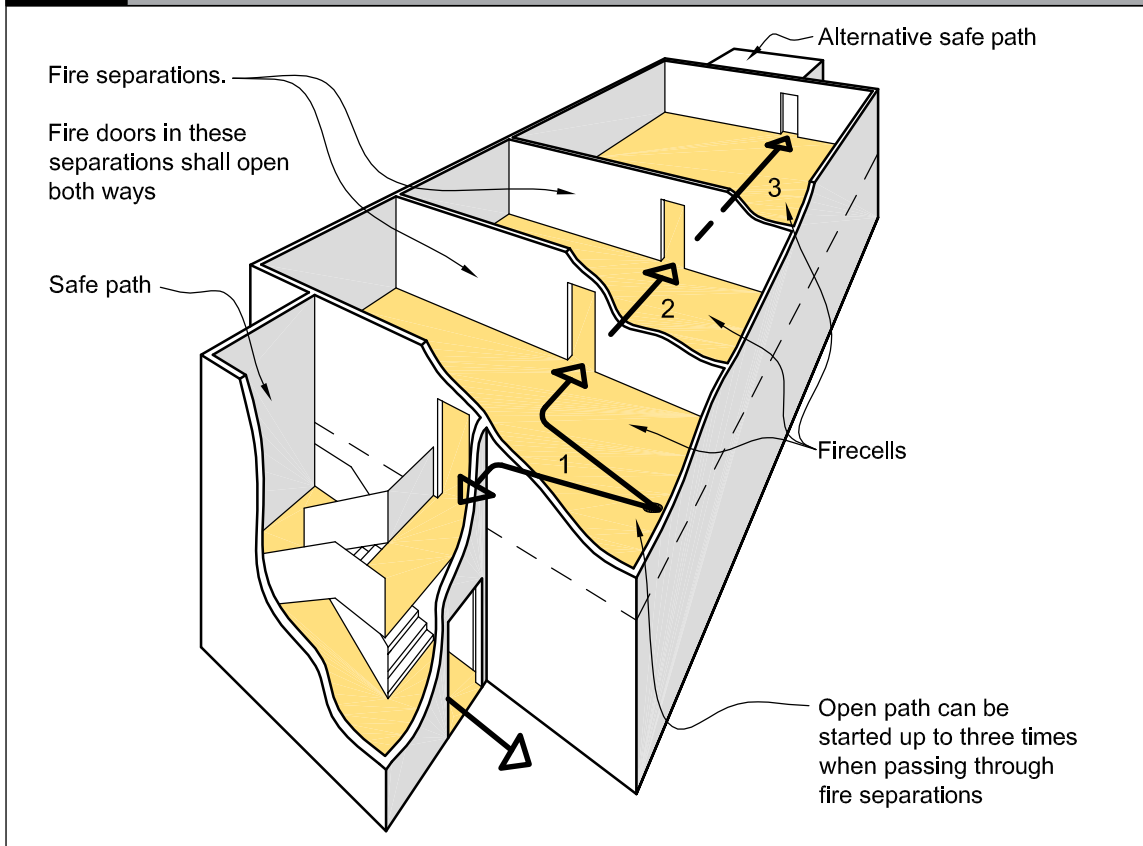
- a) All *firecells* on the *escape route* have no fewer than two directions of escape, separated as required by Paragraph 3.6.2, and
- b) Adjacent *firecells* into which evacuation may take place have a floor area sufficient to accommodate not only their own occupants, but also the occupants from the adjacent *firecell*. This shall be calculated on the basis of the *occupant load* of the two *firecells*, and
- c) Each *firecell* has at least one other *escape route* independent of the route into the adjacent *firecell*. This other route may be by way of a *final exit* or via a third *firecell* provided that the exit from that third *firecell* is independent of exits from the other two *firecells*, and
- d) The *escape route* does not pass through more than three *fire separations* before entering an *exitway* or *final exit*, and
- e) The *escape route* width meets the requirements of Paragraph 3.3.2 for the *firecell* on the *escape route* that has the greatest *occupant load*.

Amend 3
Jul 2014

Comment:

1. *Open path* lengths in each *firecell* are controlled by the requirements of Paragraph 3.4.2 for that *firecell*.
2. Refer to Paragraph 3.15.3 to determine whether doors between *firecells* need to be hung to swing both ways because escape may be in either direction, and Paragraph 3.15.9 for *hold-open device* requirements.

Figure 3.15 Open path passing into adjacent firecells
Paragraphs 3.7.13 and 4.16.9



Escape via an intermediate floor

3.7.14 An *open path* may pass from a *firecell* on to an *intermediate floor* and recommence as an *open path* provided that:

- Where two or more *escape routes* are required from that *firecell*, only one *escape route* shall be via the *intermediate floor*, and
- The *intermediate floor* is served by at least two *escape routes*, separated as required by Paragraph 3.6.2, and terminating at separate *firecells*, *exitways* or *final exits* at the same level as the *intermediate floor*, and
- The *intermediate floor open path* lengths shall not exceed the requirements of Paragraph 3.4.

3.8 Dead ends

No more than 50 occupants

3.8.1 A *dead end* shall not serve an *occupant load* greater than 50.

Ladders

3.8.2 The *escape route* from a *dead end* may be a ladder complying with Acceptable Solution D1/AS1, if it serves only a support function or provides the same function in support of other *risk groups*, and only if the *occupant load* does not normally exceed four. Ladders are not permitted as *escape routes* in any other circumstances (see also Paragraph 3.4.4).

Comment:

This provision is principally for cat-walks used intermittently in industrial plants and similar situations.

3.9 Exitways

3.9.1 Exitways consist of *smoke lobbies* and *safe paths*.

Smoke lobby floor area

3.9.2 If a *smoke lobby* is required preceding a vertical *safe path* (see Paragraph 3.5.1 and Figure 3.16), its floor area shall be calculated for the *occupant load* using that *smoke lobby* by assuming that:

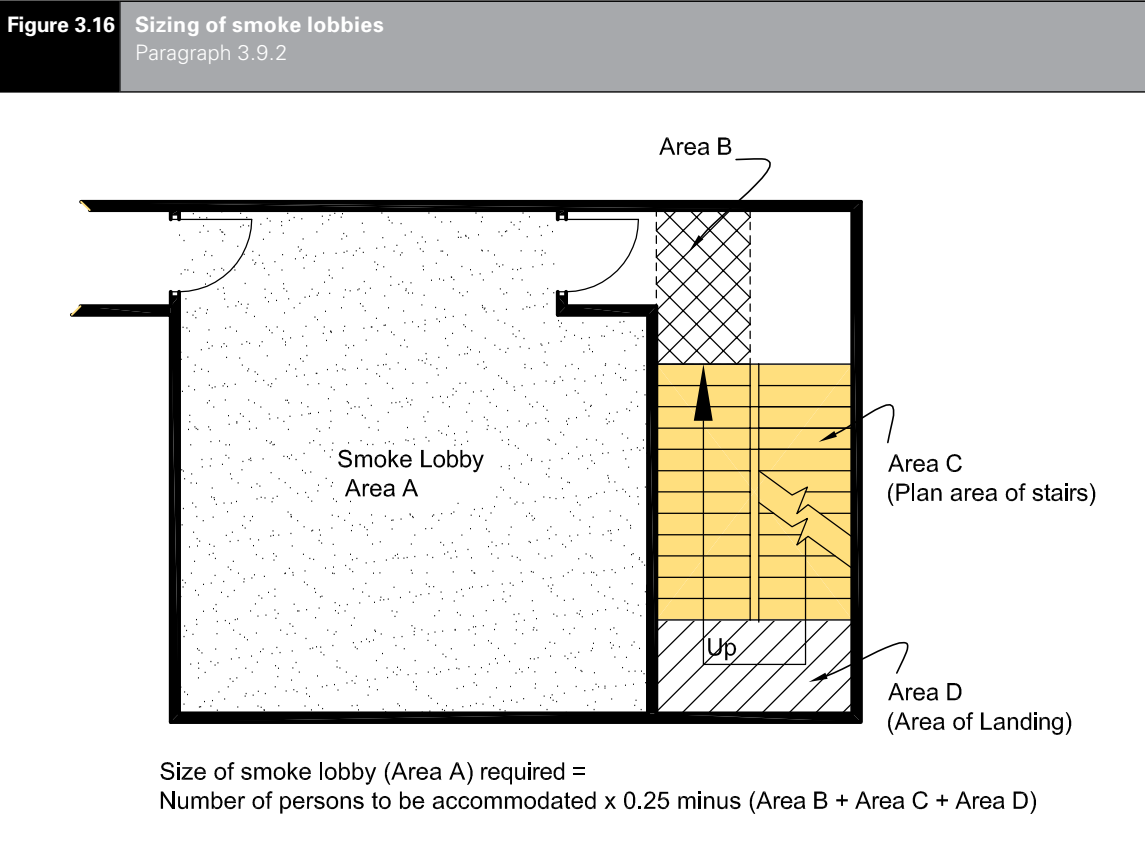
- a) Part of the *occupant load* will be accommodated in the *stairway* vertical *safe path* between the level being considered and the next level in the direction of escape, with the remaining occupants accommodated in the *smoke lobby*, and

- b) The occupant density for calculating the required holding area is 0.25 m² per person in the *stairway*. The floor area shall be taken as the area of the first landing plus the plan area of the flights of stairs between the two floor levels plus the areas of any intermediate landings. Additional space shall be provided for door swings.

Comment:

This paragraph does not call up a requirement for a *smoke lobby*, but when they are required by other parts of this Acceptable Solution, this Paragraph states how *smoke lobbies* are to be sized.

3.9.3 THIS PARAGRAPH DELIBERATELY LEFT BLANK



Amend 3
Jul 2014

Safe paths

3.9.4 Other than where Paragraph 3.17.3 applies *escape routes* from *firecells* shall enter directly into an *exitway* or *final exit*.

3.9.5 *Safe paths* shall be separated from each other, and from all spaces by:

- a) *Fire separations*, or
- b) If they are external to the *building*, by distance or appropriate *construction* (see Paragraph 3.11).

3.9.6 THIS PARAGRAPH DELIBERATELY LEFT BLANK

Safe path length restrictions

3.9.7 There is no limit on the length of a vertical *safe path*. Horizontal *safe paths* shall be no longer than specified in Table 3.4

Safe path termination

3.9.8 Horizontal *safe paths* shall terminate at any of the following:

- a) The entrance to an internal *stairway* which is a separate *safe path*, or
- b) An external balcony leading to either an open or enclosed *stairway*, or
- c) An opening in an *external wall* which enters on to a bridge leading to an open or enclosed *stairway*, or
- d) A *final exit*.

Comment:

Long *safe path* corridors may be required to be subdivided by *smoke separations* (see Paragraph 4.12).

A vertical *safe path* may be required to have mid-height *smoke separation* (see Paragraph 4.9.7).

Safe path separation and glazing

3.9.9 The vertical and horizontal portions of internal *safe paths* shall be separated at every floor level by *fire separations* and *fire doors* with smoke control capability.

3.9.10 Glazing in *safe paths* shall comply with the requirements of Paragraph 4.2.

3.9.11 THIS PARAGRAPH DELIBERATELY LEFT BLANK.

3.10 Control of exitway activities

3.10.1 *Exitways* shall not be used for:

- a) Any storage of goods, solid waste or solid waste containers, or
- b) For entry points to solid waste chutes, or
- c) The location of furniture or other *combustibles*, or
- d) Storage of cloaks or linen, or
- e) A cleaner’s cupboard not *fire separated* from the *exitway*, or
- f) The location of an electrical switchboard or similar, or
- g) Any activity (other than as permitted by Paragraph 3.10.2).

3.10.2 Some activities are permitted in an *exitway* if:

- a) An alternative *escape route* is available from all *firecells* served by the *safe path* in which the activities occur, and

Table 3.4 Travel distances on horizontal safe paths

| | No system and Type 2 system | Type 4 system | Type 6 system | Type 7 system |
|------------------------|-----------------------------|---------------|---------------|---------------|
| Single direction | 25 m | 50 m | 50 m | 80 m |
| Two or more directions | 180 m | Unlimited | Unlimited | Unlimited |

If *open path* length increases for a Type 4 system are being applied, where Acceptable Solution F7/AS1 allows heat detectors to be substituted for smoke detectors, not less than 70% of the *firecell* shall be protected with smoke detectors. It is not permitted to substitute the smoke detection in *exitway*.

If smoke and heat detection systems are installed in order to extend permissible travel distance in accordance with this table and are not a requirement of Paragraph 2.2.1 then Fire Service connection is not required.

Amend 3
Jul 2014



- b) For *building occupant loads* up to 500, a Type 4 system is installed, and for *occupant loads* exceeding 500 a Type 7 system is installed. These systems shall be installed in the *exitway* and connected to alerting devices installed throughout the *building*, and
- c) The *escape route* is not impeded by the activity or the occupants involved in that activity, and
- d) Those activities:
 - i) are visible to users of the *exitway*, except in the case of *sanitary fixtures*
 - ii) exist only to provide support functions to the activities of the *risk group* served by the *exitway*
 - iii) occupy a total floor area of not more than 6.0 m².

Comment:

Permitted activities include but are not limited to a reception counter (but not an associated office) and toilet facilities.

Amend 3
Jul 2014

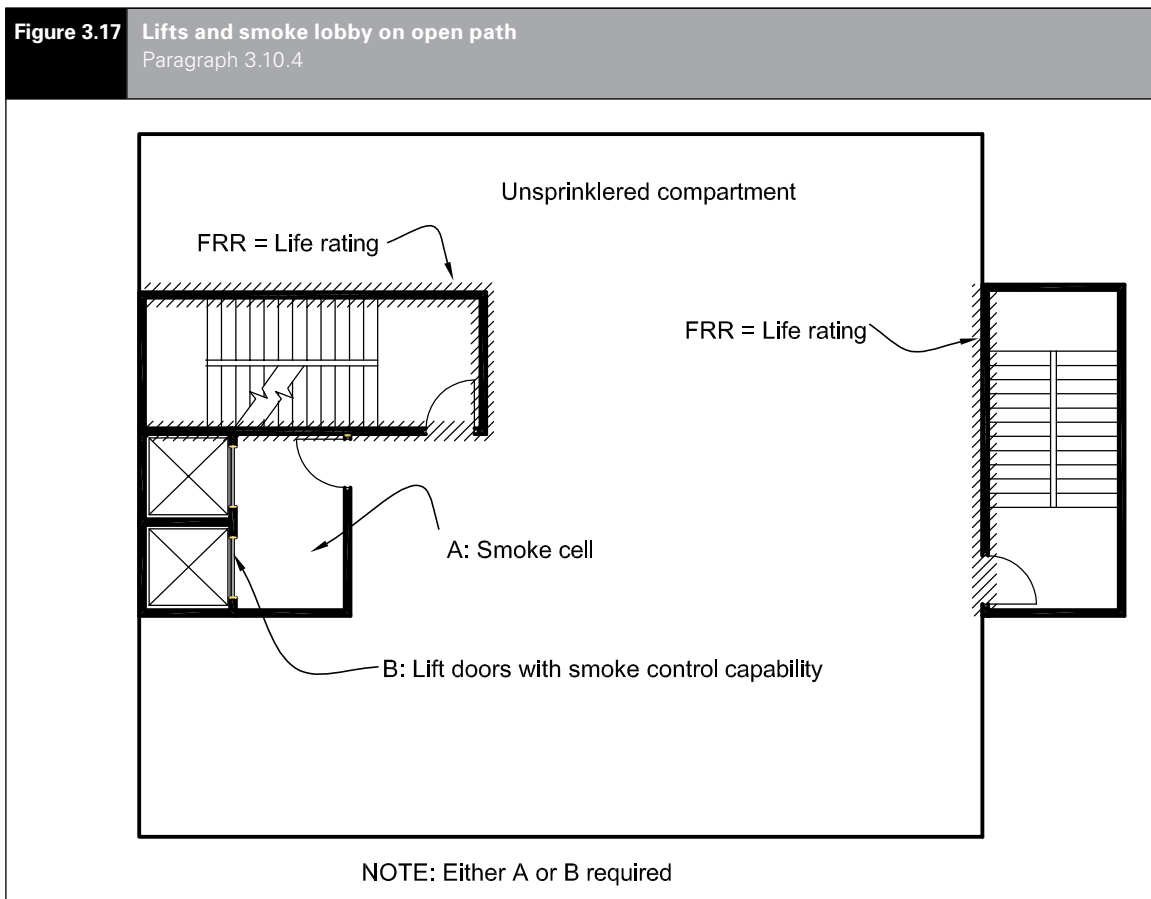
Lifts

3.10.3 A passenger lift, but not a goods lift, may be located in a vertical *safe path* containing a *stairway* provided the following conditions are satisfied:

- a) The lift shaft and all its openings are located entirely within a single *firecell* containing the vertical *safe path*, and
- b) Passenger access into and from the lift takes place entirely within the *safe path*, and
- c) No other activity occurs within the vertical *safe path*, and
- d) The lift machine room is a separate *firecell*, and the openings for lift ropes through the *fire separation* are as small as practicable, and any *penetrations*, such as for electrical cables, are *fire stopped*. (See Paragraph 4.4 for *fire stopping*.)

3.10.4 Lift landings located in *open paths* (see Figure 3.17) shall either be within a *smokecell* separated from all other areas or have lift landing doors with smoke control capability.

Figure 3.17 Lifts and smoke lobby on open path
Paragraph 3.10.4



This requirement does not apply if the *building* is protected with a Type 7 system or the lift shaft has a pressurisation system designed to AS/NZS 1668.1. Lift doors shall be as specified in Paragraphs 4.16.3 and 4.16.11.

Amend 3
Jul 2014
Amend 2
Dec 2013

3.10.5 In situations not described in Paragraphs 3.10.3 or 3.10.4 lift landings in unsprinklered *buildings* shall either open into a *smoke lobby* or the lift shaft shall be provided with a pressurisation system designed to AS/NZS 1668.1. Any *smoke lobby* shall not be part of the horizontal *safe path* (i.e. the horizontal *safe path* shall not pass through the *smoke lobby*). See Figure 3.17A.

Amend 3
Jul 2014

3.11 External escape routes

3.11.1 If an *escape route* enters a space exposed to the open air (e.g. an open *stairway*, a balcony, across a roof or a ground level path), it shall meet the requirements of a *safe path* between that point and the *final exit*. *Safe path* separation requirements shall be achieved by providing either distance or *fire rated* construction between the *escape route* and *adjacent firecells*, as specified in Paragraphs 3.11.2 to 3.11.6.

Amend 3
Jul 2014

Amend 3
Jul 2014

Comment:

Balconies with one direction of escape comply with the requirements of a *safe path* if the *external wall* beside the balcony has no *unprotected areas* or the balcony is large enough to allow separation by distance from the *external wall* (see Paragraph 3.11.2). Balconies with two directions of escape from all *firecell* exits are also considered to be *safe paths*, even if the adjacent *external wall* has 100% *unprotected area*.

Separation by distance

3.11.2 Separation by distance shall be achieved by:

- a) If there is only one direction of escape, roofs and *external walls* with no *unprotected areas* closer to an external *escape route* than:
 - i) 2.0 m if unsprinklered (see Figure 3.18), or
 - ii) 1.0 m if all *firecells* passed by the external *escape route* are sprinklered, or

Comment:

This provision is to limit heat radiation exposure to occupants who have only one direction of escape. Therefore the limiting distances apply horizontally to both sides of the *escape route*.

- b) Locating the *escape route* so that it diverges from *external walls* (see Paragraph 3.11.5 a)), or
- c) Providing alternative directions of escape from the point where the *escape route* passes through an *external wall* and becomes an external *escape route* (see Paragraph 3.11.5 b)).

3.11.3 THIS PARAGRAPH DELIBERATELY LEFT BLANK

3.11.4 If the distance separating *external walls* or roofs from an external *dead end escape route* is less than permitted by Paragraph 3.11.2, those walls and roofs shall comply with the *FRR* requirements of Paragraphs 5.3 and 5.7.3 to 5.7.5. Glazing shall comply with Paragraph 4.2.

3.11.5 For an *escape route* which passes through an opening in an *external wall*, parts of the *external wall* need not be *fire rated* if:

- a) The direction of escape to a single *final exit* diverges from the *external wall* at an angle of no less than 45° in plan, or
- b) The directions of escape to alternative *final exits* diverge from each other at an angle of no less than 90° in plan and the *escape routes* subsequently do not both pass the same *firecell* (other than the *firecell* from which they originated).

Amend 3
Jul 2014

Comment:

See Paragraph 3.11.1 to determine whether *fire rating* of *external wall* is required.

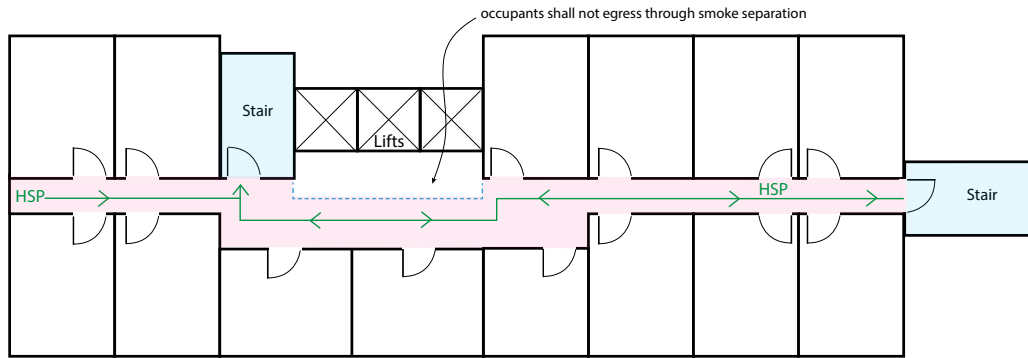
- c) DELIBERATELY LEFT BLANK
- d) For shopfronts, if the exit is onto the footpath it is not required to be *fire rated*.

Comment:

The relaxation of *FRR* requirements does not apply where *fire rated construction* is necessary due to the proximity of a *relevant boundary* (see Paragraph 5.3).

Amend 3
Jul 2014

Figure 3.17A Lifts and smoke separations when landing on an unsprinkered horizontal safe path
Paragraph 3.10.5



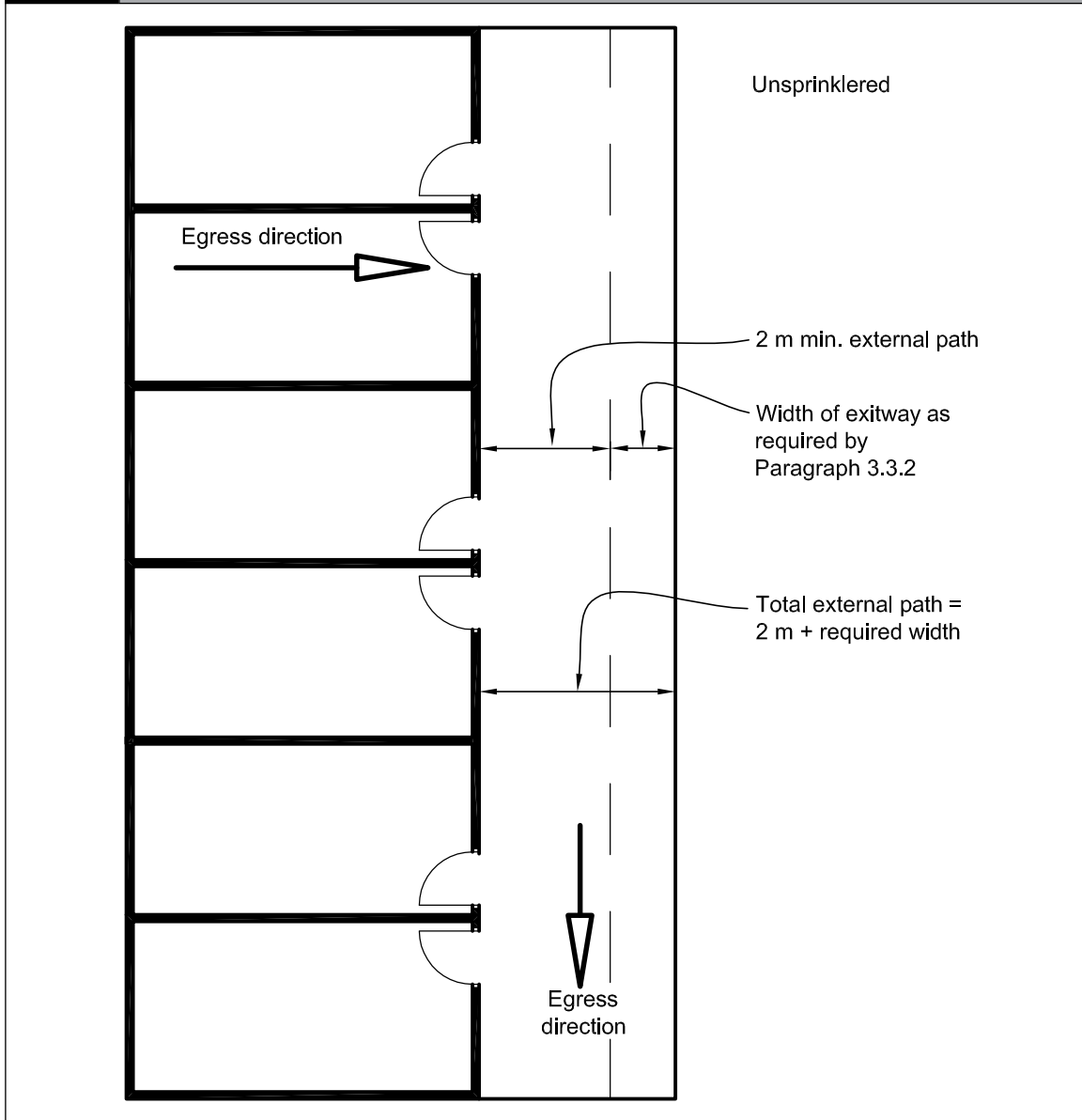
- either smoke separation to be provided or lift pressurisation system
- lift smoke separation to be separate from escape route

HSP = Horizontal safe path

Amend 3
Jul 2014

This page deliberately left blank

Figure 3.18 External escape routes
Paragraph 3.11.2



Separation by fire rated construction

3.11.6 Except where the separation distance requirements of Paragraph 3.11.2 are achieved:

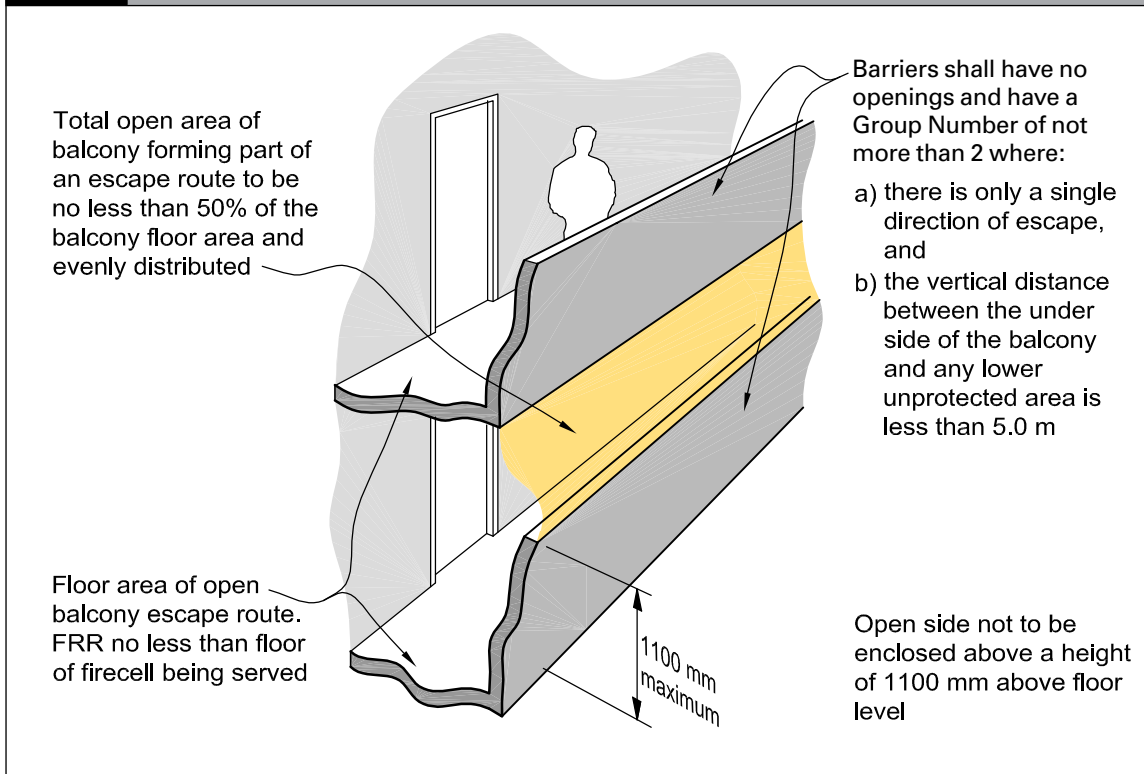
- a) *External walls* and roofs adjacent to external escape routes shall comply with the *FRR* requirements of Paragraphs 5.3 and 5.7 and shall have no *unprotected areas*, except that glazing for *safe paths* complying with Paragraph 4.2 shall be permitted, and

- b) If the *escape route* is a balcony with a single direction of escape, and the vertical distance between the underside of the balcony and the closest *unprotected area* in the *external wall* below is less than 5.0 m (see Figure 3.19), balcony barriers shall:
 - i) have no openings, and
 - ii) be protected with a material having a *Group Number* of no greater than 2, and

Comment:

See Verification Method C/VM2 Appendix A for method of assigning the *Group Number*.

Figure 3.19 Open balconies
Paragraphs 3.11.6 and 3.11.7



- c) If the vertical separation between the undersides of an external *escape route* and *unprotected areas* in the *external wall* below is less than 5.0 m:
- i) the floor of an external *escape route* closer to an *external wall* than required by Paragraph 3.11.2 shall have an *FRR* of no less than required by Paragraph 2.3, and

Comment:

If the *escape route* is a balcony with two directions of escape, the *external wall* need not be a *fire separation* and the requirements for the floor of the balcony c) i) and the balcony b) do not apply.

- ii) treads and risers of stairs on external *escape routes* shall either be *constructed* from a material with a critical radiant flux of no less than 2.2 kW/m² or shall be protected on the underside with a material having a *Group Number* of no greater than 2, and
- d) If the *escape route* comprises external horizontal and internal vertical *safe paths*, a *smoke separation* shall be provided between them.

Ventilation openings

3.11.7 The open area of a balcony or bridge shall be no less than 50% of the balcony floor area, and shall be evenly distributed along the open sides and any approach ramp (see Figure 3.19). Where an *escape route* on a balcony is served by an open *stairway*, similar ventilation shall be provided on the *stairway*. Open sides shall not be enclosed above a height of 1100 mm from the floor, except that a fixed open grille may be used if it provides the required free air space.

Barriers

3.11.8 Changes in *exitway* floor level other than in the direction of travel shall have barriers that comply with Acceptable Solution F4/AS1.

3.11.9 THIS PARAGRAPH DELIBERATELY LEFT BLANK

3.11.10 THIS PARAGRAPH DELIBERATELY LEFT BLANK

3.12 Final exits

Final exit separation

3.12.1 *Final exits* which open onto the same *safe place* shall be spaced no closer than 5.0 m centre to centre. This applies to both internal and external *exitways*.

Comment:

This provision allows quick dispersal and reduces the risk of a crowd blocking a *final exit*.

3.13 Single escape routes

3.13.1 Single *escape routes* shall only be permitted if:

- a) The *open path* length does not exceed the limits specified in Table 3.2, and
- b) The total *occupant load* from all *firecells* on each level served by the *escape route* is no greater than 50, and
- c) DELIBERATELY LEFT BLANK
- d) The *escape height* is no greater than:
 - i) 10 m if unsprinklered, or
 - ii) 25 m if sprinklered, and
- e) In *buildings* with two or more floors, the vertical *safe path* is preceded by a *smoke lobby* on all floors except the topmost floor (refer to Paragraph 3.9.2 for sizing of the *smoke lobby*), and
- f) There are no more than 2 *basement* levels below ground and the vertical *safe path* from the *basement* levels is preceded by a *smoke lobby* (see Figure 3.11).

3.13.2 THIS PARAGRAPH DELIBERATELY LEFT BLANK

3.13.3 THIS PARAGRAPH DELIBERATELY LEFT BLANK

3.13.4 THIS PARAGRAPH DELIBERATELY LEFT BLANK

3.13.5 THIS PARAGRAPH DELIBERATELY LEFT BLANK

3.14 THIS PARAGRAPH DELIBERATELY LEFT BLANK

3.15 Doors subdividing escape routes

Door closers and latching

3.15.1 Except as permitted by Paragraph 3.15.7 (revolving doors, automatic doors and access control systems), doors on *escape routes* shall satisfy the following requirements:

- a) They shall be hinged or pivoted on one vertical edge only, except that sliding doors may be used where the space, including an *exitway*, has an *occupant load* of less than 20. Roller shutter doors or tilt doors shall not be used as *escape route* width except in an intermittently *occupied space* where the roller shutter door is the only *access route* and is open at all times the space is occupied, and
- b) *Fire* and *smoke control doors* shall be self-closing, and the self-closing device shall either be:
 - i) active at all times, or
 - ii) activated by releasing a *hold-open device* in response to operation of a smoke detector (see Paragraph 3.15.10), or
 - iii) a self-closer that is activated by operation of a smoke detector but allows the door to swing freely at other times. The smoke detector requirements shall be the same as for a *hold-open device* (see Paragraph 3.15.10), and
- c) If such doors are required to be secure, they shall be fitted with simple fastenings that can be readily operated from the direction approached by people making an escape complying with Paragraph 3.15.14, and
- d) They shall not be fitted with any locking devices unless these comply with Paragraph 3.15.2, and
- e) They shall have door handles which satisfy the requirements of Acceptable Solution D1/AS1 for use by *people with disabilities*, and
- f) They shall be *constructed* to ensure that the forces required to open these doors do not exceed those able to be applied:
 - i) with a single hand to release the latch (where fitted), and

- ii) using two hands to set the door in motion, and
- iii) using a single hand to open the door to the minimum required width.

Comment:

These requirements are based on the force requirements of Appendix C C6.1.3.

Locking devices

3.15.2 If the *building* is occupied, locking devices shall:

- a) Be clearly visible, located where such a device would be normally expected and, in the event of *fire*, designed to be easily operated without a key or other security device, and allow the door to open in the normal manner.

If the operation of a locking device is unusual, such as the pressing of a button close to the door, it shall have signage that complies with NZBC F8.3.1, and

Comment:

Examples of unacceptable locking or security devices are card access and keypad locks that are not interfaced with the *fire* alarm and detection systems.

- b) Not prevent or override the direct operation of panic fastenings fitted to any door
- c) If they are of an electromechanical type, they shall, in the event of a power failure or door malfunction, either:
 - i) automatically switch to the unlocked (fail-safe) condition, or
 - ii) be readily opened by an alternative method satisfying the requirements of Paragraph 3.15.2 a), and

- d) If the *escape height* is greater than 25m occupants in the vertical *safe path* shall be able to re-enter a floor at a maximum interval of 4 floors. Doors required to be unlocked from the *safe path* side may be unlocked at all times or only when the fire alarm is activated. Doors designated as available for entry shall have signage indicating their status.

Comment:

One way of ensuring compliance with Paragraph 3.15.2 is to develop a building management plan.

This Acceptable Solution specifies that the greatest distance between unlocked stair doors is 3 floors. This is to ensure that:

- a) In multi stair *buildings* people escaping down a stair are able to move from one stair to another and can continue their escape along an alternative route via a route across a floor if one stair becomes smoke-logged or unusable for any other reason.
- b) In single stair *buildings*, people are able move out of the stair and wait for rescue by emergency services within the floor.

The requirement applies to the whole height of the vertical *safe path*, meaning that once required on a *safe path* greater than 25 m, *escape height* floors between 25 m and ground also have to comply. The doors may be locked during normal occupation but must be available upon activation of the fire alarm.

Amend 2
Dec 2013

Amend 3
Jul 2014

Amend 2
Dec 2013

Direction of opening

3.15.3 Doors on *escape routes* shall be hung to open in the direction of escape. However, this is not required if the number of occupants of spaces with egress using the door is no greater than 50. If escape may be in either direction, doors shall swing both ways. For manual sliding doors, see Paragraph 3.15.1.

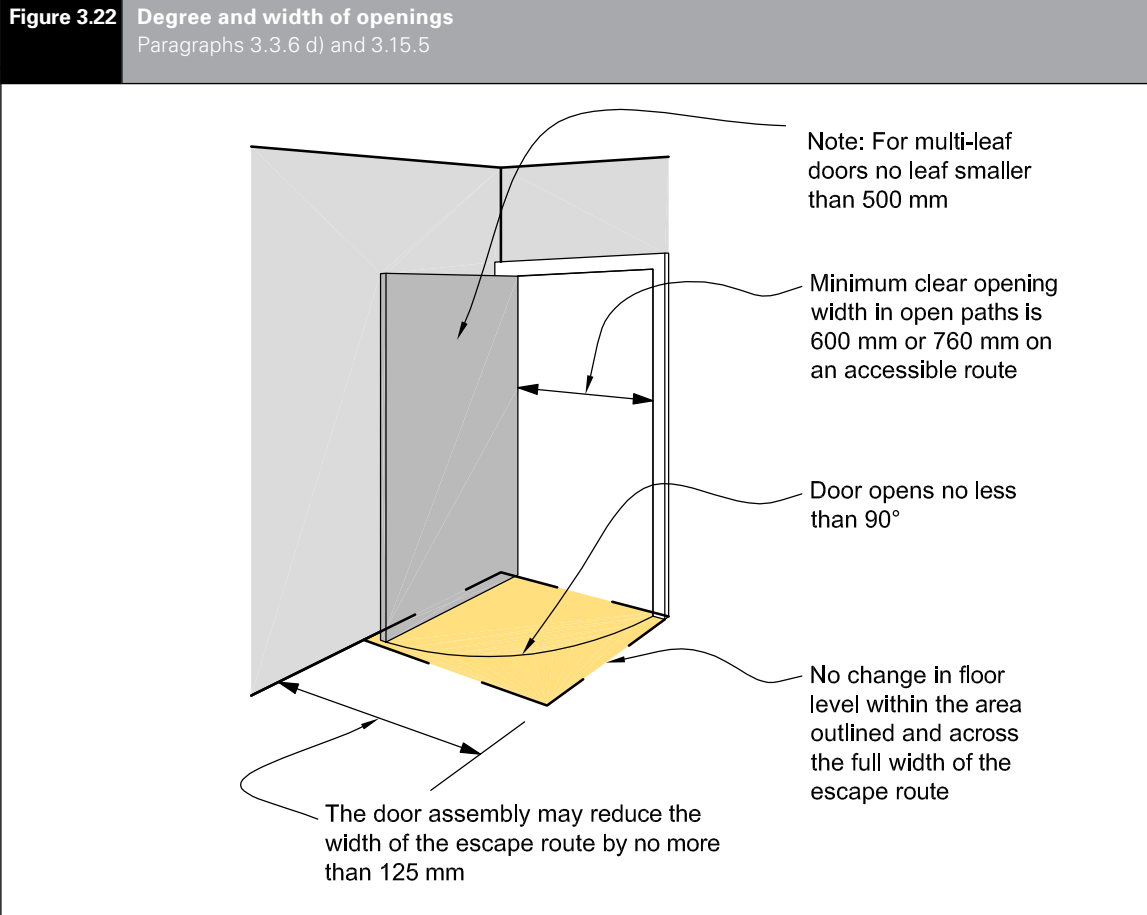
3.15.4 THIS PARAGRAPH LEFT DELIBERATELY BLANK

Degree and width of opening

3.15.5 Doors on *escape routes* (see Figure 3.22) shall satisfy the following requirements:

- a) In *open paths*, provide an unobstructed opening width of no less than 760 mm and, when multi-leaf, have no single leaf less than 500 mm wide. The minimum door opening width may be reduced to 600 mm if it is not required to be an *accessible route*, and
- b) Within *exitways* (including entry and *final exit* doors), reduce the minimum *exitway* width required by Paragraph 3.3 by no more than the 125 mm allowed under Paragraph 3.3.6 d) to:

Amend 3
Jul 2014



Errata 1
Feb 2013

- i) 725 mm into horizontal *safe paths*, or
- ii) 875 mm within horizontal *safe paths* and in vertical *safe paths*, and
- c) Open no less than 90°, and
- d) Open onto a floor area which:
 - i) extends for a distance of no less than the arc of the door swing, and
 - ii) is at the same level on both sides of the door for the full width of the *escape route*, and

Comment:

A 20 mm threshold weather-stop is acceptable on external doors (see Acceptable Solution D1/AS1).

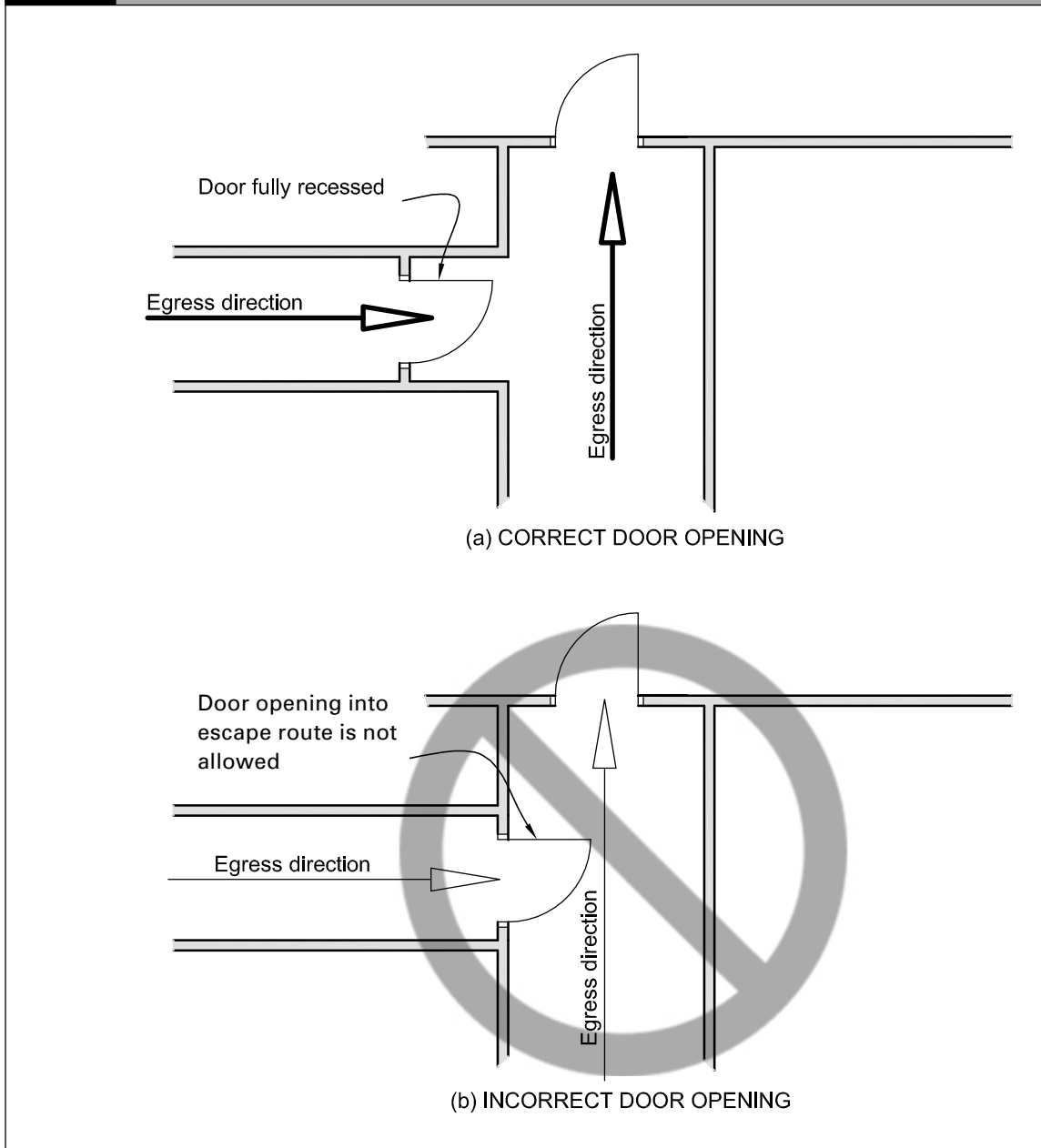
- e) When opened, not cause the door swing to obstruct the minimum required width of any *escape route*. For example, doors which open onto a corridor used as an *escape route* shall not obstruct the minimum required width of that *escape route* (see Figure 3.23).

Vision panels

3.15.6 Vision panels shall be provided on doors which:

- a) Are hung to swing both ways, or
- b) Lead into, or are within, *exitways* that swing in the direction of escape, or
- c) Subdivide corridors used as *escape routes*.

Figure 3.23 Door opening
Paragraph 3.15.5 e)



Revolving doors, automatic doors and access control systems

3.15.7 Revolving doors (see Figure 3.24 a)), automatic doors (of all types) and access control systems shall:

- a) Not be allowed across an *escape route* at any point leading into or within an *exitway*, but
 - i) automatically opening and remaining open, or
- b) Be allowed in an *open path* or at a *final exit*, provided that in the event of a power failure or malfunction, the doors or access control systems continue to provide a safe *means of escape from fire* without reducing the required width by:

4.13 Floors

4.13.1 Floors in *buildings* shall be *fire separations* (see Figure 4.6) except if any of the following conditions are satisfied:

- a) The floor is an *intermediate floor* within a *firecell* (see Paragraph 4.13.4 for the *FRR* requirement), or
- b) The floor is the lowest floor above an unoccupied subfloor space, and complies with Paragraph 4.14.1.

4.13.2 Floors only need to be rated from the underside (see Figure 4.6). The *FRR* of a floor shall be that rating applicable to the *firecell* directly below the floor.

Intermediate floors

4.13.3 THIS PARAGRAPH DELIBERATELY LEFT BLANK

4.13.4 *Intermediate floors* and stairs used as access and their supporting *primary elements* within the *firecell* shall have *FRRs* of at least 30 minutes.

4.13.5 *Intermediate floors* shall satisfy the following conditions:

- a) If there are two or more separate *intermediate floors*, the levels of those floors above the *firecell* floor differ by no more than 1.0 m, and
- b) The total combined *occupant load* on the *intermediate floors* is not greater than 100, and
- c) The total combined area of the *intermediate floors* is no greater than specified in Paragraph 4.13.6.

4.13.6 For occupancies other than warehouses with storage height over 3.0 m, the total combined area of the *intermediate floors* within the *firecell* shall be the lowest of:

- a) 20% of the area of the *firecell* floor, not including the area of the *intermediate floors* if the *intermediate floors* are enclosed or partitioned or

- b) 40% of the area of the *firecell* floor, not including the area of the *intermediate floors* if the *intermediate floors*:

- i) are completely open, or
- ii) if enclosed or partitioned, a Type 4 system is installed, or

Comment:

If the provision of the smoke detection system is solely to comply with this requirement, Fire Service connection is not required.

- c) The area that allows up to 100 occupants on the *intermediate floors* based upon the occupant density of the space in accordance with Paragraph 1.4.

Comment:

The smaller (20%) floor area is a concession for spaces used essentially for storage with a low *occupant density*.

Firecells containing *intermediate floors* require the same *fire safety* precautions as single level *firecells* having the same total *occupant load* and *escape height*. Examples of *buildings* having *intermediate floors* which could meet these requirements are:

- Factories and warehouses.
- Offices.

As 100 occupants is the maximum *occupant load* of an *intermediate floor* (depending on the activity on that floor), the area of that floor cannot exceed that necessary to accommodate 100 persons.

4.13.7 *Intermediate floors* in warehouses capable of storage at a height of more than 3.0 m shall be limited to an area of 35 m².

Gantries, walkways and similar structures

4.13.8 Intermittently occupied structures such as walkways, ladders, flytowers and gantries that are not used by the public are not required to be *fire* rated provided no more than 10 persons have access concurrently.

Basement floors

4.13.9 *Basement firecells* shall be separated from one another, and from the lowest *firecell* above ground level, by *fire separations* having *FRRs* in accordance with Paragraph 2.3.

Amend 2
Dec 2013

Amend 2
Dec 2013

Amend 3
Jul 2014

Amend 2
Dec 2013



4.14 Subfloor spaces

4.14.1 In buildings with an unoccupied subfloor space between the ground and lowest floor (see Figure 4.8), the *FRR* of that floor shall be in accordance with Paragraph 2.3, except that no *FRR* is required if the following conditions are satisfied:

- a) Vertical *fire separations* and *external walls* extend down to ground level and enclose the space, and
- b) Access is available only for intermittent servicing of plumbing, drainage or other static services, and

- c) The space is not used for storage and does not contain any installation such as machinery or heating appliances which could create a *fire hazard*, except when *fire separated* from the rest of the subfloor space.

Figure 4.8 Subfloor spaces
Paragraph 4.14.1

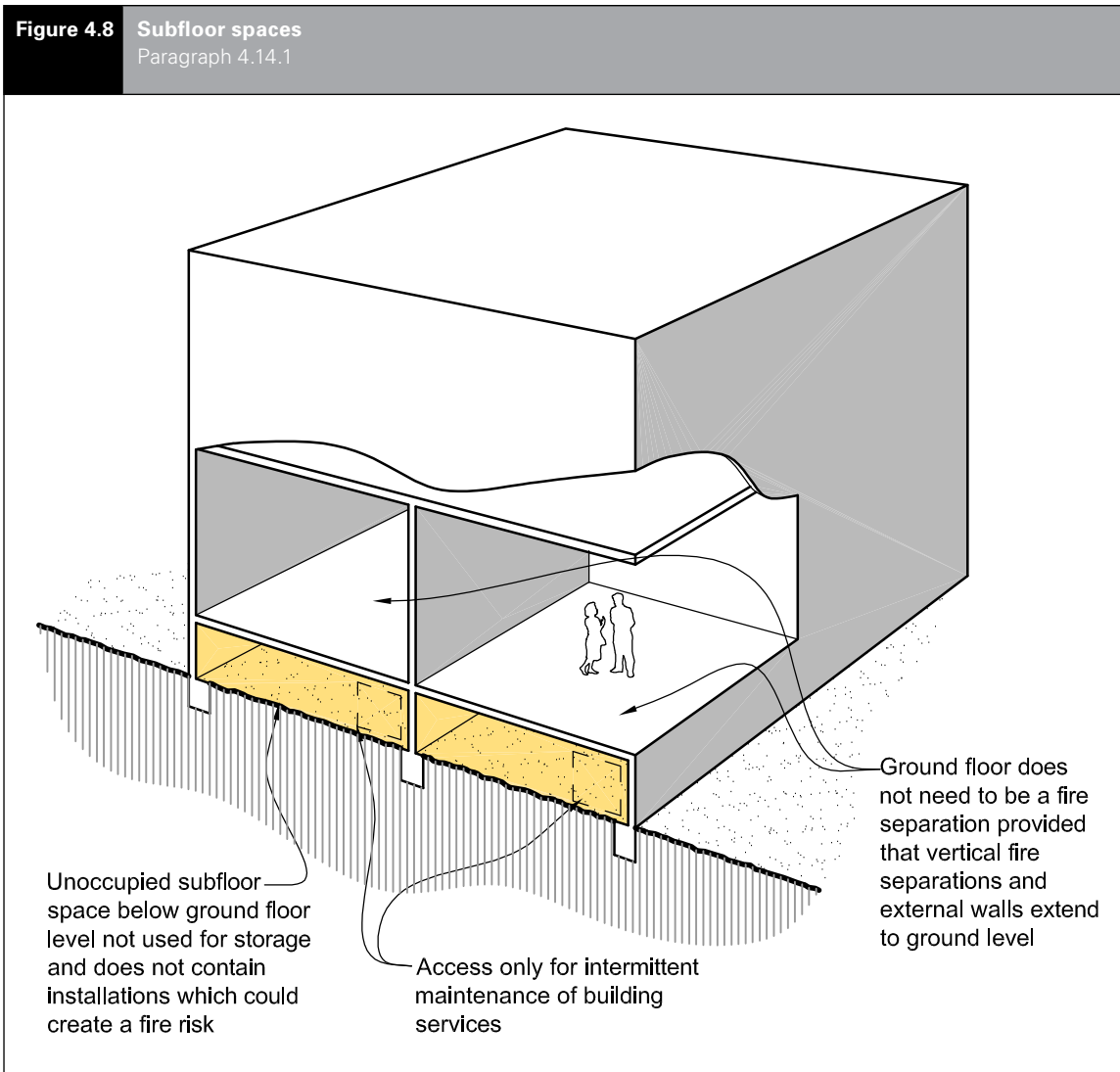


Figure 4.10 Curtain wall
Paragraphs 4.15.3 and 5.7.14

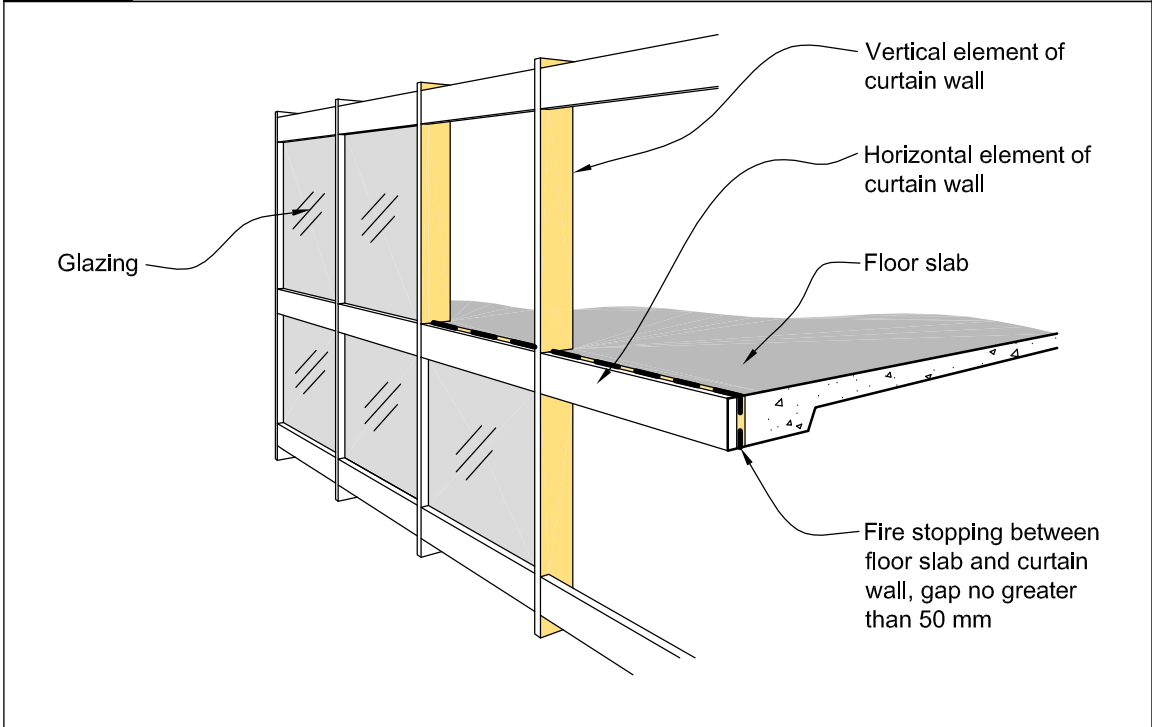
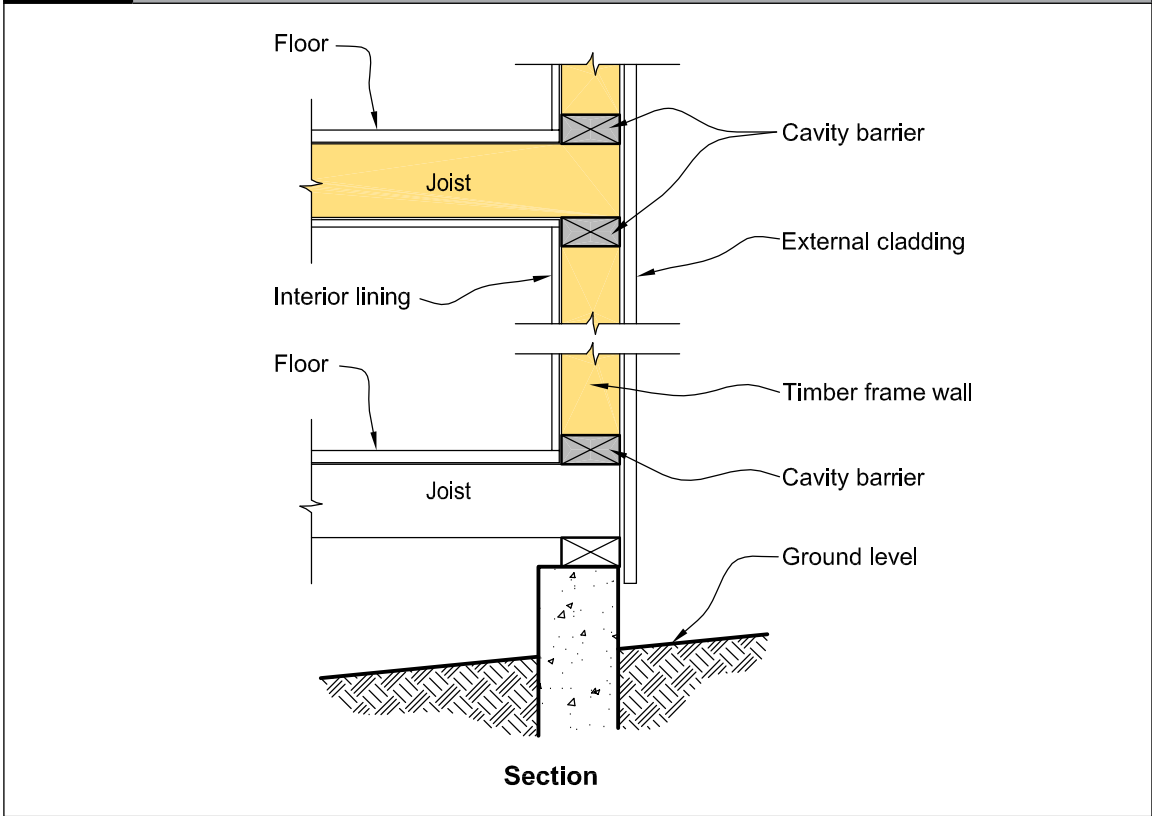


Figure 4.11 Hollow construction
Paragraph 4.15.3



Cavity barrier construction**4.15.5** *Cavity barriers* shall:

- a) Not reduce the *FRR* required for the element within which they are installed
- b) Where practical, be tightly fitted and mechanically fixed to rigid *construction*, but if this is not possible gaps shall be *fire stopped*, and
- c) Be fixed in a way that avoids impairment of their *fire separation* function as a result of:
 - i) *building* movement due to subsidence, shrinkage or thermal change, or
 - ii) collapse or failure of their components or fixings, or of abutting materials and any *penetrations* during a *fire*.

4.15.6 THIS PARAGRAPH DELIBERATELY LEFT BLANK

4.15.7 THIS PARAGRAPH DELIBERATELY LEFT BLANK

4.15.8 THIS PARAGRAPH DELIBERATELY LEFT BLANK

4.16 Closures in fire and smoke separations**Introduction**

4.16.1 If activities within a *building* require openings in *fire* or *smoke separations* (eg, for the passage of people, goods or services or for light), closures to those openings shall have the *fire* resistance and smoke control performance as follows:

- a) An *FRR* of *-/60/30* sm if unsprinklered (except as permitted by Paragraphs 4.16.11 and 4.16.12) and plant rooms require an *FRR* of *-/90/30* sm, or
- b) An *FRR* of *-/30/-* sm if sprinklered except plant rooms which shall have an *FRR* of *-/45/-* sm.

Amend 2
Dec 2013

Amend 3
Jul 2014

Comment:

sm indicates that the closure performs as part of a *smoke separation*. See Paragraph 4.16.2 b) for doors in *smoke separations* and Paragraph 4.16.10 for access panels.

4.16.2 *Doorsets* which are required to be:

- a) *Fire doors* shall comply with Appendix C C6.1.1
- b) *Smoke control doors* shall, except as allowed by Paragraph 4.16.3, comply with Appendix C C6.1.2, and
- c) *Fire doors* with smoke control capability shall comply with both a) and b).

Comment:

Smoke seals may be of the brush type and need not incorporate intumescent material. However, intumescent seals may be required if the door is also a *fire door*.

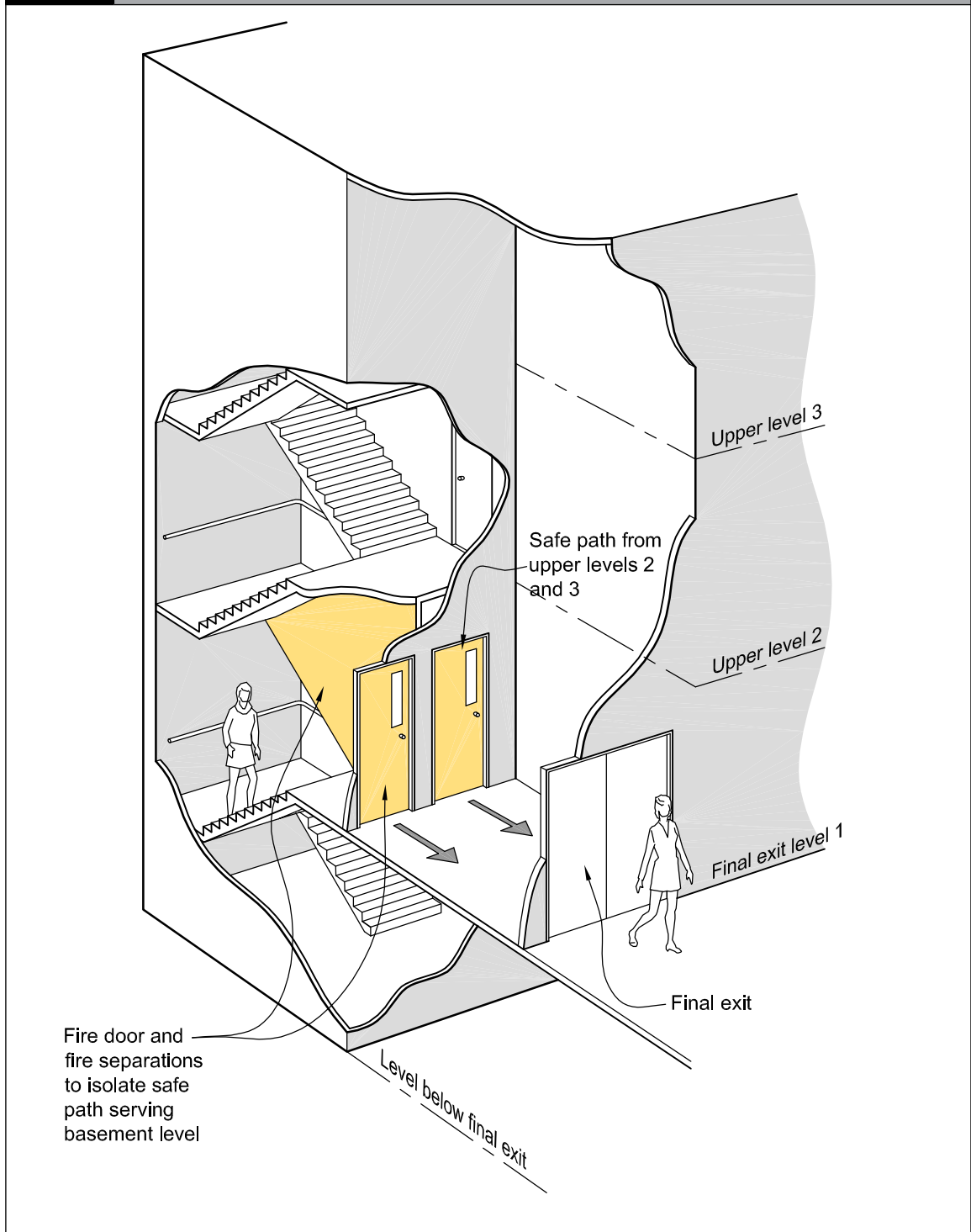
4.16.3 *Doorsets* installed in *fire separations* between *firecells* and vertical *safe paths* or *protected shafts* shall have smoke seals on all edges, except that smoke seals may be omitted:

- a) At the sill of *doorsets*, and
- b) For lifts, if either:
 - i) the *firecell* is sprinklered and has an automatic smoke detection system, or
 - ii) a *smokecell* is placed between the doors and the rest of the *firecell*, other than when the lift shaft is permitted to be in the vertical *safe path*.

Fire door and smoke control door installation

4.16.4 *Fire doors* and *smoke control doors* shall be installed in accordance with Paragraph 3.15.

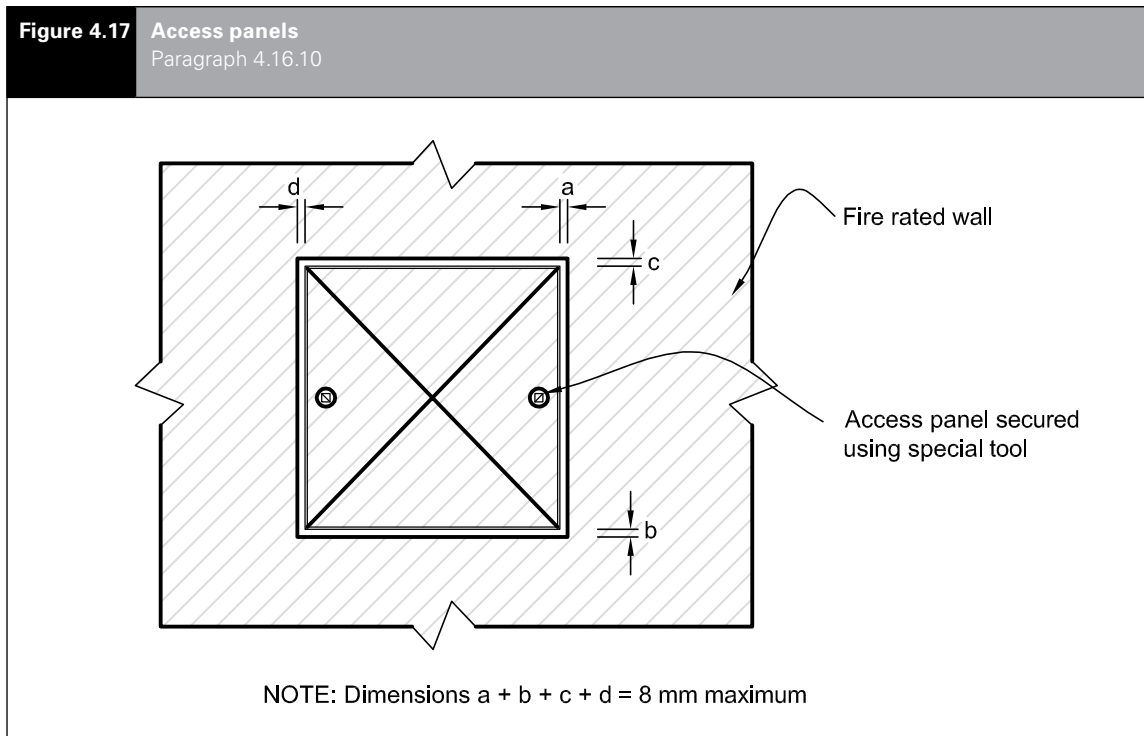
Figure 4.16 Fire doors to separate floors above and below final exit level
Paragraph 4.16.9 d)



Protected shaft access panels

4.16.10 Access panels to *protected shafts* shall have the *fire* resistance performance as required by Paragraph 4.16.1 and shall:

- Be capable of being opened only with a special tool, and
- If smoke seals cannot be provided, be tight-fitting with a maximum total gap of 8 mm around the panel (see Figure 4.17).



Lift landing doors

4.16.11 Other than where Paragraph 3.10.3 for a passenger lift within a vertical *safe path* applies, *doorsets* for lift landing doors opening into lift shafts which are *protected shafts* shall be *fire doors* complying with Paragraphs 4.16.1 to 4.16.3 except that an *insulation* rating is not required. Lift landing doors need not be *fire* rated from the shaft side.

Fire dampers

4.16.12 Any duct (unless fully enclosed by *construction* with an *FRR* no less than required for the *fire separation*) that passes through a *fire separation* shall not reduce the *fire* resistance of the *construction* (excluding *external walls* and *roofs*) through which the duct passes.

Where a *fire damper* is used to maintain the required *fire* resistance it shall:

- comply with AS/NZS 1668.1, and
- have a *fire integrity* and *insulation* rating no less than that of the *fire separation*, except that the *damper blade* is not required to have an *insulation* rating if the *building* is sprinkler protected or means are provided to prevent *combustible* materials being placed closer than 300 mm to the *fire damper* and air duct.

Fire dampers shall be capable of being readily accessed for servicing.

Amend 2
Dec 2013

Amend 2
Dec 2013

Amend 3
Jul 2014

Amend 3
Jul 2014

Fire shutters

4.16.13 If a floor has a service opening (eg, for stairs, a conveyor, forklift access or similar installation) which is not used as part of an *escape route* and which is fitted with a *fire shutter*, the floor may be treated as a *fire separation*.

4.16.14 The *fire shutter* shall be automatically activated by a signal from a smoke detector.

4.16.15 A *fire shutter* shall include a device to retard the rate of closing to no more than 150 mm per second.

4.17 Interior surface finishes, floor coverings and suspended flexible fabrics

Surface finish requirements for walls, ceilings, ducts and insulation

4.17.1 *Surface finish* requirements shall be as specified in Table 4.1.

Foamed plastics and combustible insulating materials

4.17.2 If *foamed plastics building materials* or *combustible insulating materials* form part of a wall or ceiling system, the complete system shall achieve a *Group Number* as specified in Table 4.1 and the *foamed plastics* shall comply with the flame propagation criteria as specified in AS 1366 for the material being used. This requirement does not apply to *building elements* listed in Paragraph 4.17.6.

Comment:

The completed system may or may not include a surface lining product enclosing any insulation material from any adjacent *occupied space*. If a surface lining is not included, then the *foamed plastics* or *combustible insulating materials* when tested alone shall achieve a *Group Number* of 3 (see Appendix A of C/VM2), otherwise a surface lining is also required such that the completed system achieves a *Group Number* of 3. This paragraph applies to *foamed plastics building materials* whether exposed to view from the *occupied space* or enclosed.

Flooring

4.17.3 Flooring shall be either *non-combustible* or, when tested to ISO 9239-1, shall have a critical radiant flux of not less than that specified in Table 4.2.

4.17.4 Paragraph 4.17.3 shall apply to flexible finishes such as carpets, vinyl sheet or tiles, and to finished or unfinished floor surfaces.

| Table 4.1 | Surface finish requirements | | | |
|---------------|--|----------------------------------|---|---|
| | <i>Exitways</i> All <i>occupied spaces</i> in importance level 4 <i>buildings</i> | All other <i>occupied spaces</i> | Ducts for HVAC systems: internal surfaces | Ducts for HVAC systems: external surfaces |
| | Maximum permitted <i>Group Number</i> | | | |
| Unsprinklered | 1S | 3 | 1S | 3 |
| Sprinklered | 2 | 3 | 2 | 3 |

Comment:

The method for assigning the *Group Number* to a material and for establishing the smoke production rate is specified in Verification Method C/VM2 Appendix A.

Amend 3
Jul 2014

Amend 3
Jul 2014

Amend 3
Jul 2014

Amend 2
Dec 2013

Amend 3
Jul 2014



| Table 4.2 Critical radiant flux requirements for flooring | | |
|---|---|--|
| Area of building | Minimum critical radiant flux when tested to ISO 9239-1 | |
| | Buildings not protected with a fire sprinkler system | Buildings protected with a fire sprinkler system |
| Exitways in all buildings | 2.2 kW/m ² | 2.2 kW/m ² |
| Firecells accommodating more than 50 people | 2.2 kW/m ² | 1.2 kW/m ² |
| All other occupied spaces | 1.2 kW/m ² | 1.2 kW/m ² |

Wood and wood products in floors

4.17.5 In addition to the requirements of Paragraph 4.17.3, where floors in multi-storey buildings are *fire separations* and where the flooring material is made of wood products (wood products include boards manufactured from wood fibres or chips bound by an adhesive) the flooring material shall have either a thickness of no less than nominally 20 mm, or the floor assembly shall have an *FRR* of -/30/30 when exposed to *fire* from the flooring side.

Comment:

- Nominal 20 mm thickness includes standard flooring products such as 19 mm particle board or 17 mm plywood. These are acceptable.
- Paragraph 4.17.5 addresses potential *fire* spread from the upper to lower *firecell* by limiting *fire* spread down through the floor assembly. Protecting the upper *firecell* from a *fire* in the lower *firecell* is still also a requirement, achieved by use of *fire separations* as described in Paragraph 4.13.

Exceptions to surface finish requirement

4.17.6 *Surface finish* requirements do not apply to:

- Small areas of non-conforming product within a *firecell* with a total aggregate surface area of not more than 5.0 m²
- Electrical switches, outlets, cover plates and similar small discontinuous areas
- Pipes and cables used to distribute power or services

d) *Handrails* and general decorative trim of any material such as architraves, skirtings and window components, including reveals, provided these do not exceed 5% of the surface area of the wall or ceiling they are part of

e) *Damp-proof courses*, seals, caulking, flashings, thermal breaks and ground moisture barriers

f) Timber joinery and structural timber *building elements constructed* from solid wood, glulam or laminated veneer lumber. This includes heavy timber columns, beams, portals and shear walls not more than 3.0 m wide, but does not include exposed timber panels or permanent formwork on the underside of floor/ceiling systems

g) Individual *doorsets*, and

h) Continuous areas of permanently installed openable wall partitions having a surface area of not more than 25% of the divided room floor area or 5.0 m², whichever is less.

i) DELIBERATELY LEFT BLANK

j) DELIBERATELY LEFT BLANK

4.17.7 THIS PARAGRAPH DELIBERATELY LEFT BLANK.

Suspended flexible fabrics

4.17.8 When tested to AS 1530 Part 2, suspended flexible fabrics shall, within all *occupied spaces* including *exitways*:

- Have a *flammability index* of no greater than 12, and
- When used as underlay to roofing (whether or not the space is sprinklered) or exterior cladding that is exposed to view, have a *flammability index* of no greater than 5.

Membrane structures

4.17.9 The fabric of structures such as tents, marquees or canopies shall be tested to AS 1530 Part 2 and shall achieve a *flammability index* of no greater than 12.

4.17.10 The requirements for membrane structures need not apply to small *occupant loads* such as camping tents and horticultural applications.

Amend 2
Dec 2013

Amend 2
Dec 2013

Amend 3
Jul 2014

Air ducts

4.17.11 Where air ducts are contained wholly within a *protected shaft*, provided the shaft does not also contain lifts, only the interior *surface finish* of the air duct is required to comply with Table 4.1.

4.18 Building services plant

.....

Automatic activation

4.18.1 When any smoke detection system is activated, it shall automatically turn off all air-conditioning and mechanical ventilation which is not required or designed for *fire* safety.

Comment:

Paragraph 4.18.1 does not apply to non-distributed ventilation and air-conditioning such as typical domestic/commercial heat pump units.

Amend 3
Jul 2014

Air handling systems

4.18.2 Where smoke control in air handling systems is required to prevent the recirculation of smoke through an air handling system to other *firecells* in a *building*, these systems shall be as specified in Appendix A A2.1.

Part 5: Control of external fire spread

CONTENTS

- 5.1 Fire separation for buildings with more than one title
- 5.2 Horizontal fire spread from external walls
- 5.3 FRRs of external walls
- 5.4 Small openings and fire resisting glazing
- 5.5 Table method for external walls
- 5.6 Horizontal fire spread from roofs and open sided buildings
- 5.7 Vertical fire spread
- 5.8 Exterior surface finishes

5.1 Fire separation for buildings with more than one title

5.1.1 When a *building* is subdivided so that the *building* straddles more than one title, each part of the *building* located on a separate title, other than titles comprising vehicle parking areas, shall be separated from:

- a) The part of the *building* on an adjacent title, by *fire separations* having an *FRR* meeting the *property rating* in accordance with Paragraph 2.3, and
- b) Any external area in common (unless Paragraph 5.1.2 applies), by *external walls* complying with Paragraph 5.3, except that, if roofed, the area in common shall be a *firecell*, separated from adjacent titles by *fire separations* meeting the *property rating* in accordance with Paragraph 2.3.

Comment:

In a) above, vertical *fire separations* provide *fire ratings* between titles. Floors between titles are also *fire separations* and provide the horizontal separation. See Acceptable Solution C/AS7 for allowances in vehicle parking areas of *buildings* separated into multiple titles.

In b) above, a *notional boundary* is established between the titles, and the permitted *unprotected area* in the *external walls* of both titles is determined with respect to that *notional boundary*. When the area in common is roofed, the danger to life and adjacent property is increased; hence the need for greater precautions.

5.1.2 If a *building* is subdivided (as in Paragraph 5.1.1 a)) and all the titles and any areas in common are sprinklered throughout, the requirements for *fire separations* of Paragraph 5.1.1 b) need not apply. However, the requirements for *fire separation of safe paths* in Paragraphs 4.9.2 and 4.9.3 shall still apply.

5.2 Horizontal fire spread from external walls

Separation

5.2.1 Specific separation requirements for *unprotected areas* in *external walls* shall be applied in the following circumstances:

- a) If, due to the configuration of a single *building* or the siting of other *buildings* on the same property, *external walls* of adjacent *firecells* are exposed to each other at an angle of less than 90°, and one or both *firecells* contain sleeping *risk groups* or *exitways*, or
- b) If there are *unprotected areas* in *external walls* facing a *relevant boundary* to *other property* at an angle of less than 90°.

Errata 1
Feb 2013

Errata 1
Feb 2013

Comment:

When the vertical planes of two *external walls* of separate *firecells*, or of an *external wall* and a *relevant boundary* of *other property* (where the wall faces that *boundary*), intersect at an angle of less than 90°, there is potential danger of *fire* spread between *firecells* or to *other property*.

Errata 1
Feb 2013

5.2.2 Protection shall be achieved by using one or more of the following approaches:

- a) Unless the *firecell* is used for storage over a height of 3.0 m, providing a sprinkler system with a water supply complying with NZS 4541 and consisting of two independent supplies one of which is not dependent on town mains
- b) Distance separation (see Paragraph 5.5)
- c) Limiting *unprotected areas* in *external walls* (see Paragraph 5.5)
- d) Using *fire resisting glazing* (see Paragraph 5.4).

5.2.3 Where the intersection angle of the *building* and the *relevant boundary* is 90° or greater, there are no requirements and an *unprotected area* of 100% is permitted for the *external wall*.

5.2.4 If a wall or part of a wall is less than 1.0 m from the *relevant boundary*, a combination of small *unprotected areas* and *fire resisting glazing* is permitted as detailed in Paragraph 5.4.

5.2.5 Table 5.2 applies only to the permitted *unprotected area* in *external walls* 1.0 m or more from the *relevant boundary*. This can be combined with the areas of *fire resisting glazing* and small *unprotected areas* in Paragraph 5.4.

5.2.6 Regardless of the method adopted, all parts of an *external wall* other than allowable *unprotected areas*, shall have the appropriate *FRR* as specified by the relevant parts of this Acceptable Solution.

Analysis required for all external walls

5.2.7 The analysis shall be done for all *external walls* of the *building* to check the permitted *unprotected area* in each wall.

Notional boundary – firecells on the same property

5.2.8 For *firecells* under common *ownership* in the same *building*, or in separate *buildings* on the same property, a *notional boundary* shall be used instead of the *relevant boundary*. In such cases, when applying Tables 5.1, 5.2 and 5.3, the words *relevant boundary* shall be interpreted as *notional boundary*.

5.2.9 Where one or both *firecells* on the same property contain *risk groups* SI, SM, SH or *exitways*, analysis shall be done separately for each *firecell* with respect to the same *notional boundary*.

5.3 FRRs of external walls

5.3.1 *Building elements* that are part of an *external wall* that is required to be *fire rated* shall be *fire rated* as required by Paragraph 2.3. If a *safe path* has an *external wall*, that wall may be 100% unprotected provided any walls between the safe path and adjacent *firecells* have an *FRR* determined using the *property rating*.

5.3.2 Any part of an *external wall* enclosing a *firecell* and not permitted to be an *unprotected area* shall have an *FRR* based on the *property rating* in accordance with Paragraph 2.3. If the *external wall* is less than 1.0 m from the *relevant boundary* the wall shall be *fire rated* to protect from both directions.

Amend 3
Jul 2014

Errata 1
Feb 2013

5.3.3 When the *unprotected area* of an *external wall* is permitted to be 100%, but the *primary elements* in the line of that wall are required to be *fire rated*, the rating of those *primary elements* shall be no less than the *life rating* in accordance with Paragraph 2.3.

Comment:

Primary elements are required to be *fire rated* in *buildings* with an *escape height* of greater than 25 m and where they support, or are an integral part of, other *fire rated building elements*.

5.4 Small openings and fire resisting glazing

5.4.1 *External wall construction* shall meet the following requirements:

- a) *Unprotected areas* (referred to as Type A areas) and areas of *fire resisting glazing* (referred to as Type B areas) shall be located to comply with Figure 5.1, and
- b) The remainder of the wall shall be *fire rated* equally for exposure to *fire* on both sides.

Size and spacing of Type A and Type B areas

5.4.2 Type A areas shall be no greater than 0.1 m². Type B areas shall be no greater than permitted by Table 5.1 according to the distance from the *relevant boundary*.

5.4.3 The *fire resisting glazing* shall be rated for *integrity* and the *FRR* of both the glazing and the *external wall* shall be in accordance with Paragraph 2.3.

5.4.4 There is no limitation on the spacing between adjacent Type A and Type B areas which occur in different *firecells*. Within a *firecell* the following requirements shall apply:

- a) Type A areas shall be no closer, both vertically and horizontally, than 1.5 m to another Type A or to a Type B area
- b) Type B areas shall be no closer to one another, vertically or horizontally, than the dimensions X or Y shown on Figure 5.1, and
- c) Where Type B areas are staggered, rather than being aligned vertically or horizontally, the shortest distance, in any direction, between adjacent areas shall be no less than the greater of the X and Y measurements.

Errata 1
Feb 2013

Errata 1
Feb 2013

Errata 1
Feb 2013

| Table 5.2/1 | | Maximum percentage of unprotected area for external walls | | | | | | | | | | | |
|---|---|--|--------------------------------------|-------------------|--|-------------------|--------------------------------------|-------------------|--|-------------------|--------------------------------------|-------------------|--|
| <i>Risk group</i> WB | Firecells other than warehouses with storage height greater than 3.0 m but less than 5.0 m | | | | | | | | | | | | |
| | Percentage of wall area allowed to be unprotected | | | | | | | | | | | | |
| | Column 2 | | Column 3 | | Column 4 | | Column 5 | | Column 6 | | Column 7 | | |
| Minimum distance to <i>relevant boundary</i> (m) (see Figure 5.3) | Angle between wall and <i>relevant boundary</i> up to 45° | | | | Angle between wall and <i>relevant boundary</i> 46° to 60° | | | | Angle between wall and <i>relevant boundary</i> 61° to 89° | | | | |
| | Width of unsprinklered <i>firecell</i> | | Width of sprinklered <i>firecell</i> | | Width of unsprinklered <i>firecell</i> | | Width of sprinklered <i>firecell</i> | | Width of unsprinklered <i>firecell</i> | | Width of sprinklered <i>firecell</i> | | |
| | Up to 10 m | Greater than 10 m | Up to 10 m | Greater than 10 m | Up to 10 m | Greater than 10 m | Up to 10 m | Greater than 10 m | Up to 10 m | Greater than 10 m | Up to 10 m | Greater than 10 m | |
| Less than 1 | 0 | 0 | 0 | 0 | 0 | 0 | 0 | 0 | 0 | 0 | 0 | 0 | |
| 1 | 20 | 20 | 40 | 40 | 20 | 20 | 40 | 40 | 25 | 20 | 50 | 40 | |
| 2 | 25 | 25 | 50 | 50 | 30 | 25 | 60 | 50 | 35 | 25 | 70 | 50 | |
| 3 | 30 | 30 | 60 | 60 | 40 | 30 | 80 | 60 | 40 | 30 | 80 | 60 | |
| 4 | 40 | 35 | 80 | 70 | 50 | 35 | 100 | 70 | 50 | 40 | 100 | 80 | |
| 5 | 50 | 40 | 100 | 80 | 65 | 40 | | 80 | 60 | 50 | | 100 | |
| 6 | 60 | 50 | | 100 | 80 | 50 | | 100 | 75 | 60 | | | |
| 7 | 75 | 55 | | | 90 | 60 | | | 90 | 75 | | | |
| 8 | 90 | 60 | | | 100 | 70 | | | 100 | 90 | | | |
| 9 | 100 | 70 | | | | 80 | | | | 100 | | | |
| 10 | | 80 | | | | 90 | | | | | | | |
| 11 | | 90 | | | | 100 | | | | | | | |
| 12 | | 100 | | | | | | | | | | | |

Errata 1
Feb 2013

Amend 3
Jul 2014

Errata 1
Feb 2013

Errata 1
Feb 2013

| Table 5.2/2 Maximum percentage of wall area allowed to be unprotected | | | | | | |
|--|--|--------------------------------------|--|--------------------------------------|--|--------------------------------------|
| Risk group WB | Warehouses with storage height greater than 3.0 m but less than 5.0 m or limited area of storage as per Paragraph 2.2.1 | | | | | |
| | Percentage of wall area allowed to be unprotected | | | | | |
| | Column 2 | Column 3 | Column 4 | Column 5 | Column 6 | Column 7 |
| Minimum distance to <i>relevant boundary</i> (m) (see Figure 5.3) | Angle between wall and <i>relevant boundary</i> up to 45° | | Angle between wall and <i>relevant boundary</i> 46° to 60° | | Angle between wall and <i>relevant boundary</i> 61° to 89° | |
| | Width of unsprinklered <i>firecell</i> | Width of sprinklered <i>firecell</i> | Width of unsprinklered <i>firecell</i> | Width of sprinklered <i>firecell</i> | Width of unsprinklered <i>firecell</i> | Width of sprinklered <i>firecell</i> |
| | All | All | All | All | All | All |
| Less than 1 | 0 | 0 | 0 | 0 | 0 | 0 |
| 1 | 10 | 20 | 15 | 30 | 15 | 30 |
| 2 | 15 | 30 | 15 | 35 | 15 | 35 |
| 3 | 20 | 40 | 20 | 40 | 20 | 40 |
| 4 | 20 | 45 | 25 | 50 | 25 | 50 |
| 5 | 25 | 50 | 25 | 55 | 30 | 60 |
| 6 | 30 | 60 | 30 | 60 | 35 | 70 |
| 7 | 35 | 70 | 35 | 70 | 40 | 80 |
| 8 | 40 | 80 | 45 | 90 | 50 | 100 |
| 9 | 40 | 85 | 50 | 100 | 55 | |
| 10 | 45 | 90 | 55 | | 65 | |
| 11 | 50 | 100 | 60 | | 70 | |
| 12 | 60 | | 70 | | 80 | |
| 13 | 65 | | 80 | | 90 | |
| 14 | 70 | | 85 | | 100 | |
| 15 | 100 | | 100 | | | |

Note: For warehouses with storage height 5.0 m or greater, see Acceptable Solution C/AS6 for *risk group WS*.

Amend 3
Jul 2014

| Table 5.3 Maximum size of largest permitted single unprotected area in external walls | | | | |
|--|--|---|--|---|
| Minimum distance to <i>relevant boundary</i> (m) (see Figure 5.3) | Unsprinklered <i>firecells</i> | | Sprinklered <i>firecells</i> | |
| | Maximum largest single <i>unprotected area</i> (m ²) | Minimum distance to adjacent <i>unprotected areas</i> (m) | Maximum largest single <i>unprotected area</i> (m ²) | Minimum distance to adjacent <i>unprotected areas</i> (m) |
| 1 | 1 | 0.5 | 15 | 1.5 |
| 2 | 4 | 1 | 35 | 2.5 |
| 3 | 10 | 5 | 60 | 3.5 |
| 4 | 16 | 7 | 96 | 4 |
| 5 | 23 | 8 | 139 | 4.5 |
| 6 | 31 | 8.5 | No restriction | No restriction |
| 7 | 40 | 9.5 | No restriction | No restriction |
| 8 | 51 | 11 | No restriction | No restriction |
| 9 | 64 | 13 | No restriction | No restriction |
| 10 | 77 | 13.5 | No restriction | No restriction |

5.6 Horizontal fire spread from roofs and open sided buildings

5.6.1 In *buildings* other than offices and laboratories where the roof of an unsprinklered *firecell* is within 1.0 m of a *relevant boundary*, horizontal *fire spread* shall be resisted by either:

- a) *Fire rating* (for *fire exposure* from below) that part of the roof within 1.0 m of the *relevant boundary*. The *FRR* shall be based on the *property rating* for the *firecell*, except that *insulation* is not required, or
- b) Extending the wall, being a *fire separation* along or adjacent to the *relevant boundary*, no less than 450 mm above the roof to form a parapet.

Parapets for storage

5.6.2 For unsprinklered *firecells*, if *combustible materials* are stored on an area of roof within 1.5 m of a *relevant boundary*, but the conditions of Paragraph 5.7.16 (for an adjacent higher wall) do not apply, a parapet shall be *constructed*. The parapet shall extend no less than 1.5 m, or above the top of the stored materials, on the side of the *relevant boundary*. The parapet shall have an *FRR* in accordance with Paragraph 2.3.

Comment:

For vehicle parking on roofs, see Acceptable Solution C/AS7.

Roof projections

5.6.3 If the *external wall* is required to have an *FRR*, the eaves projection shall be *constructed* with the same *FRR* as the *external wall*. Alternatively, the *external wall* shall be extended to the underside of the roof and the eaves need not be *fire rated* (see Figure 5.4).

5.6.4 If the *external wall* is not required to have an *FRR*, roof eaves projecting from that wall need not be rated provided that no part of the eaves *construction* is closer than 650 mm to the *relevant boundary*.

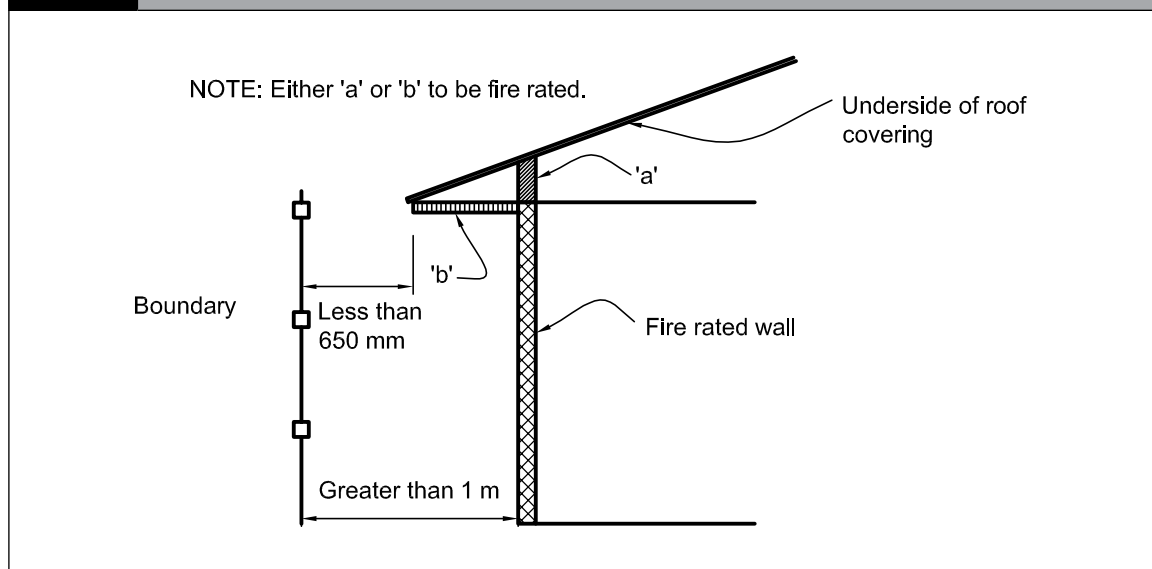
5.6.5 If the *external wall*, on its own, is not required to have an *FRR*, but roof eaves extend to within 650 mm of the *relevant boundary*, the total eaves *construction* and the *external wall* from which they project shall have an *FRR* in accordance with Paragraph 2.3 (see Figure 5.4).

Comment:

Eaves *construction* includes the guttering or spouting and any other projections from the eaves, although guttering or spouting need not be *fire rated*.

Figure 5.4

Eaves projection
Paragraphs 5.6.3 and 5.6.5



Open sided buildings

5.6.6. An open sided *building* may be either a detached *building* or be connected to another *building* (see Figure 5.5). For the open sided *building* to be deemed 'detached', the horizontal distance between the other *building* and the roof of the open sided *building* shall be no less than:

- a) 1.0 m for a roof area exceeding 40 m², and
- b) 0.3 m for a roof area no greater than 40 m².

5.6.7 A *building* having only a single floor level may be *constructed* with walls and roof having 100% *unprotected area* provided that:

- a) At least two sides of the perimeter wall are completely open to the environment, and
- b) If attached to another *building*, both *buildings* are under the control of the same occupancy, and
- c) For unlimited roof plan areas, no part of the roof is closer than 3.0 m to a *relevant boundary*, and
- d) For roof plan areas of no greater than 40 m², no part of the roof is closer than 0.3 m to a *relevant boundary*.

Comment:

Examples of open sided *buildings* having a roof area exceeding 40 m² are loading canopies, while those with roof areas of less than 40 m² would be structures such as lean-to's.

5.6.8 If a floor projects beyond the face of any part of an *external wall* which requires a *property rating*, or any part of the projection is closer than 1.0 m to the *relevant boundary*, the floor projection shall have the same *FRR* as the floor inside the *external wall*, and exposed exterior faces of the projection shall comply with Paragraph 5.8.

5.7 Vertical fire spread

Roofs

5.7.1 Sleeping *risk groups*, *other property* and external *exitways* shall be protected against vertical *fire* spread from roofs.

5.7.2 Protection against *fire* spread shall be achieved using one or more of the following methods:

- a) Separation by distance
- b) *Fire* rating the adjoining *external wall*
- c) *Fire* rating all or part of the roof against the threat of *fire* from the underside
- d) Installing sprinklers in the *firecell* below the roof.

External exitways over roofs

5.7.3 Subject to Paragraph 3.11.4, when an external *exitway* crosses a roof or is above or adjacent to a roof on the same or another *building*, the roof within 3.0 m of any part of the *exitway*, and all supporting elements, shall have an *FRR* in accordance with Paragraph 2.3.

Primary elements

5.7.4 *Primary elements* providing support to an area of *fire* rated roof shall have an *FRR* of no less than that of the roof.

5.7.5 When supporting an unrated roof:

- a) *Primary elements* such as columns or walls which are required to be *fire* rated shall be rated from floor level to the underside of the roof framing members, and
- b) Any roof framing members connected to these *fire* rated columns or walls shall also be rated if their collapse in *fire* would cause the consequential collapse of the rated columns or walls.

Fire spread from an adjacent lower roof

5.7.6 *Fire* spread from a roof close to and lower than an *external wall* shall be avoided by compliance with Paragraph 5.7.7 where *firecells* behind the wall contain:

- a) *Other property*, or
- b) Sleeping *risk groups* SI or SM in the same *building* (as the lower roof), or in an adjacent *building* on the same title, or
- c) *Exitways* in the same *building* (as the lower roof), or in an adjacent *building* on the same title.

5.7.7 Where the distance between any part of an *external wall* and a lower roof is less than 9.0 m vertically or 5.0 m horizontally (see Figure 5.6), protective measures shall be applied either to the roof as specified in Paragraph 5.7.8 or to the wall as specified in Paragraph 5.7.9.

Errata 1
Feb 2013

Amend 3
Jul 2014

Amend 3
Jul 2014

Appendix B (normative): Fire sprinkler systems

B1.1 Introduction

.....

B1.1.1 Wherever sprinklers are required by this Acceptable Solution, they shall comply with the relevant New Zealand Standard, amended as shown in Paragraphs B2.1 and B3.1.

B2.1 Automatic fire sprinkler systems

.....

B2.1.1 NZS 4541 is amended as follows:

Clause 103 Definitions

Sprinkler system A system including:

- (a) to (i) No change.
- (j) Delete.
- (k) Delete.
- (l) No change.

Clause 205 Delete entire clause.

Clause 209 Delete entire clause.

Clause 1203 Routine Surveys

Clause 1203.1 Delete first two paragraphs and replace with:

“It is important that a sprinkler system at all times complies with this Standard as amended by Paragraph B2.1 of Appendix B to C/AS5 in all respects. To ensure that building alterations, changes in process or storage patterns or progressive deterioration of system components do not prejudice system compliance, a comprehensive survey shall be carried out biennially at intervals not exceeding 28 months. Such surveys shall be carried out by an independent qualified person.”

B3.1 Residential fire sprinkler systems

.....

B3.1.1 NZS 4515 is amended as follows:

Clause 1.5 Definitions

Sprinkler system A system including:

- (a) to (g) No change.
- (h) Delete.

Clause 1.11 Delete entire clause.

Clause 2.1.2 Delete.

Clause 2.1.3 Delete.

Amend 2
Dec 2013

Amend 2
Dec 2013

Appendix C (normative): Test methods

C1.1 General

This Appendix contains test methods for confirming that specific *building elements* satisfy relevant provisions of the Acceptable Solutions for Protection from Fire. It includes both established *standard tests* and other test methods for *building elements* in situations where *standard tests* are unavailable.

Comment:

Regardless of the year of the Standard incorporated by reference in this Acceptable Solution, there is no intention to require the *building elements* listed here to be retested to the current edition of the relevant Standard when they have previously been tested to an earlier version of that Standard in force at the date of testing.

Amend 3
Jul 2014

C2.1 Flammability of floor coverings

Materials shall be assigned a critical radiant flux when tested to:

ISO 9239 Reaction to fire tests for flooring – Part 1: Determination of the Burning Behaviour using a radiant heat source.

Or in lieu of testing refer to Table B1 of Appendix B of C/VM2.

Amend 3
Jul 2014

C3.1 Flammability of suspended flexible fabrics and membrane structures

Materials shall be assigned a *flammability index* when tested to:

AS 1530 Methods for fire tests on building materials and structures – Part 2: Test for flammability of materials.

C4.1 Properties of lining materials

C4.1.1 Combustibility test

Materials shall be classified as *non-combustible* or *combustible* when tested to:

AS 1530 Methods for fire tests on building materials and structures – Part 1: Combustibility test for materials

C4.1.2 Material for internal surface linings shall be given a *Group Number* in accordance with Appendix A of C/VM2 and tested to either:

ISO 5660 Reaction-to-fire tests

Part 1 Heat release rate (cone calorimeter method), and

Part 2 Smoke production rate (dynamic method), or

ISO 9705 Fire tests – Full scale room test for surface products.

Or in lieu of testing refer to Table A1 of Appendix A of C/VM2.

Errata 1
Feb 2013

Amend 3
Jul 2014

C5.1 Fire resistance

C5.1.1 *Primary and secondary elements*, closures and *fire stops* shall be assigned a *fire resistance rating (FRR)* when tested to:

- a) AS 1530 Methods for fire tests on building materials and structures – Part 4: Fire resistance tests of elements of building construction, or
- b) NZS/BS 476 Fire tests on building materials and structures – Parts 21 and 22.

C5.1.2 *Fire stops* shall be tested:

- a) In circumstances representative of their use in service, paying due regard to the size of expected gaps to be *fire stopped*, and the nature of the *fire separation* within which they are to be used, and
- b) In accordance with AS 4072: Components for the protection of openings in fire-resistant separating elements – Part 1: Service penetrations and control joints.

Errata 1
Feb 2013

C6.1 Fire doors and smoke control doors

C6.1.1 *Fire doors* shall be evaluated in circumstances representative of their use in service, and shall comply with NZS 4520 Fire-resistant doorsets.

Smoke control doors

C6.1.2 A door shall be deemed to be a *smoke control door* if, in addition to the requirements in this Acceptable Solution for *smoke control doors*:

- a) The door is a *fire door* that is fitted with appropriate smoke seals, or if:
- b) It is *constructed* with solid core leaves. Solid timber core leaves, when used, shall have a leaf thickness of no less than 35 mm, and
- c) It is provided with smoke seals as required by this acceptable solution. Smoke seals shall be in continuous contact with the mating element, and located so as to minimise interruption by hardware, and
- d) The frames are constructed of timber, and the jambs are no less than 30 mm thick, and
- e) Any vision panel cut-outs are no less than 150 mm from the leaf edges.
- f) The maximum average clearances (excluding pre-easing) are
 - i) Leaf to frame 3 mm
 - ii) Leaf to leaf 5 mm
 - iii) Leaf to top of any floor covering 10 mm, and
- g) Any additional facings shall be adhesive fixed, and
- h) It is provided with signage identifying it as a *smoke control door* in accordance with Acceptable Solution F8/AS1.

Amend 2
Dec 2013

Amend 2
Dec 2013

Frictional forces

C6.1.3 The forces required to open any *fire door* or *smoke control door* on an *escape route* shall not exceed 67 N to release the latch, 133 N to set the door in motion, and 67 N to open the door to the minimum required width. These forces shall be applied at the latch stile. These requirements do not apply to horizontal sliding doors in *risk group SI* or to power-operated doors.

Self-closing provision

C6.1.4 All *fire* and *smoke control door* leaves shall be self-closing, and provision shall be made for the self-closing device to be adjustable during commissioning to satisfy

the requirements of Paragraph C6.1.3 after installation.

C6.1.5 Where it is desirable in normal circumstances for a *fire door* or *smoke control door* to operate freely, it is acceptable to use a self-closer mechanism which activates in the event of *fire* but does not operate at other times.

Comment:

1. These circumstances can occur where people are under care. Leaving the door to the occupant’s room (or *suite*) open, reduces that occupant’s feeling of isolation and permits ready observation by staff.
2. Self-closers can be an obstruction to the elderly and *people with disabilities*, who may have difficulty in opening the door against the pressure applied by the self-closer. Acceptable Solution C/AS3 Paragraph 4.6 describes situations where *smoke control doors* do not have to be self closing where they are used within a *group sleeping area* or *suite*.

Automatic smoke-sensing devices

C6.1.6 Automatic smoke-sensing devices complying with NZS 4512, if used, shall be positioned within the stream of air that passes the door when the *smoke control door* is fully open.

C7.1 Fire properties of external wall cladding systems

C7.1.1 *Fire* properties of *external wall* cladding systems shall be determined in accordance with:

- ISO 5660 Reaction-to-fire tests –
- Heat release, smoke production and mass loss rate –
- Part 1: Heat release rate (cone calorimeter method).

C7.1.2 In addition to meeting the general requirements of ISO 5660 Part 1, testing shall be in accordance with the following specific requirements:

- a) An applied external heat flux of 50 kW/m², and
- b) A test duration of 15 minutes,
- c) The total heat release measured from start of the test,
- d) Sample orientation horizontal, and
- e) Ignition initiated by the external spark igniter.



C7.1.3 Timber claddings which have a *fire retardant* treatment incorporated in or applied to them shall be subjected to the regime of accelerated weathering described in ASTM D 2898 Method B with the water flow rate from Method A before testing in accordance with the requirements of Paragraph C7.1.1.

C7.1.4 *External wall* cladding systems which comprise only materials which individually are classified as *non-combustible* may be deemed to satisfy all the requirements of Paragraph 5.8.1.

Comment:

The *non-combustible* classification represents a more onerous performance level than those required by Paragraph 5.8.1 and is therefore acceptable.

A *non-combustible* classification may be claimed only if the respective materials have been subjected to testing as described in Paragraph C7.1.1.

C7.1.5 Claddings incorporating a metal facing with a melting point of less than 750°C covering a *combustible* core or insulant shall be tested as described in Paragraph C7.1.2 without the metal facing present.

Comment:

Aluminium has a melting point of less than 750°C.

Index

References are to the relevant paragraphs, figures or tables in **C/AS5** unless otherwise stated.
References to Appendices are prefixed by the Appendix letter.

| | |
|---|---|
| Alterations and changes of use | 1.3 |
| Control of external fire spread | Part 5 |
| External walls – table method | 5.5, Figures 5.2 and 5.3, Tables 5.2 and 5.3 |
| Exterior surface finishes | 5.8 |
| External walls | 5.8.1, 5.8.2, 5.8.3, 5.8.4 |
| Fire separation for buildings with more than one title | 5.1 |
| FRRs of external walls | 5.3 |
| Small openings and fire resisting glazing | 5.4, Figure 5.1, Table 5.1 |
| Horizontal fire spread from external walls | 5.2 |
| Separation | 5.2.1, 5.2.2, 5.2.3, 5.2.4, 5.2.5, 5.2.6 |
| Analysis required for all external walls | 5.2.7 |
| Notional boundary – firecells on the same property .. | 5.2.8, 5.2.9 |
| Horizontal fire spread from roofs and open-sided buildings .. | 5.6 |
| Open sided buildings | 5.6.6, 5.6.7, Figure 5.5 |
| Parapets for storage | 5.6.2 |
| Roof projections | 5.6.3, 5.6.4, 5.6.5, Figure 5.4 |
| Vertical fire spread | 5.7 |
| Different levels of the same building .. | 5.7.10, 5.7.11, Figure 5.7 |
| External thermal insulation – multi-storey buildings .. | 5.7.17, 5.7.18, Figure 5.8 |
| Roofs | 5.7.1, 5.7.2 |
| External exitways over roofs | 5.7.3 |
| Fire spread from an adjacent lower roof .. | 5.7.6, 5.7.7, 5.7.8, 5.7.9, Figure 5.6 |
| Primary elements | 5.7.4, 5.7.5 |
| Roof storage | 5.7.16 |
| Spandrels and apron projections | 5.7.12, 5.7.13, 5.7.14, 5.7.15, Table 5.4 |
| Control of internal fire and smoke spread | Part 4 |
| Building services plant | 4.18 |
| Air handling systems | 4.18.2 |
| Automatic activation | 4.18.1 |
| Closures in fire and smoke separations | 4.16 |
| Doorset markings | 4.16.5, 4.16.6 |
| Fire door and smoke control door installation | 4.16.4 |
| Fire doors | 4.16.9, Figures 4.14, 4.15, 4.16 |
| Glazing | 4.16.7 |
| Lift landing doors | 4.16.11 |
| Introduction | 4.16.1, 4.16.2, 4.16.3 |
| Protected shaft access panels | 4.16.10, Figure 17 |
| Smoke control doors | 4.16.8, Figures 4.12, 4.13 and 4.14 |

Control of internal fire and smoke spread continued

| | |
|--|--------------------------------|
| Concealed spaces | 4.15 |
| Cavity barriers in walls and floors . 4.15.3, Figures 4.10 and 4.11 | |
| Construction | 4.15.5 |
| Exceptions | 4.15.4 |
| Within firecells | 4.15.2, Figure 4.9 |
| Exitways | see Exitways |
| Firecells | see Firecells |
| Fire stopping | 4.4 |
| Fire stops | 4.4.2, 4.4.3, 4.4.4 |
| Introduction | 4.4.1 |
| Fire dampers | 4.16.12 |
| Fire shutters | 4.16.13, 4.16.14, 4.16.15 |
| Floors | 4.13 |
| Basement floors | 4.13.9 |
| Gantries, walkways and similar structures | 4.13.8 |
| Intermediate floors | 4.13.4, 4.13.5, 4.13.6, 4.13.7 |
| Glazing in fire and smoke separations | 4.2 |
| Fire doors and smoke control doors | 4.2.4, 4.2.5 |
| Interior surface finishes, floor coverings and suspended flexible fabrics | 4.17.1, Table 4.1 |
| Air ducts | 4.17.11 |
| Combustible insulating materials | 4.17.2 |
| Flooring | 4.17.3, 4.17.4, Table 4.2 |
| Wood and wood panel products | 4.17.5 |
| Foamed plastics | 4.17.2 |
| Membrane structures | 4.17.9, 4.17.10 |
| Suspended flexible fabrics | 4.17.8 |
| Intermittent activities | 4.10 |
| Plant, boiler and incinerator rooms | 4.10.3, 4.10.4 Figure 4.5 |
| Solid waste storage | 4.10.2 |
| Support activities | 4.10.1 |
| Long corridor subdivision | 4.12, Figure 4.7 |
| Protected shafts | 4.11, Figure 4.6 |
| Access panels | 4.16.11 |
| Fire separation | 4.11.2, 4.11.3 |
| Lifts, conveyors and services | 4.11.1 |
| Openings | 4.11.4 |
| Solid waste and linen chutes | 4.11.5, 4.11.6 |
| Structural stability during fire | 4.3 |
| Building elements with an FRR | 4.3.1, 4.3.2 |
| Horizontal stability | 4.3.5 |
| Unrated primary elements | 4.3.3, Figure 4.1 |
| Vertical stability | 4.3.4 |
| Subfloor spaces | 4.14, Figure 4.8 |
| Vertical safe path smoke separation | 4.9.7 |

Errata 1
Feb 2013Amend 3
Jul 2014